

GS02 75
GS02 76
GS02 79

UP TO
 AND

1.7 L/MIN
350 BAR

.45 USGPM
5000 PSI



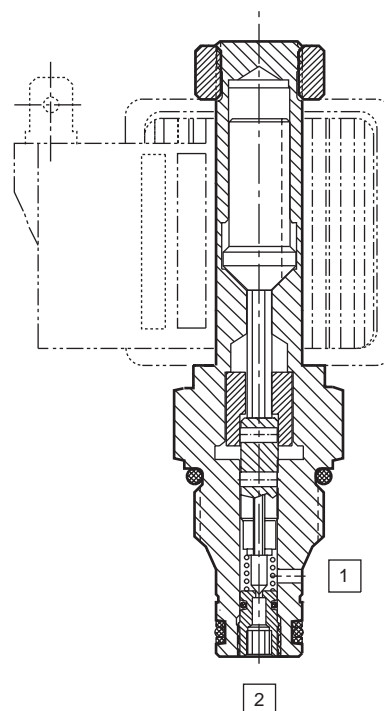
POPPET TYPE

2 Position 2 Way
Normally Open
Direct Acting

- Fast response.
- One piece cartridge housing ensures internal concentricity.
- Coil: Waterproof, hermetically sealed, requires no O'Rings; Interchangeable with 04 and 06 series poppet valves; Symmetrical coil can be reversed without affecting performance.

OPERATION

De-energized the pilot is biased open via a light spring. Flow is allowed in either direction. **Energized** the armature pushes the pilot onto its seat. Side port pressure holds the pilot firmly closed. Pressure above valve rating on the nose will lift the pilot causing relief flow.



PATENT
 #5,002,253

SPECIFICATIONS

BASIC MODEL NUMBER	STANDARD GS02 75	ZERO DROPS GS02 76	HIGH PRESSURE POPPET RELIEF** GS02 79
SYMBOL			
NOMINAL FLOW AT Δp = 5 bar 70 psi	1 l/min 0.26 USgpm		
PRESSURE	210 bar 3000 psi		350 bar 5000 psi
FUNCTION	1→2 CLOSED WHEN SOLENOID IS ENERGIZED		2→1 CLOSED WHEN SOLENOID IS ENERGIZED
RESPONSE TIME AT NOM. FLOW & PRESS. OPEN CLOSE	10 m. sec.		
MAX INTERNAL LEAK AT 210 bar 3000 psi at 38 cSt 180 SSU	0.33 ml/min 5 drops/min	ZERO DROPS SOFT (Delrin) SEAT	0.33 ml/min 5 drops/min
SERIES CC COIL WATTS. (100% DUTY CYCLE)	14w ('S' Coil)		19w ('P' Coil)
MIN AMPERAGE TO OPERATE VALVE AT MAX RATED PRESSURE & FLOW	75% OF NOMINAL AMPERAGE, DETAILS: COIL DATA SHEET page 204		
INSTALLATION	UNRESTRICTED		
FLUID *	MINERAL OIL OR SYNTHETIC FLUID WITH LUBRICANT PROPERTIES		
IDEAL VISCOSITY *	15-50 cSt 80-230 SSU		
SEAL MATERIAL/TEMPERATURE *	NITRILE (Std.) BUNA-N VITON	STEEL SEAT -30°C to +100°C -20°F to +210°F	DELRIN SEAT -30°C to +100°C -20°F to +210°F
FILTRATION *	25 MICRONS (Nom.) OR BETTER		
CART. WEIGHT	0.14 kg 0.31 lb		
COIL WEIGHT	0.20 kg 0.44 lb		

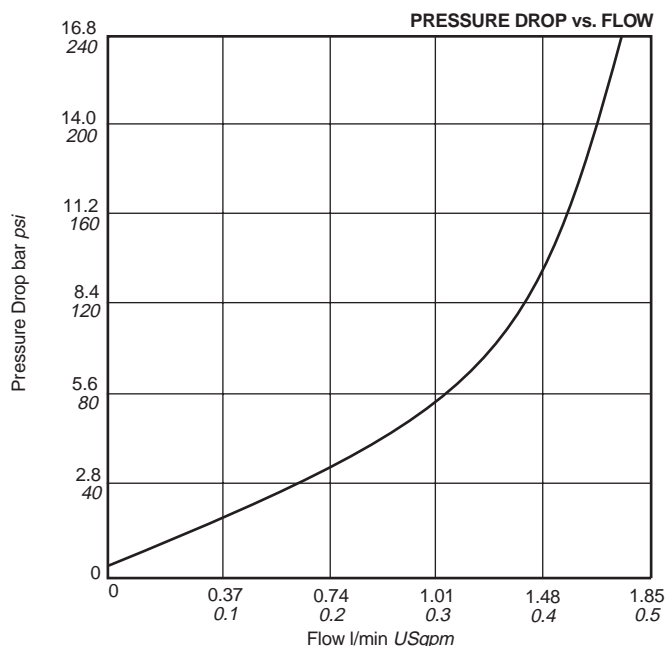
* IMPORTANT: See pages 582-583 for additional notes on operating conditions.

**Minimum poppet relief pressure, 5300 psi.

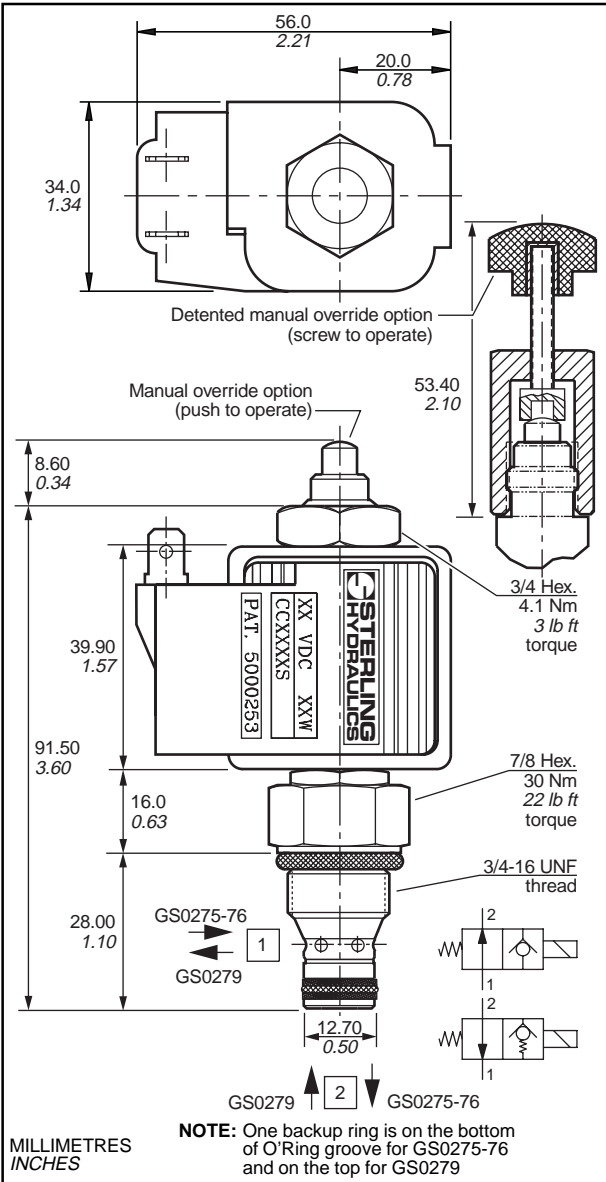
Specifications may change without notice

TYPICAL PERFORMANCE

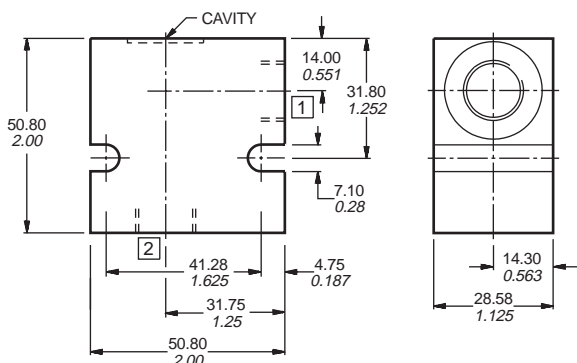
Measured at 30cSt 140 SSU (For cartridge only)



DIMENSIONS



LINE BODY CAVITY CAV02-2: 3/4-16 Thread (8-2 Industry common cavity)



CAVITY TOOLING FOR CAV02-2

	MM	INCH	
PILOT DRILL Ø	11.70	0.46	REAMER (STEEL) 8RM31066S
STEP DRILL	8DS31356		COUNTERBORE
REAMER (ALUM)	8RM31066A		TAP 8TP31202

MACHINING DETAILS PAGE 535

CARTRIDGE

GS02

PRESSURE AND PERFORMANCE FEATURES (Normally Open)	75	STANDARD ('S' Coil)
	76	ZERO DROPS ('S' Coil)
	79	HIGH PRESSURE ('P' Coil)
MANUAL OVERRIDE (Option)	0	NOT REQUIRED
	1	MANUAL OVERRIDE
	2	DETENTED M.O. Part no. 900690
FILTER SCREEN (Option)	0	NOT REQUIRED
	1	60 MESH SCREEN
SEAL MATERIAL	N	NITRILE <i>BUNA-N</i> (Std.)
	V	VITON

COIL

CC

COIL WATTAGE	S P	STANDARD PUISSANT	WATTAGE	
			S	P
COIL VOLTAGE*	012	12V DC	14w	19w
	024	24V DC	16w	19w
	115	115V AC	17w	22w
	230	230V AC		
COIL TERMINAL*	A	AMP JR. (CC Coil Only, DC Only)		
	AD	AMP JR. WITH 3 AMP DIODE (CC Coils only, DC Only)		
	C	DOUBLE LEAD WIRE WITH CONDUIT CONNECTOR (AC Only)		
	D	DIN 43650 (AC or DC, Supplied without DIN Connector)		
	L	DOUBLE LEAD (DC Only)		
	LD	DOUBLE LEAD WITH DEUTSCH CONNECTOR DT04-2P-EP04 (DC Only)		
	LE	DOUBLE LEAD WITH 3 AMP DIODE (DC Only)		
	PF	DOUBLE LEAD WIRE WITH PACKARD FEMALE WEATHER PACK CONNECTOR 1201 5792 (DC Only)		
	PM	DOUBLE LEAD WIRE WITH PACKARD MALE WEATHER PACK CONNECTOR 1201 0973 (DC Only)		
	S	DOUBLE SPADE (DC Only)		
	W	DOUBLE SCREW (DC only)		
WE	DOUBLE SCREW WITH 3 AMP DIODE (DC Only)			
Y	SINGLE SCREW (Internally Grounded, DC Only)			

* ADDITIONAL VOLTAGES AND OTHER TERMINALS ARE AVAILABLE, FOR DETAILS PLEASE CONSULT FACTORY

COIL DETAILS page 204

LINE BODY

LB10

PORTING	503	3/8 SAE
	506	3/8 BSP
LINE BODY MATERIAL	A	ALUMINIUM (Anodised) TO 210 bar 3000 psi
	S	STEEL (Zinc plated) TO 420 bar 6000 psi

LINE BODY DETAILS page 511

SEAL KIT	SK30006N-1 (NITRILE-BUNA N) SK30006V-1 (VITON)
----------	---

**STERLING
HYDRAULICS**