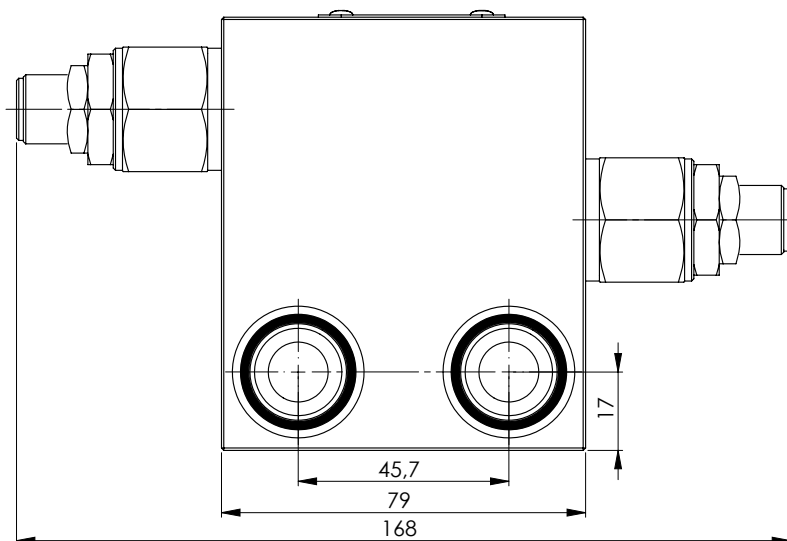
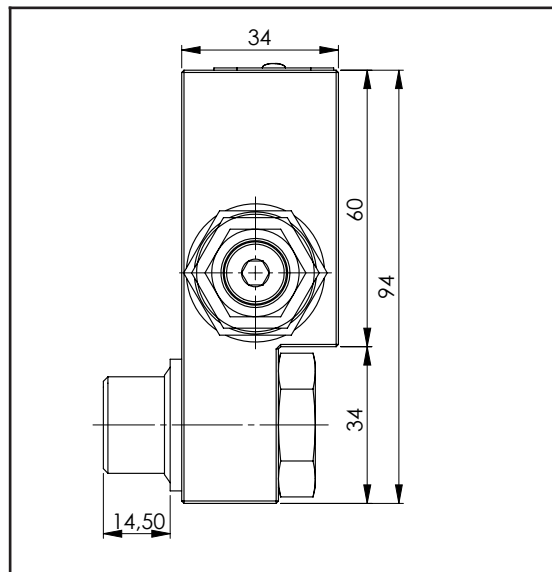
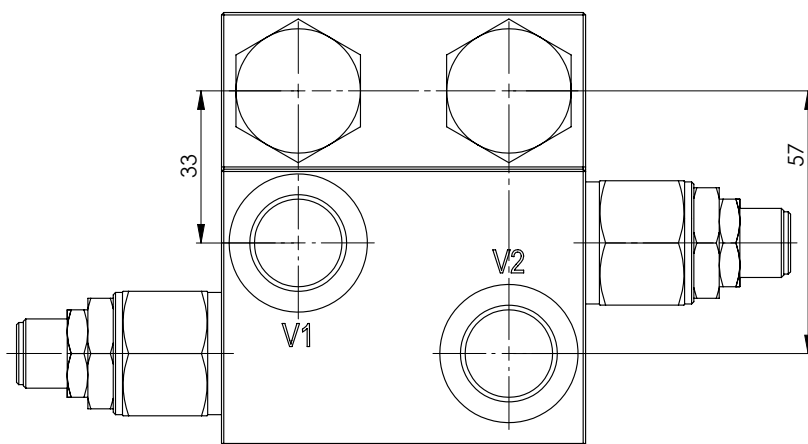
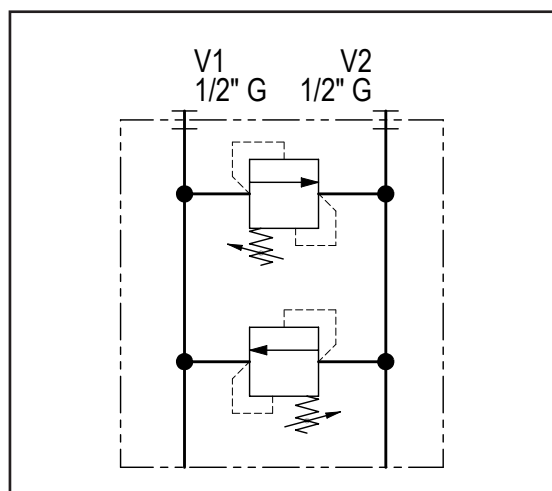
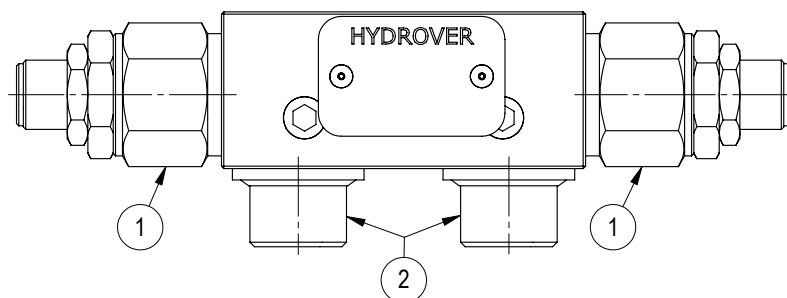


Dimensions in mm

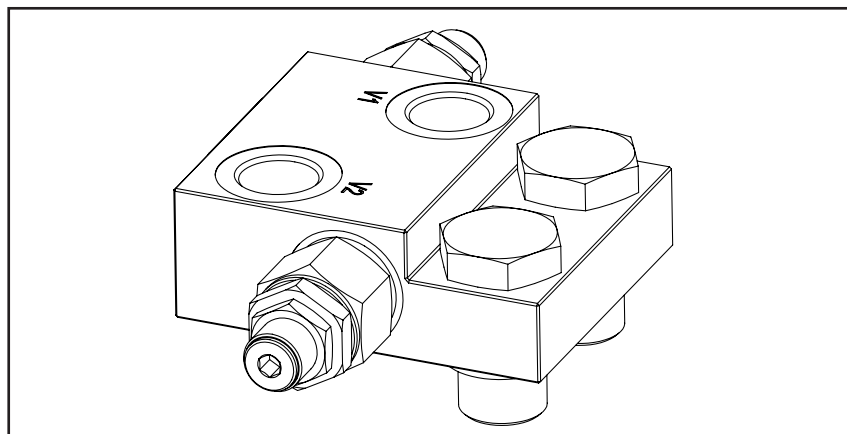


Technical data	
Max. pressure	250 bar
Max. flow	60 lpm
Weight	1 Kg
Manifold material	Aluminium
V1 / V2 ports	1/2" G



N°	Description	Q.ty
1	Bosch Rexroth relief valve VMD1.070 *	2
2	Banjo bolt 1/2" G	2

* for complete technical information, click on the blue link or go to the components section at the end of the catalogue



Ordering code

H	1	4	0	0	4	A	-	-	-	-	-
---	---	---	---	---	---	---	---	---	---	---	---

Hydrover product

Product series

14 series - Valves for hydraulic motors

Product ID

Manifold material

Aluminium

Relief valve adjustment type on V1 *

Screw

= S

Relief valve adjustment pressure range on V1 *

10-60 bar

= 0

40-110 bar

= 1

110-220 bar

= 2

220-260 bar

= 3

Relief valve adjustment pressure range on V2 *

0 = 10-60 bar

1 = 40-110 bar

2 = 110-220 bar

3 = 220-260 bar

Relief valve adjustment type on V2 *

S = Screw

* Omit if not required. To order the product without the pressure relief cartridge valves, omit the pressure range and the adjustment type options: H14004A.

The manifold will still be provided with the corresponding cavities.