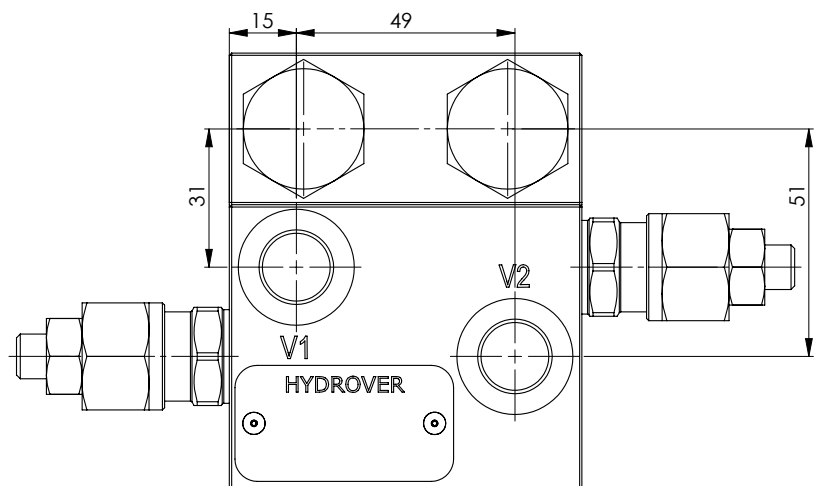
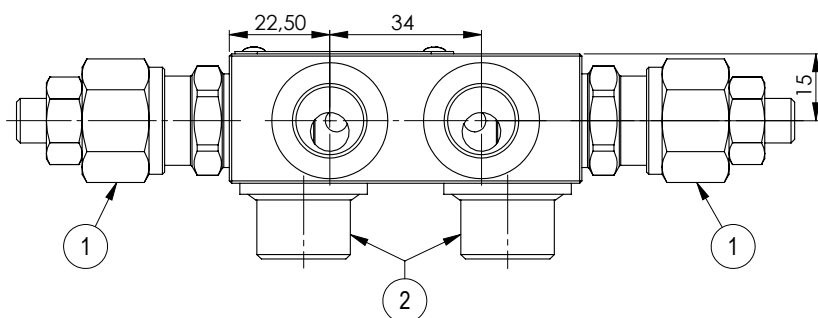
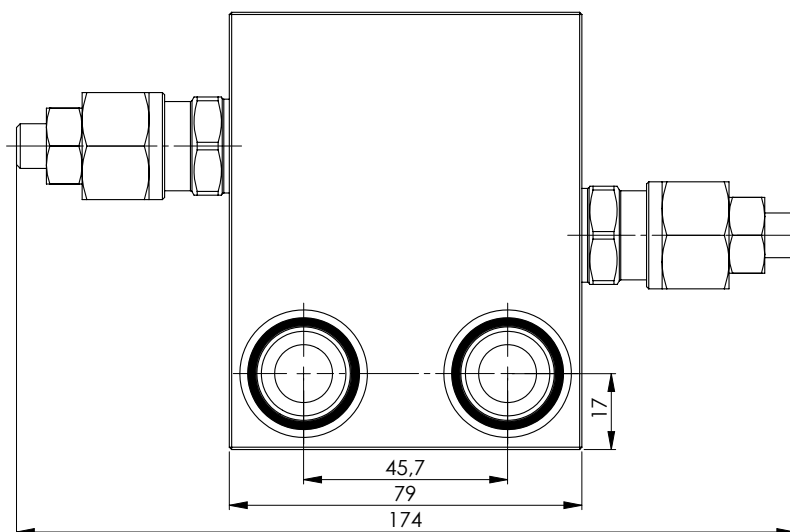
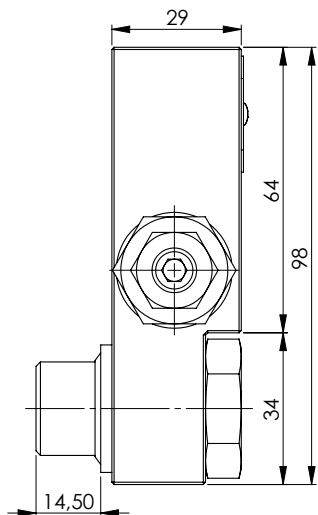
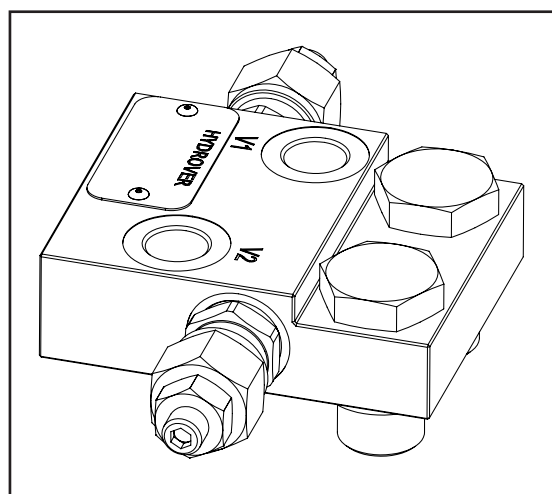


Relief valve double effect for Parker TE motors / 30 lpm **H14005**

Dimensions in mm

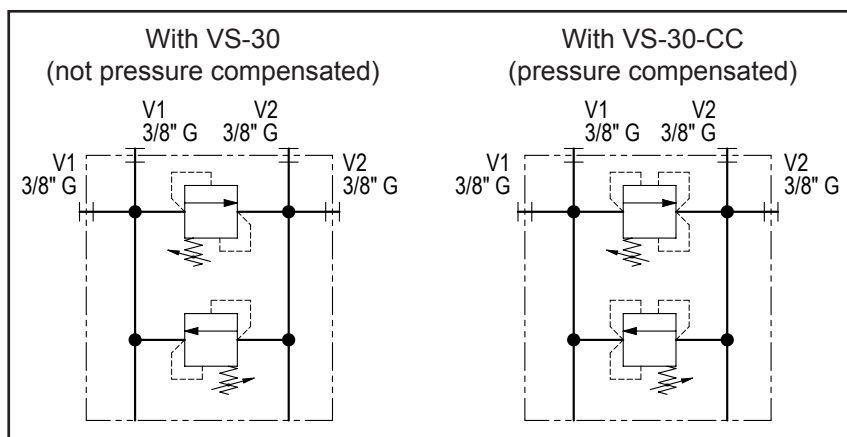


Technical data	
Max. pressure	250 bar
Max. flow	30 lpm
Weight	1 Kg
Manifold material	Aluminium
V1 / V2 ports	3/8" G



N°	Description	Q.ty
1	Bosch Rexroth relief valve VS-30 (as depicted) or Bosch Rexroth sequence valve VS-30-CC *	2
2	Banjo bolt 1/2" G	2

* for complete technical information, click on the blue link or go to the components section at the end of the catalogue



Ordering code

H	1	4	0	0	5	A	-	-	-	-	-	-
---	---	---	---	---	---	---	---	---	---	---	---	---

Hydrover product

Product series

14 series - Valves for hydraulic motors

Product ID

Manifold material

Aluminium

Adjustment type for valve on V1*

Screw = S
Knob (only for VS-30) = K

Pressure range adjustment for valve on V1 *

5-50 bar = 0
30-100 bar = 1
50-210 bar = 2
100-350 bar = 3

V2 valve type *

S = VS-30-CC
M = VS-30

Pressure range adjustment for valve on V2 *

0 = 5-50 bar
1 = 30-100 bar
2 = 50-210 bar
3 = 100-350 bar

Adjustment type for valve on V2*

S = Screw
K = Knob (only for VS-30)

V1 valve type *

S = VS-30-CC
M = VS-30

* Omit if not required. To order the product without valves, omit their options: H14005A.
The manifold will still be provided with the corresponding cavities.