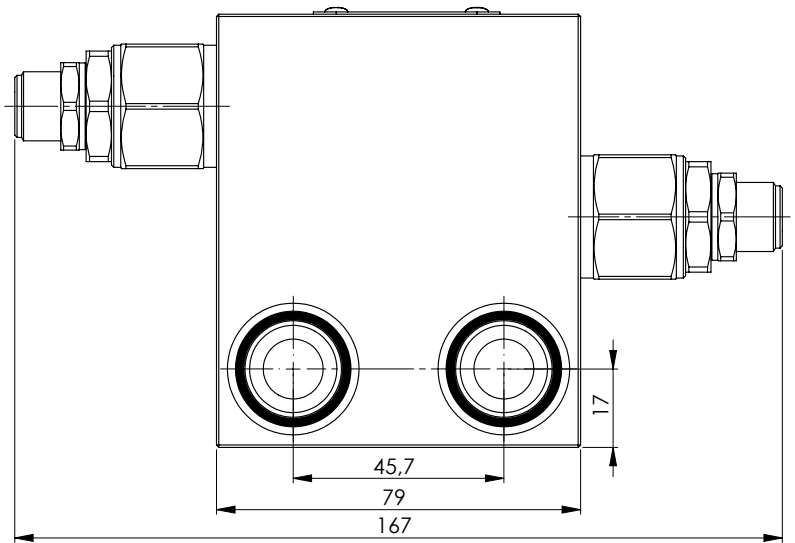
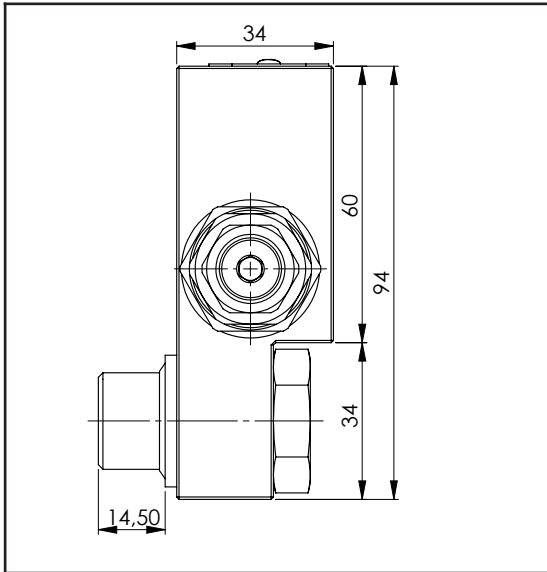
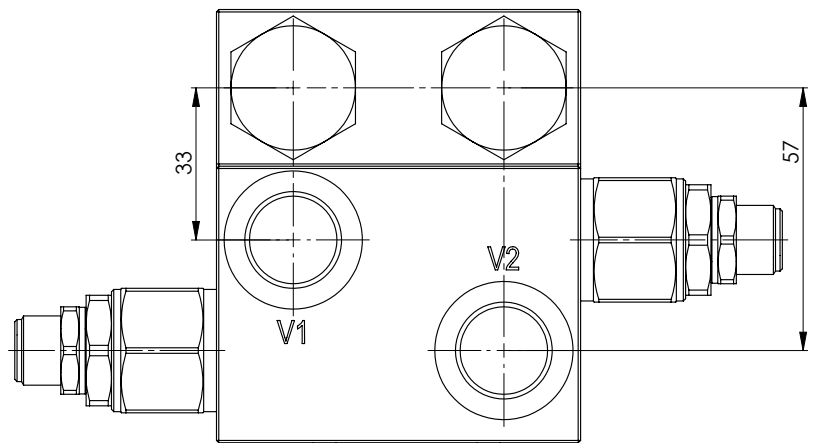
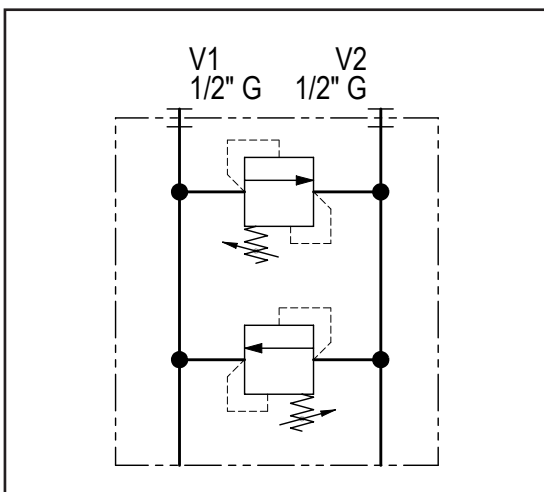
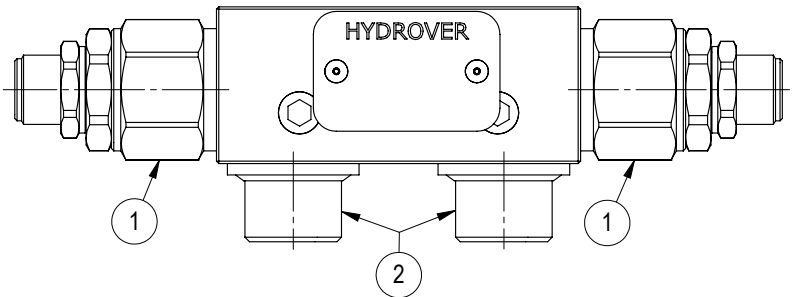


Dimensions in mm

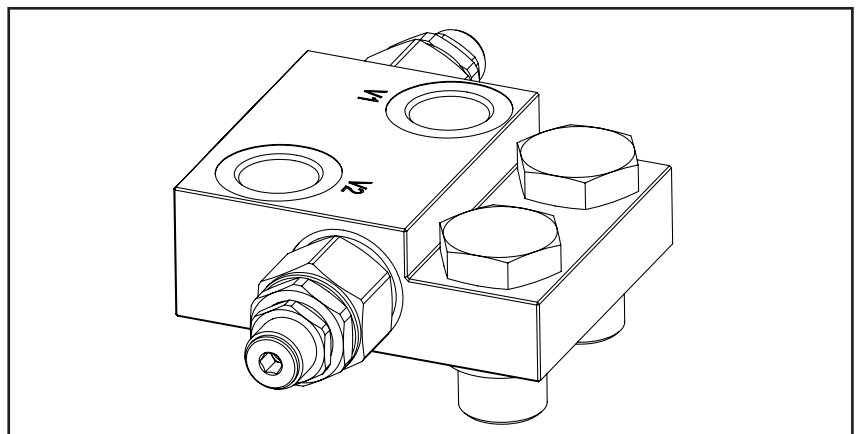


Technical data	
Max. pressure	250 bar
Max. flow	40 lpm
Weight	1 Kg
Manifold material	Aluminium
V1 / V2 ports	1/2" G



N°	Description	Q.ty
1	Bosch Rexroth relief valve <b>VMD1.040</b> *	2
2	Banjo bolt 1/2" G	2

\* for complete technical information, click on the blue link or go to the components section at the end of the catalogue



Ordering code

H	1	4	0	0	6	A	-	-	-	-	-
---	---	---	---	---	---	---	---	---	---	---	---

**Hydrover product**

**Product series**

14 series - Valves for hydraulic motors

**Product ID**

**Manifold material**

Aluminium

**Relief valve adjustment type on V1 \***

Screw

= S

**Relief valve adjustment pressure range on V1 \***

25-120 bar

= 1

40-200 bar

= 2

200-350 bar

= 3

**Relief valve adjustment pressure range on V2 \***

1= 25-120 bar

2= 40-200 bar

3= 200-350 bar

**Relief valve adjustment type on V2 \***

S = Screw

\* Omit if not required. To order the product without the pressure relief cartridge valves, omit the pressure range and the adjustment type options: H14004A.

The manifold will still be provided with the corresponding cavities.