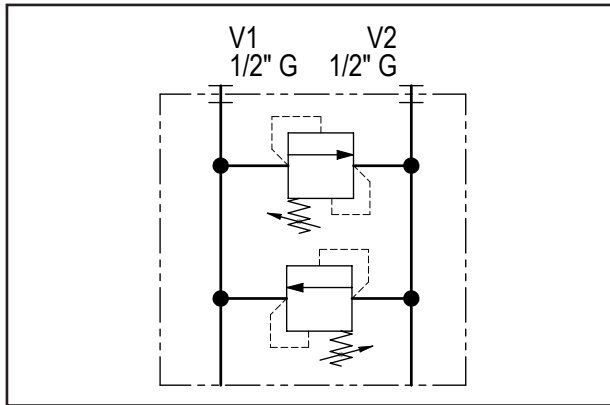
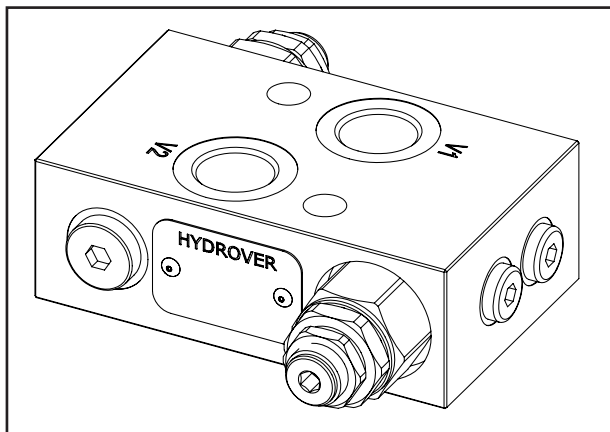


Relief valve double effect for OMS motors / 60 lpm **H14032**

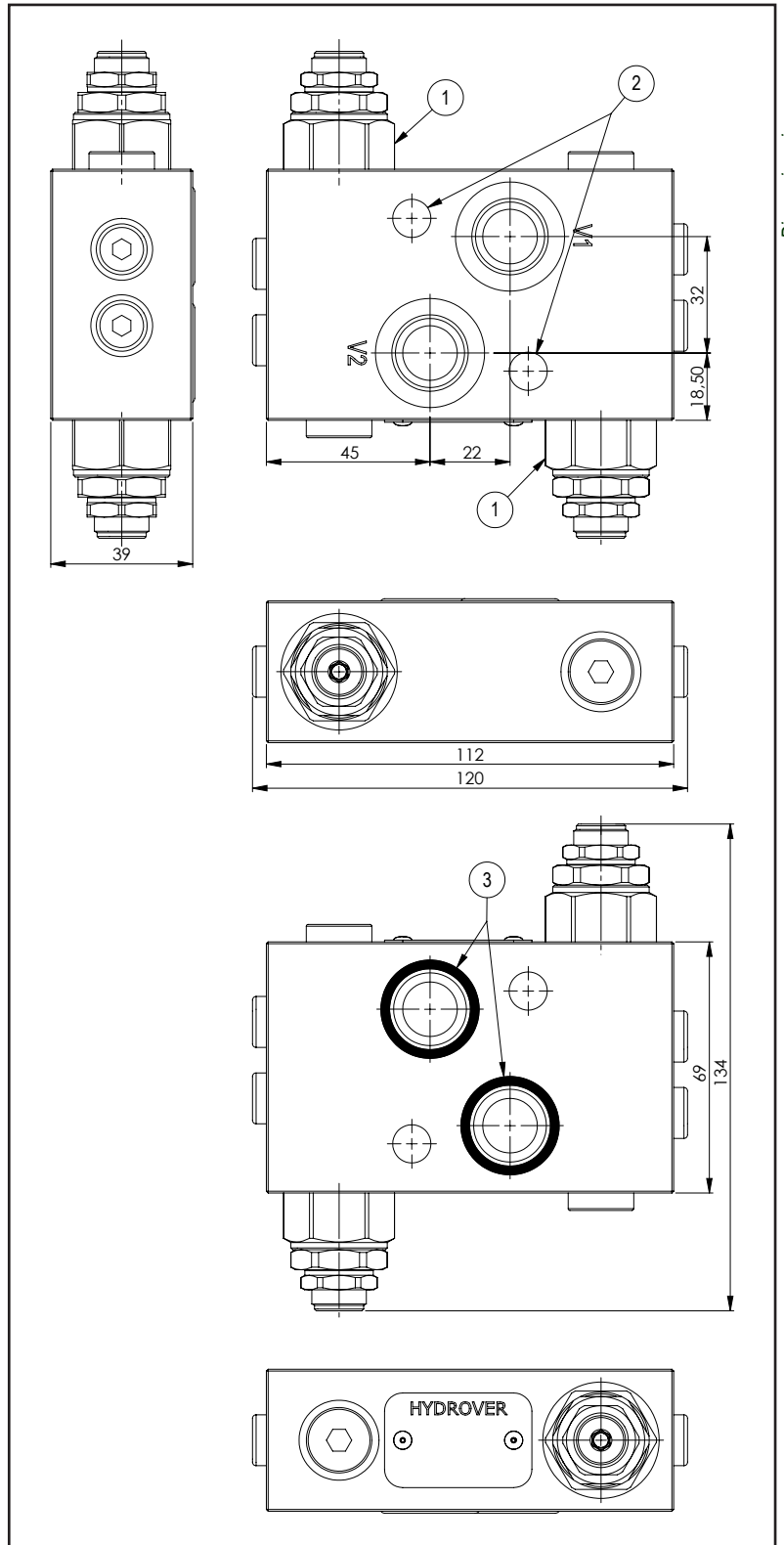


Technical data	
Max. pressure	250 bar
Max. flow	60 lpm
Weight	1 Kg
Manifold material	Aluminium
V1 / V2 ports	1/2" G



N°	Description	Q.ty
1	Bosch Rexroth relief valve <b>VMD1.070</b> *	2
2	Ø 10,5 through hole for mounting	2
3	OR 130 i. Ø 22,22 cross section 2,62	2

\* for complete technical information, click on the blue link or go to the components section at the end of the catalogue



Dimensions in mm

Ordering code

H	1	4	0	3	2	A	-	-	-	-	-
---	---	---	---	---	---	---	---	---	---	---	---

**Hydrover product**

**Product series**

14 series - Valves for hydraulic motors

**Product ID**

**Manifold material**

Aluminium

**Relief valve adjustment type on V1 \***

Screw

= S

**Relief valve adjustment pressure range on V1 \***

10-60 bar

= 0

40-110 bar

= 1

110-220 bar

= 2

220-260 bar

= 3

**Relief valve adjustment pressure range on V2 \***

0 = 10-60 bar

1 = 40-110 bar

2 = 110-220 bar

3 = 220-260 bar

**Relief valve adjustment type on V2 \***

S = Screw

\* Omit if not required. To order the product without the pressure relief cartridge valves, omit the pressure range and the adjustment type options: H14032A.

The manifold will still be provided with the corresponding cavities.