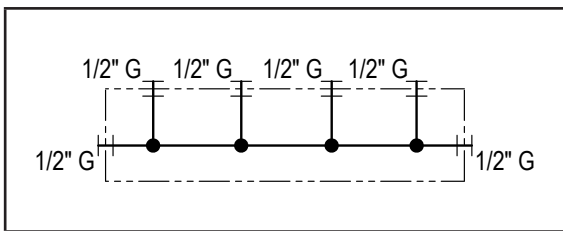
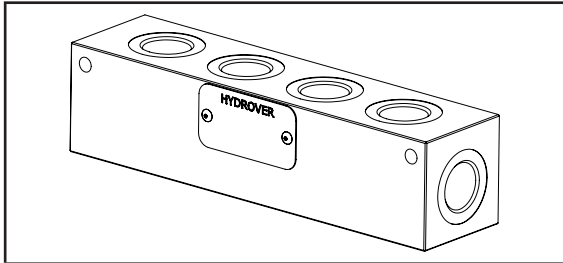
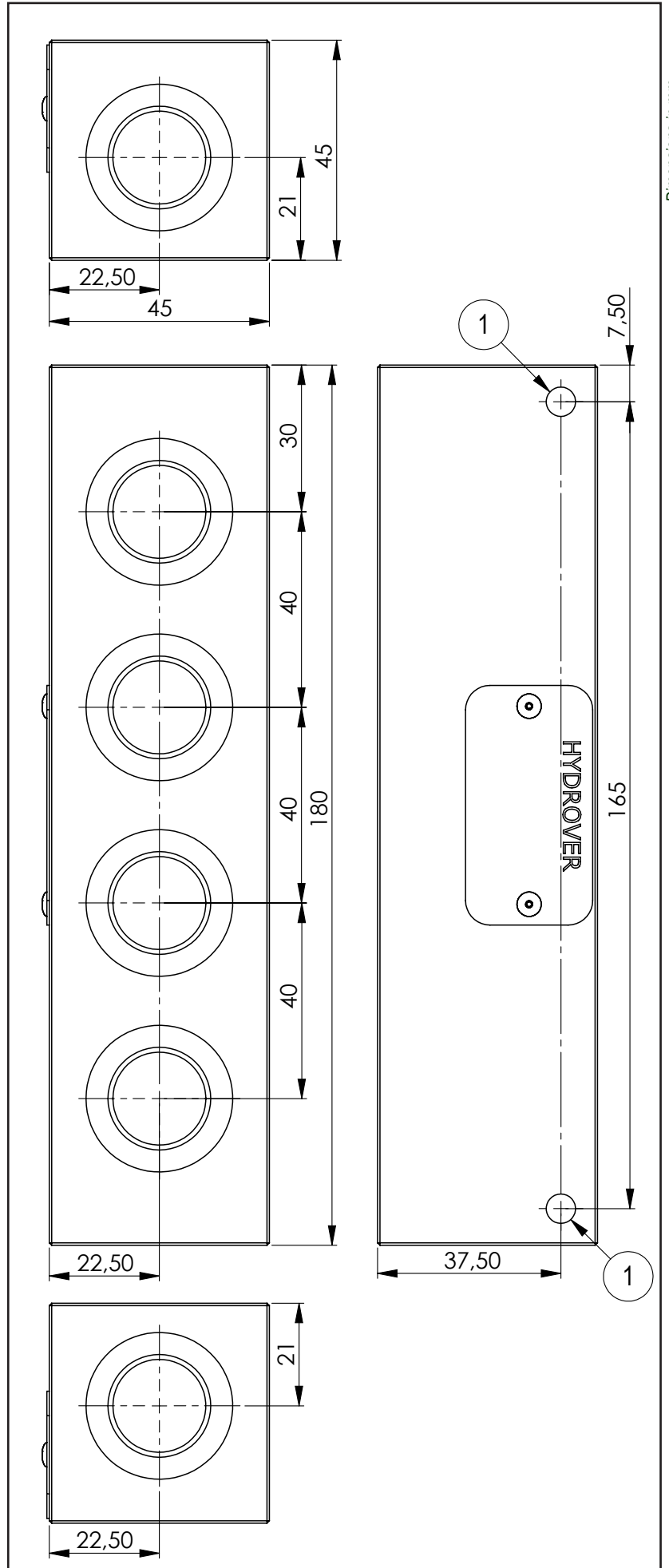


Multi ports manifold / 6 ports 1/2" G **H1611**

Technical data	
Max. pressure	210 bar
Weight	0,85 Kg
Manifold material	Aluminium
Ports	1/2" G



N°	Description	Q.ty
1	Ø 6 through hole for mounting	2



**H1611**

Ordering code

H	1	6	1	1	A
---	---	---	---	---	---

**Hydrover product**

**Product series**

Serie 16 - Manifolds

**Manifold material**

Aluminium

**Product ID**