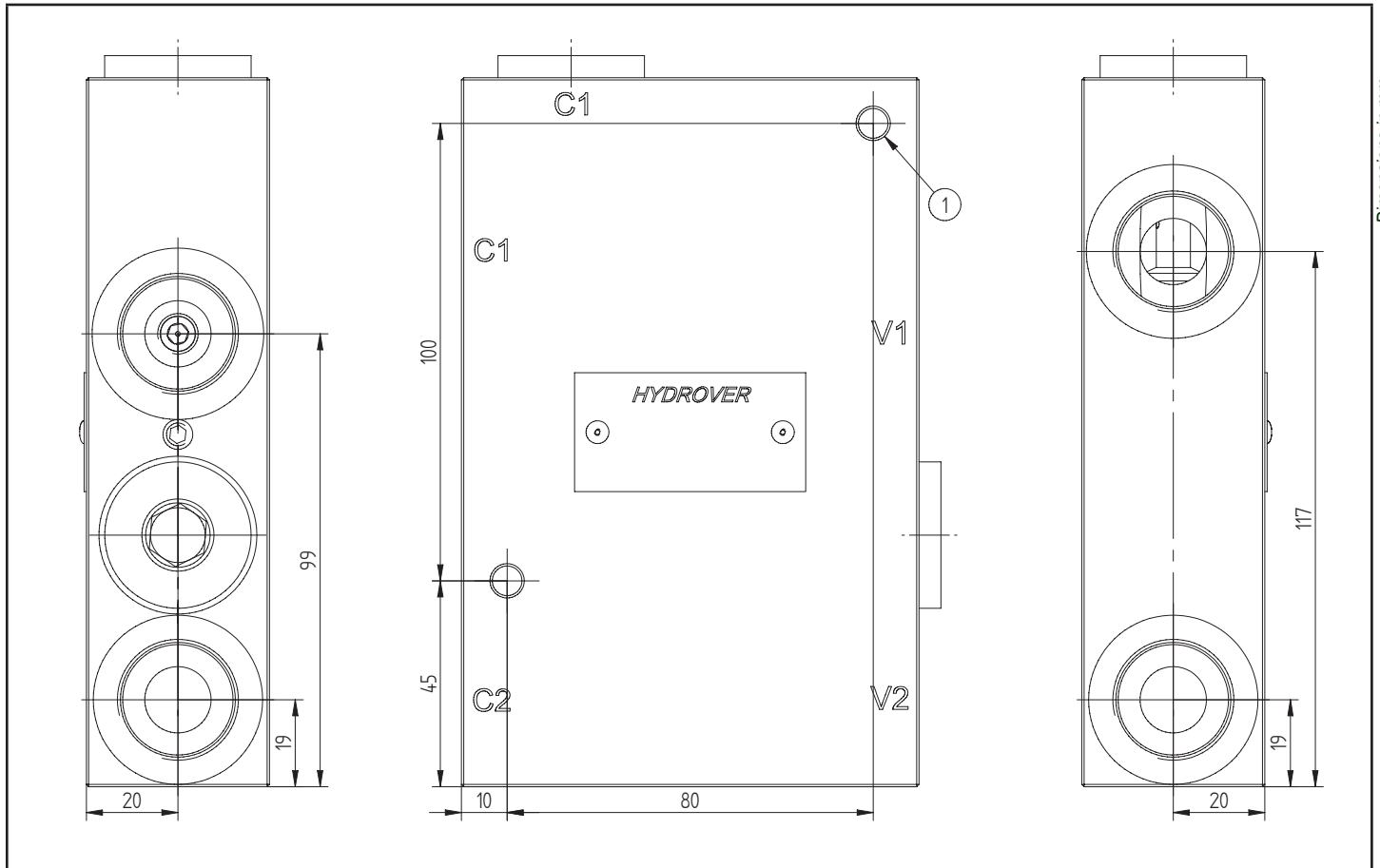


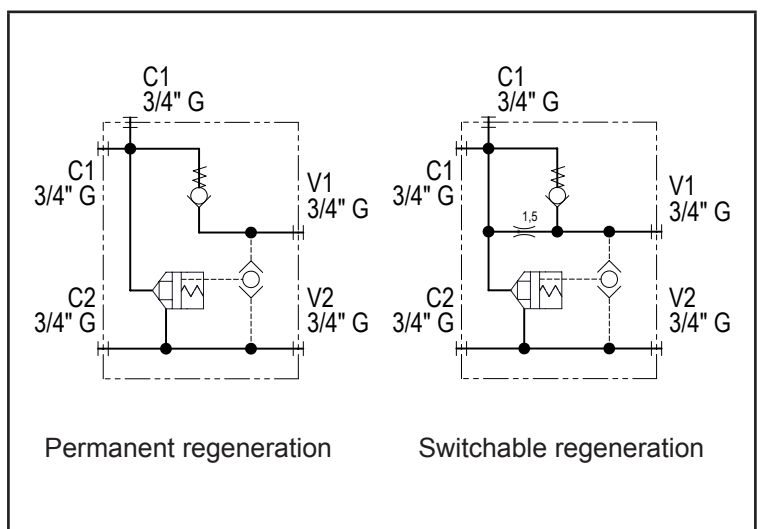
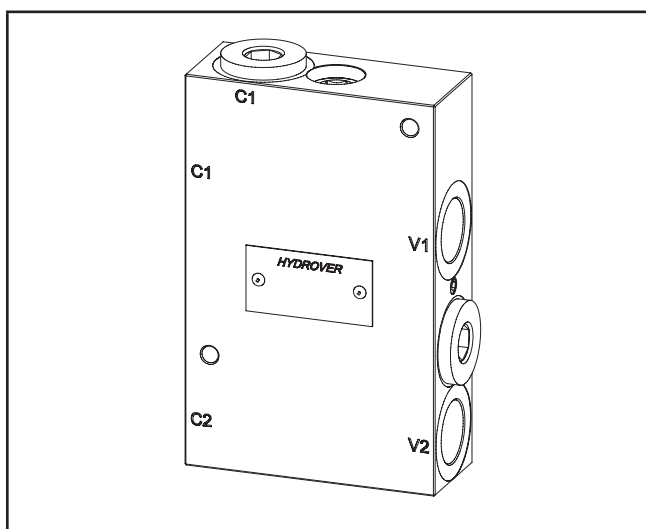
Inline permanent or switchable regenerative control valve 3/4" G **H17009**



Dimensions in mm

Technical data	
Max. pressure	350 bar
Max. flow pump	80 lpm
Max. flow regenerated oil	About 150 lpm
Weight	4,1 Kg
Manifold material	Steel
C1 / C2 / V1 / V2 ports	3/4" G

N°	Description	Q.ty
1	Ø 6,5 through hole for mounting	2



Ordering code

H	1	7	0	0	9	S	-	_	_
---	---	---	---	---	---	---	---	---	---

**Hydrover product**

**Product series**

Serie 17 - Inline valves

**Product ID**

**Manifold material**

Steel

RP =

RE =

**Regeneration type**

Permanent regeneration

Switchable regeneration

**Note:**

The regenerative system increases the speed but reduces the strength of the cylinder, since the oil pressure is only exerted on the rod section.

With the permanent regeneration, if the strength is insufficient, the movement will stop. With the switchable regeneration the orifice leakage will allow the piston rod chamber to relieve the pressure and then the oil pressure will be exercised on the full section of the cylinder.

Before opting for the switchable regeneration, it is recommended to check whether this increase in strength can be sustained by the machine facilities.

**Hydraulic schematic example for log splitter**

