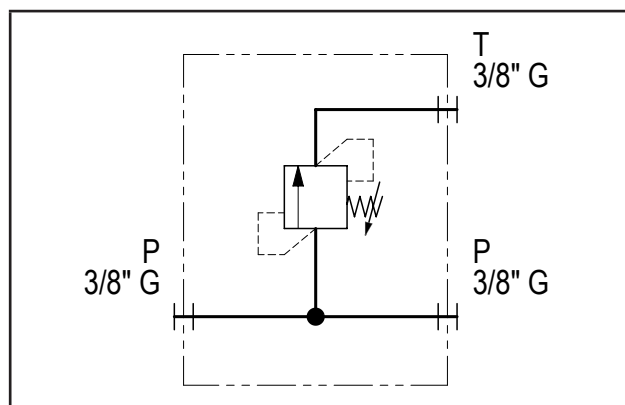
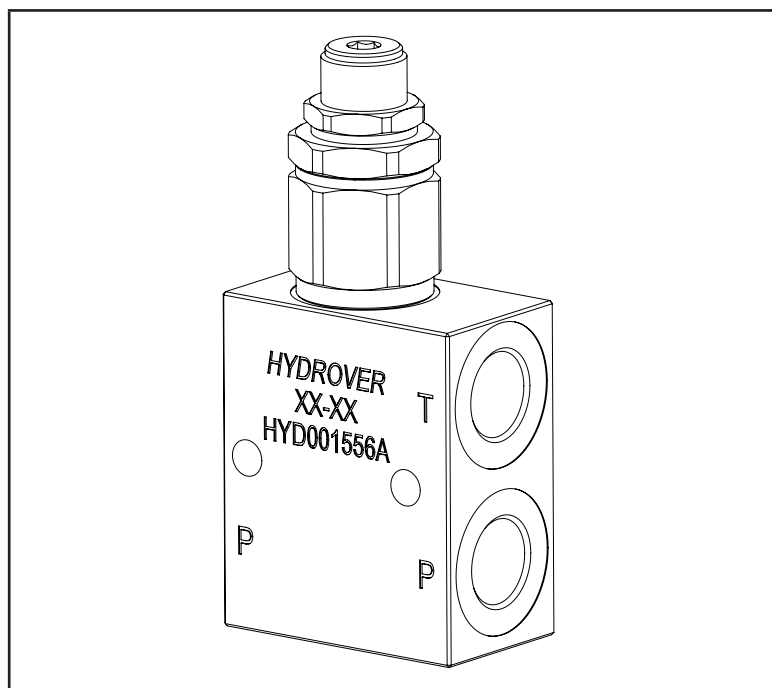


Technical data	
Max. pressure	250 bar
Max. flow	25 lpm *
Weight	0,4 Kg
Manifold material	Aluminium
P / T ports	3/8" G



N°	Description	Q.ty
1	Bosch Rexroth relief valve VMD1.025 *	1
2	Ø 6,5 through hole for mounting	2

* for complete technical information, click on the blue link or go to the components section at the end of the catalogue

Ordering code

H	1	7	0	5	3	A	-	_	_
---	---	---	---	---	---	---	---	---	---

Hydrover product

Product series

17 series - Inline valves

Product ID

Manifold material

Aluminium

Relief valve pressure range *

25-120 bar

40-200 bar

200-350 bar

Relief valve adjustment type *

Screw

1 =

2 =

3 =

S =

* Omit if not required. To order the product without the pressure relief cartridge valve, omit the pressure range and the adjustment type options: H17053A.
The manifold will still be provided with the corresponding cavity.