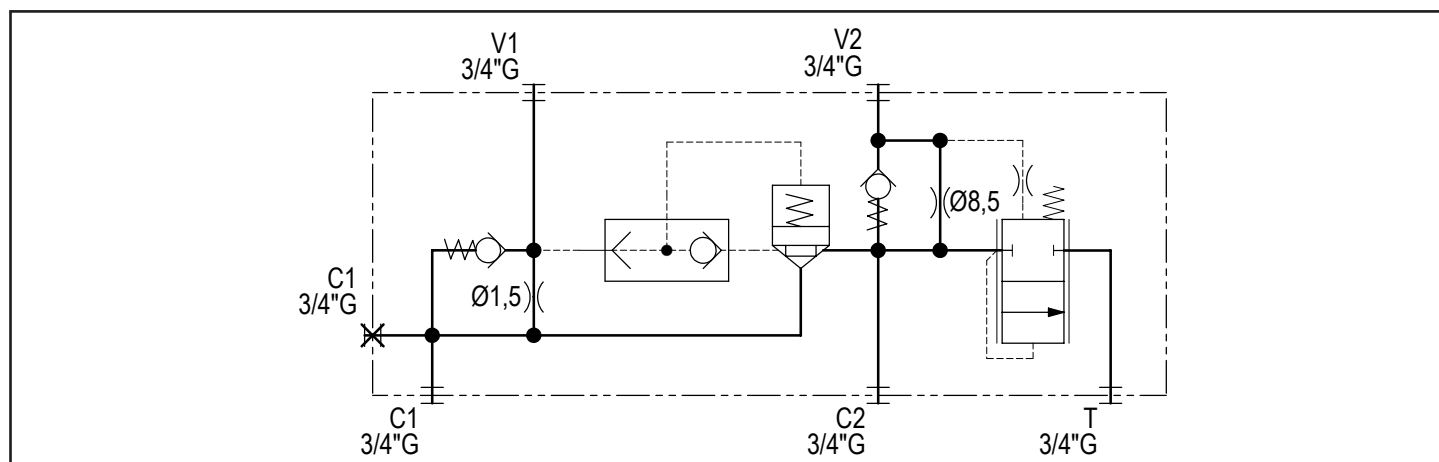


Technical data	
Max. pressure	350 bar
Max. flow input - regenerated	80 lpm - 150 lpm
Max. flow output	170 lpm
Weight	6 Kg
Manifold material	Steel
C1 / C2 / V1 / V2 / T ports	3/4" G

N°	Description	Q.ty
1	Ø 8,5 through hole for mounting	2
2	Pressure compensator	1
3	Bosch Rexroth check valve VUM1.060	1
4	Bosch Rexroth check valve VUB1-12	1



Ordering code

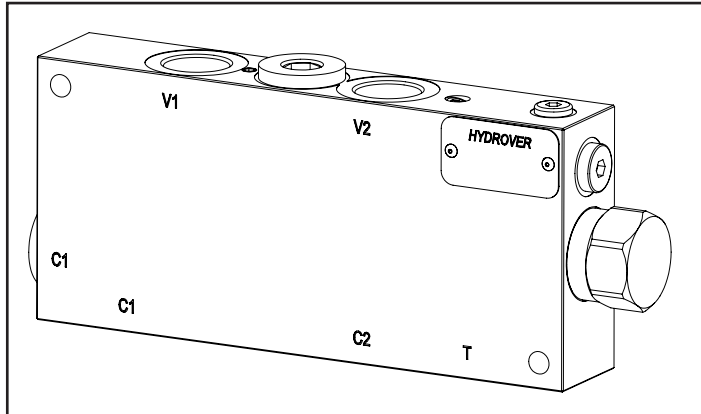
H	1	7	0	6	2	S
---	---	---	---	---	---	---

Hydrover product

Manifold material
Steel

Product series
17 series - Inline valves

Product ID



Note:

From the cylinder cap the output flow is major than the input.

For example if the input is 80 lpm and the area cylinder ratio is 1:2, the output flow will be 160 lpm.

The quick unloading function from the H17062S allows you to dispose of 90 lpm in addition to those unloaded by the directional valve, for a maximum total flow rate of 170 lpm.

Hydraulic scheme example for log splitter

