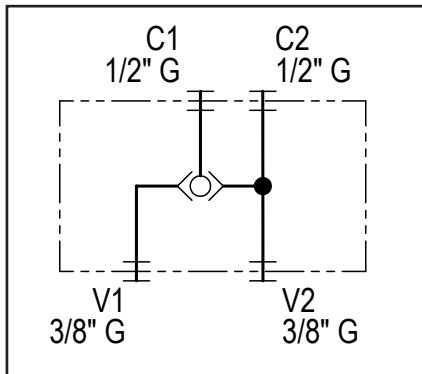
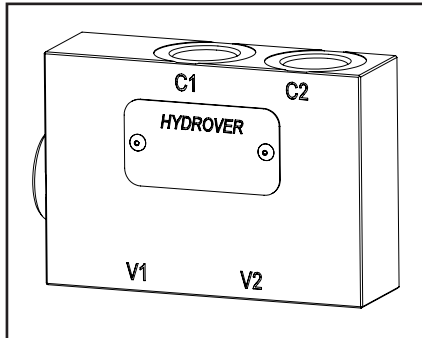
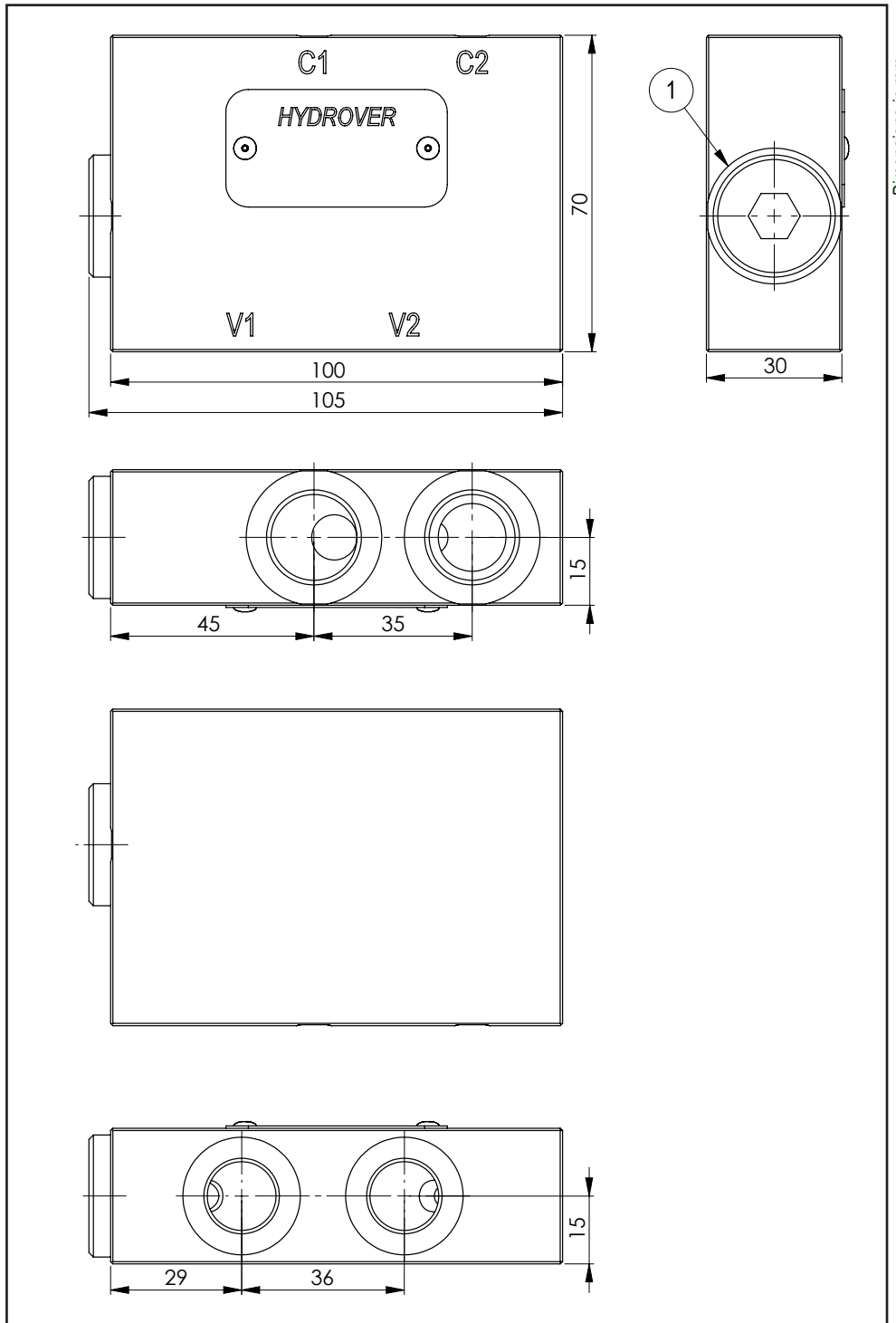


Technical data	
Max. pressure	350 bar
Max. flow input	25 lpm
Max. flow regenerated	50 lpm
Weight	1,4 Kg
Manifold material	Steel
V1 / V2 / T ports	3/8" G
C1 / C2 / T ports	1/2" G



N°	Description	Q.ty
1	Shuttle valve under 1/2" G plug	1



Ordering code

H	1	7	0	7	3	S
---	---	---	---	---	---	---

Hydrover product

Manifold material
Steel

Product series
Serie 17 - Inline valves

Product ID

Hydraulic schematic example for pull horizontal log splitter

← Regenerative (high speed)

