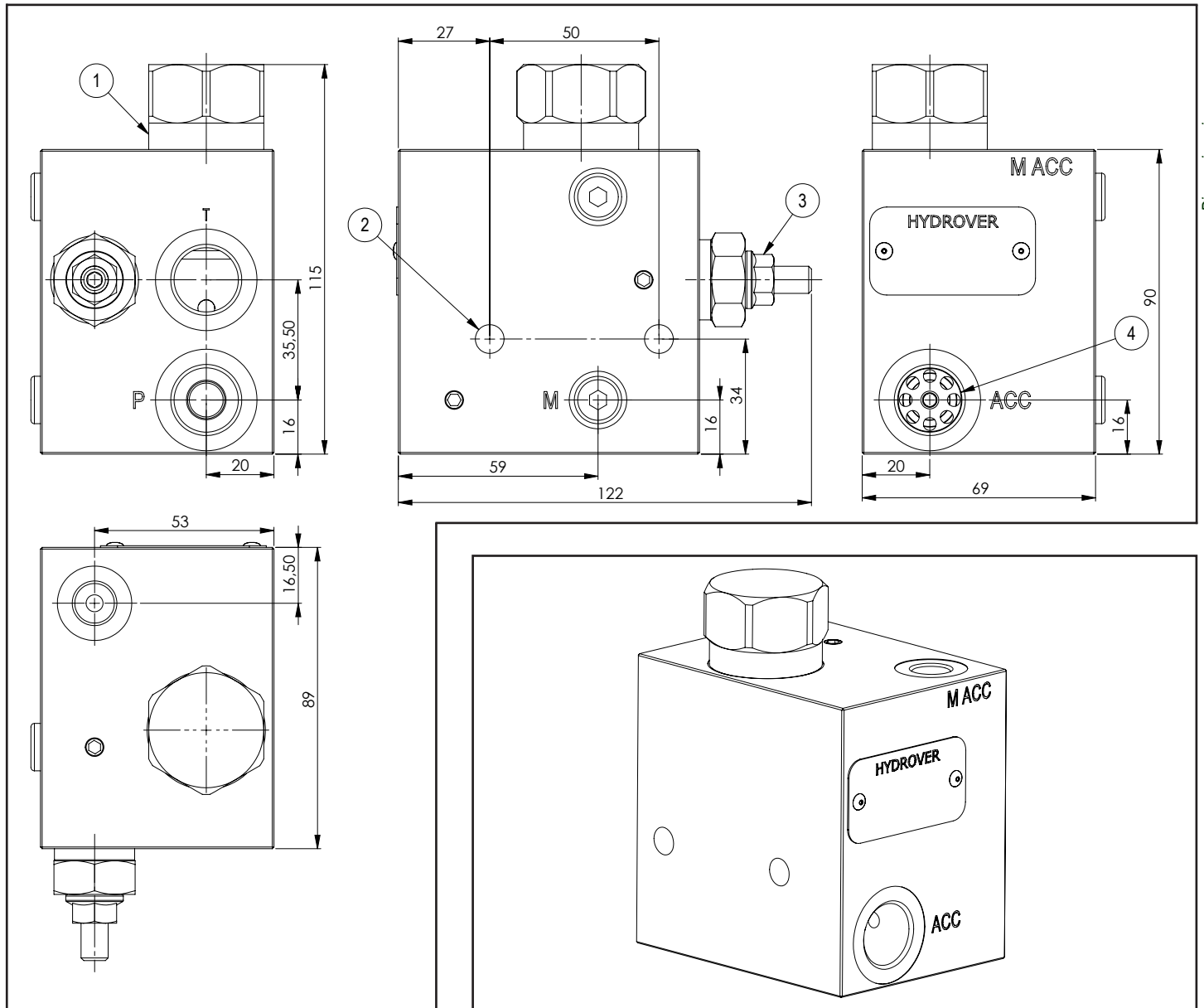
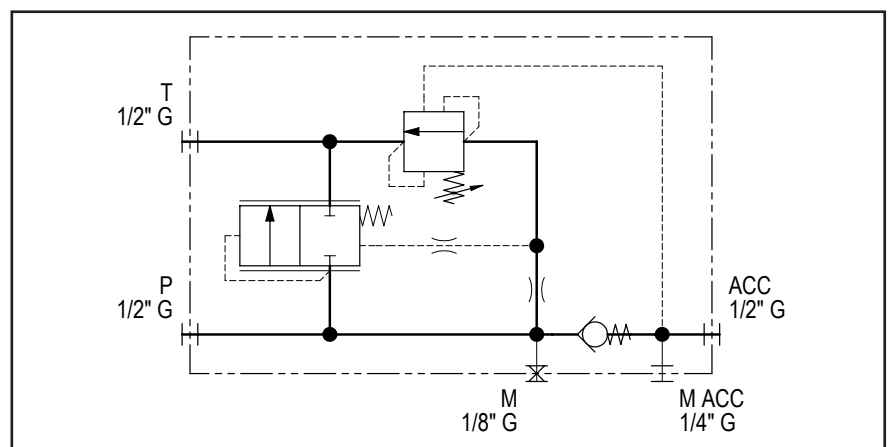


Unloading inline valve for accumulator **H17093**



Dimensions in mm

Technical data	
Max. pressure	250 bar
Max. flow	60 lpm
Weight	1,9 Kg
Manifold material	Aluminium
M port	1/8" G
M ACC port	1/4" G
P / T / ACC ports	1/2" G



N°	Description	Q.ty
1	Logic element	1
2	Ø 8,5 through hole for mounting	2
3	Bosch Rexroth priority unloading pilot operated valve VMSN-08A *	1
4	Check valve	1

* for complete technical information, click on the blue link or go to the components section at the end of the catalogue

Ordering code

H	1	7	0	9	3	A	-	-	-	-
---	---	---	---	---	---	---	---	---	---	---

Hydrover product

Product series

17 series - Inline valves

Product ID

Manifold material

Aluminium

Priority unloading valve adjustment type

Screw

= S

Differential unload / reload unloading valve setting re-seat

6 = 66 ± 2,5%
8 = 80 ± 2,5%

Priority unloading valve pressure range *

03 * = 20-40 bar
05 * = 35-70 bar
10 * = 70-140 bar
20 = 105-210 bar
35 = 175-350 bar

* Only with 6 differential unload / reload