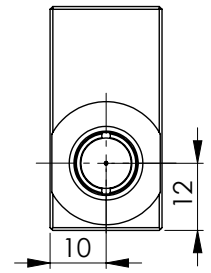
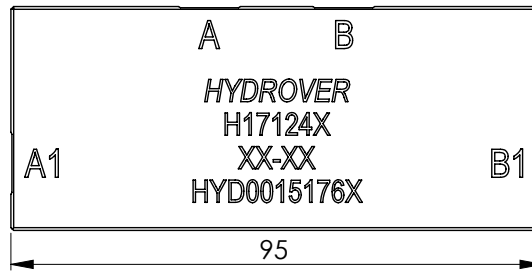
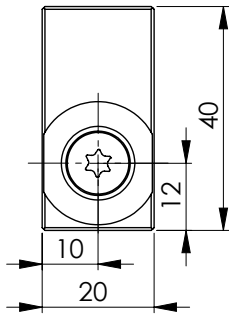
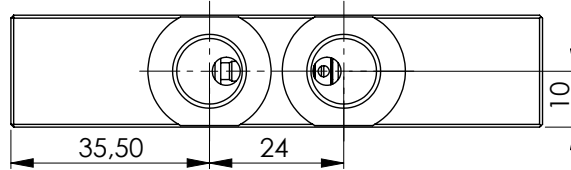


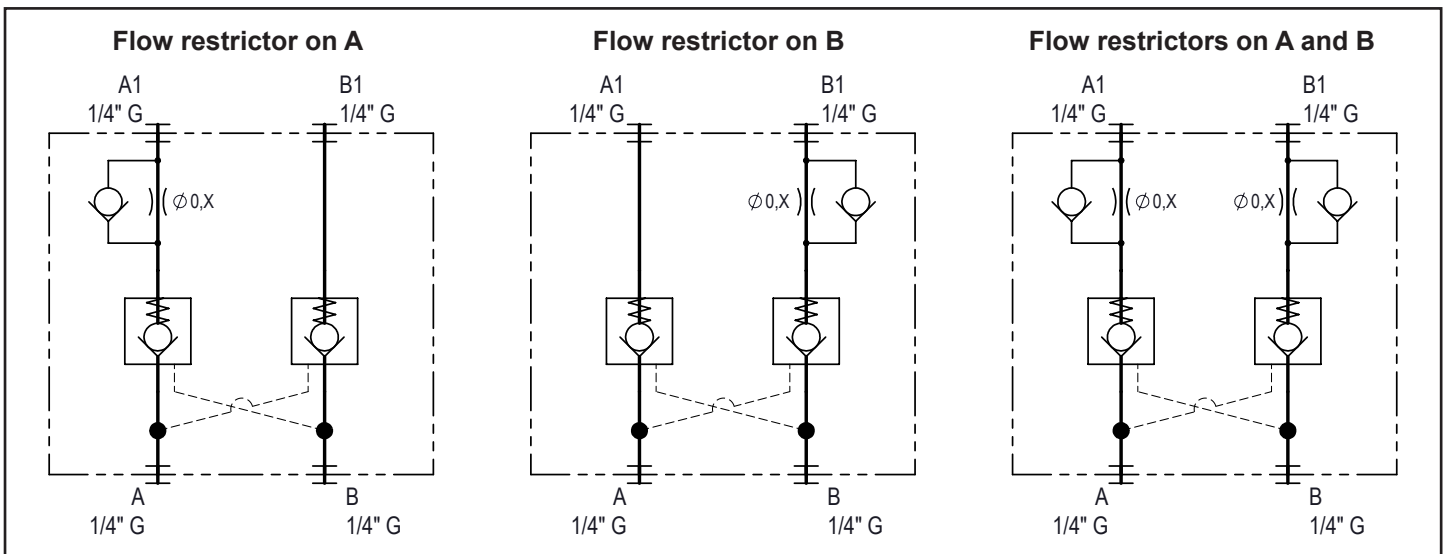
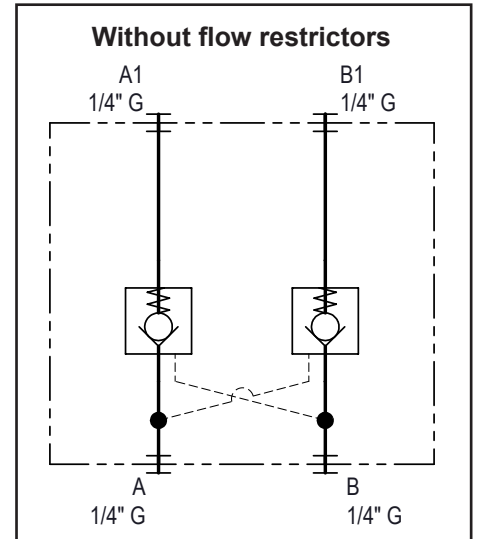
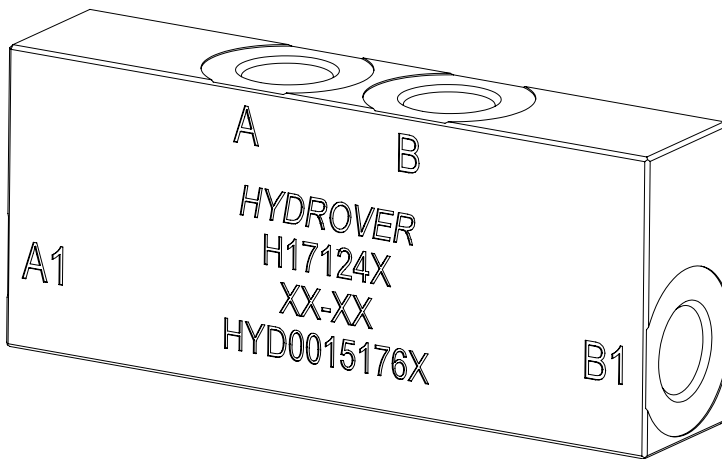
Inline double pilot operated check valve in stainless steel 1/4" G **H17124**



Dimensions in mm



Technical data	
Max. pressure	350 bar
Max. flow	20 lt/1
Weight	0,7 Kg
Manifold material	Stainless steel 316L
All ports	1/4" G



Ordering code

H	1	7	1	2	4	X	-	-	-	-
---	---	---	---	---	---	---	---	---	---	---

Hydrover product

Product series

17 series - Inline valves

Product ID

Manifold material

Stainless steel 316L

Flow restrictor on B

00 =	Without
NF	With flow restrictor to drill
03 =	0,3 mm
04 =	0,4 mm
05 =	0,5 mm
06 =	0,6 mm
07 =	0,7 mm

Flow restrictor on A

00 =	Without
NF	With flow restrictor to drill
03 =	0,3 mm
04 =	0,4 mm
05 =	0,5 mm
06 =	0,6 mm
07 =	0,7 mm