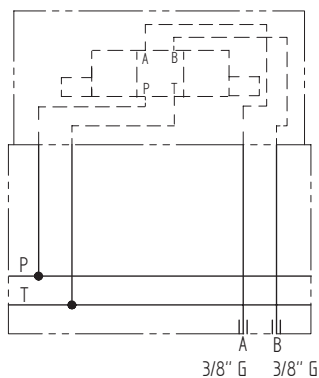
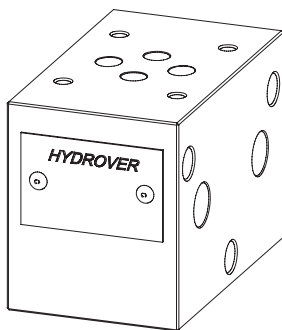


Dimensions in mm

Technical data

| | |
|-------------------|----------|
| Max. pressure | 250 bar |
| Weight | 0,6 Kg |
| Manifold material | Aluminum |
| A / B ports | 3/8" G |



| N° | Description | Q.ty |
|----|--|------|
| 1 | OR 2062 i. Ø 15,60 cross section 1,78 (P-T) | 2 |
| 2 | Ø 11,5 through hole with 1/4" G thread (P-T) | 2 |
| 3 | Ø 8,5 through hole for tie rod | 3 |

Ordering code

| | | | | | |
|---|---|---|---|---|---|
| H | 3 | 1 | 0 | 5 | A |
|---|---|---|---|---|---|

Hydrover product**Product series**

31 series - Modular Cetop 3 subplates for parallel circuits

Manifold material

Aluminum

Product ID