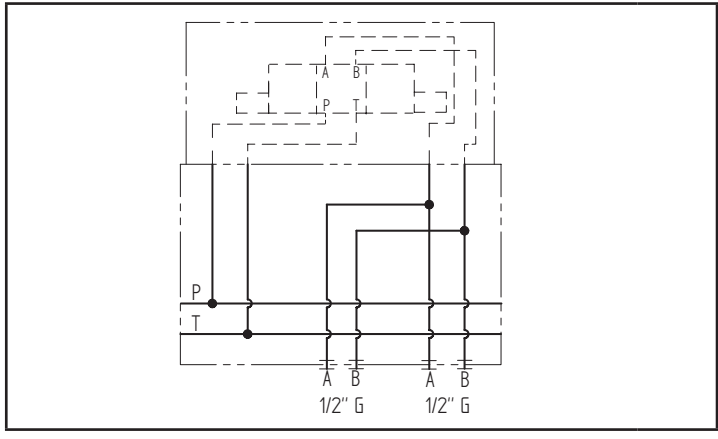
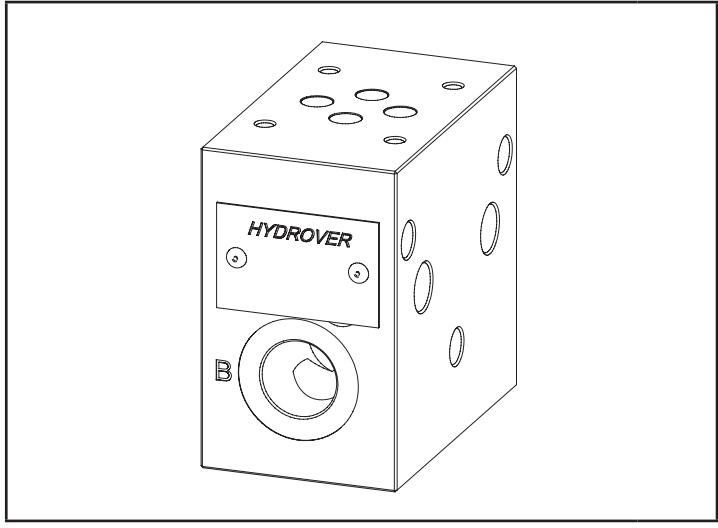
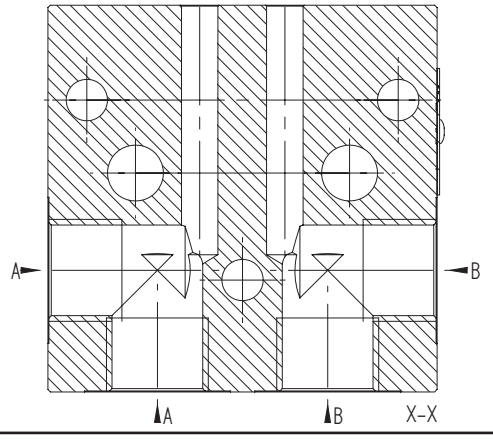
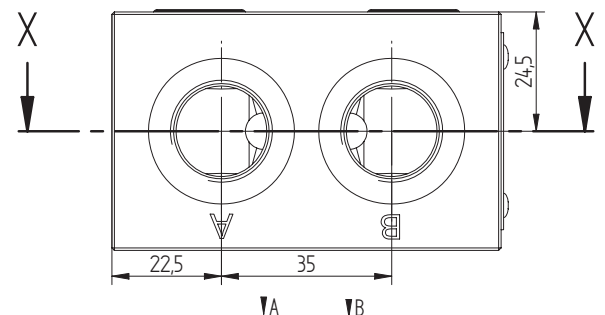
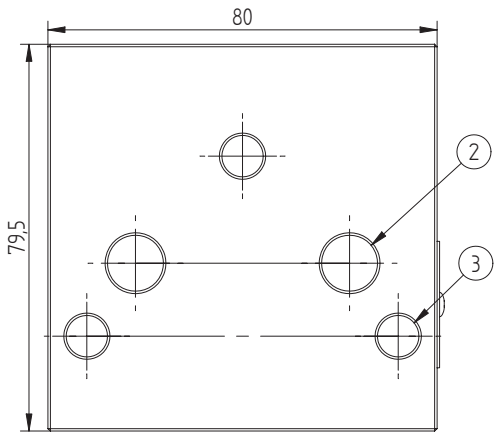
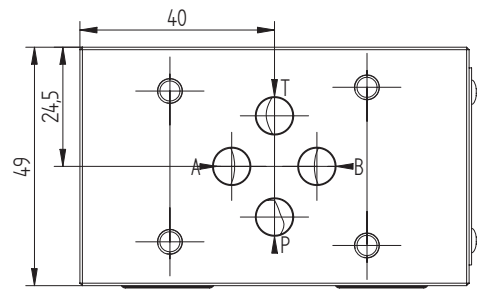
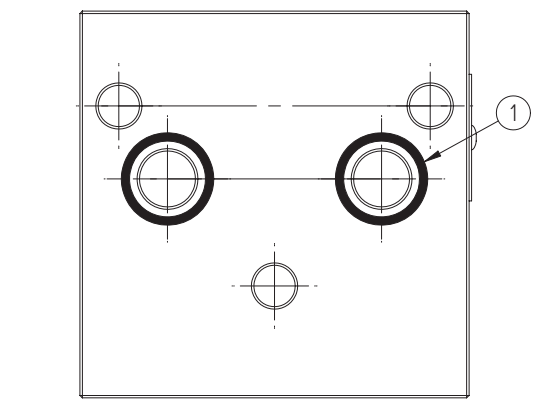


Technical data	
Max. pressure	250 bar
Weight	0,8 Kg
Manifold material	Aluminum
A / B ports	1/2" G



N°	Description	Q.ty
1	OR 2062 i. Ø 15,60 cross section 1,78 (P-T)	2
2	Ø 11,5 through hole (P-T)	2
3	Ø 8,5 through hole for tie rod	3



Dimensions in mm

**H3108**

Ordering code

H	3	1	0	8	A
---	---	---	---	---	---

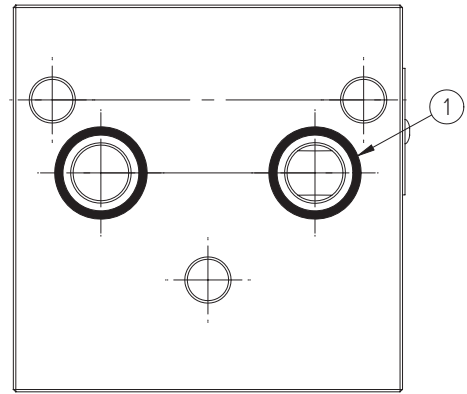
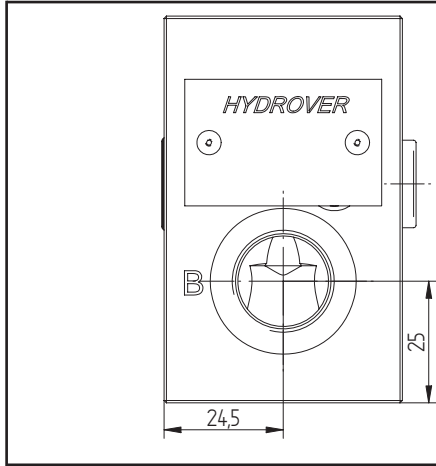
**Hydrover product**

**Product series**

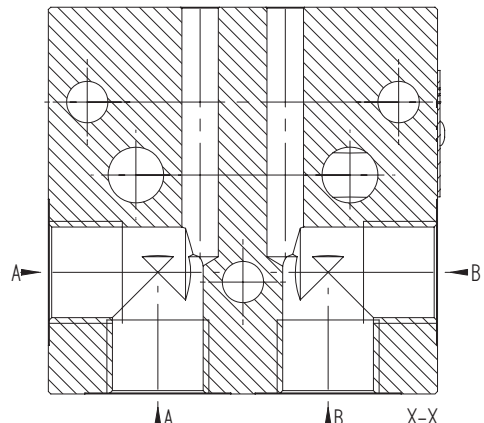
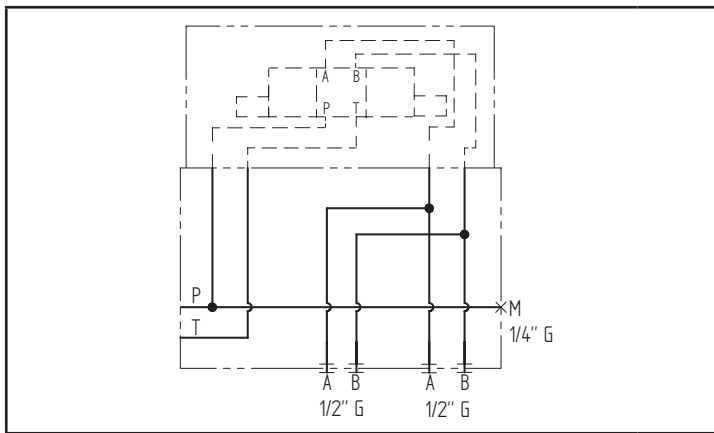
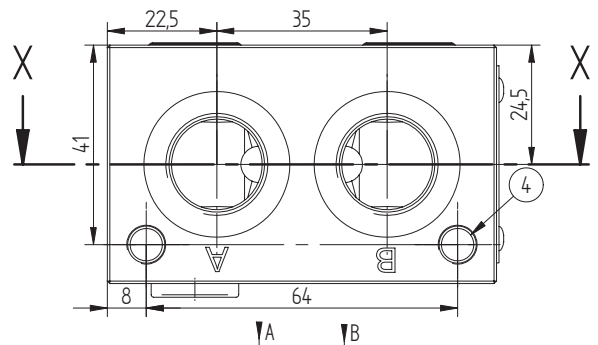
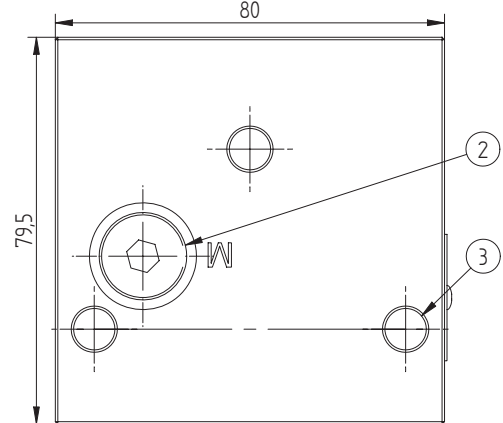
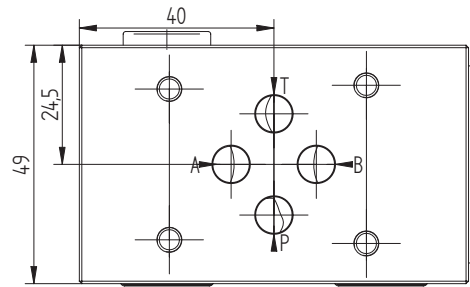
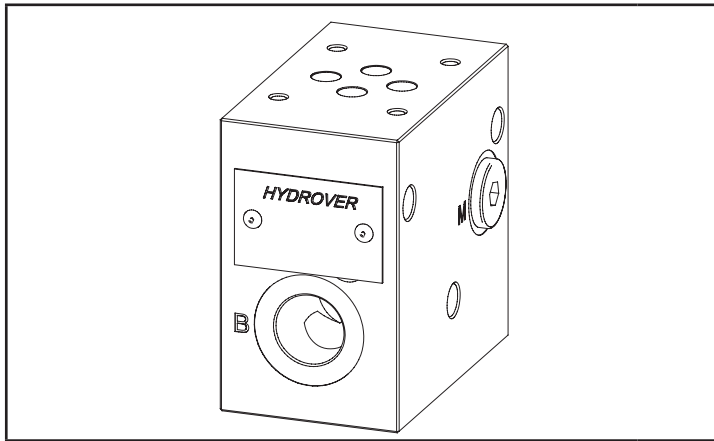
31 series - Modular Cetop 3 subplates for parallel circuits

**Manifold material**  
Aluminum

**Product ID**



Technical data	
Max. pressure	250 bar
Weight	0,8 Kg
Manifold material	Aluminum
M port	1/4" G
A / B ports	1/2" G



N°	Description	Q.ty
1	OR 2062 i. Ø 15,60 cross section 1,78 (P-T)	2
2	1/4" G plug with gasket (M)	1
3	Ø 8,5 through hole for tie rod	3
4	M8x15 thread for mounting	2

Dimensions in mm