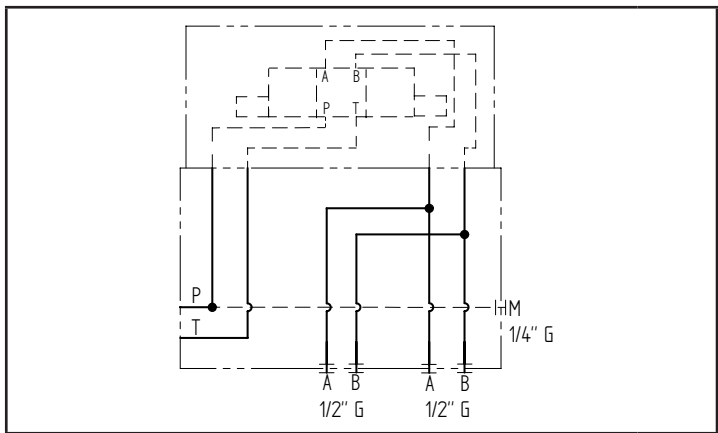
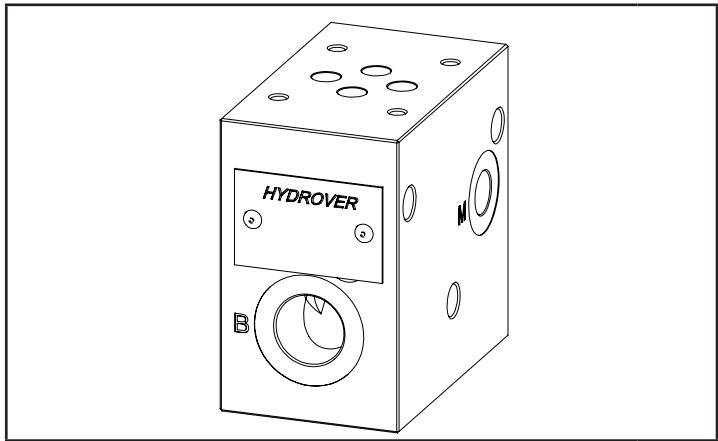
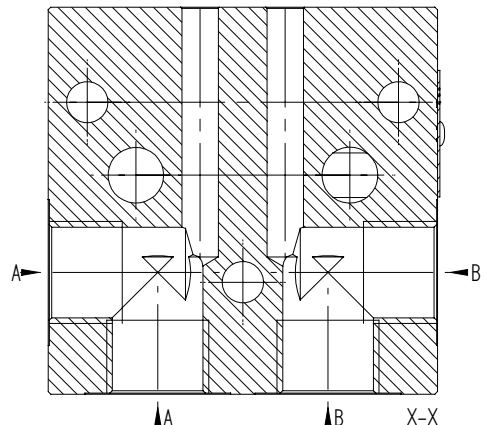
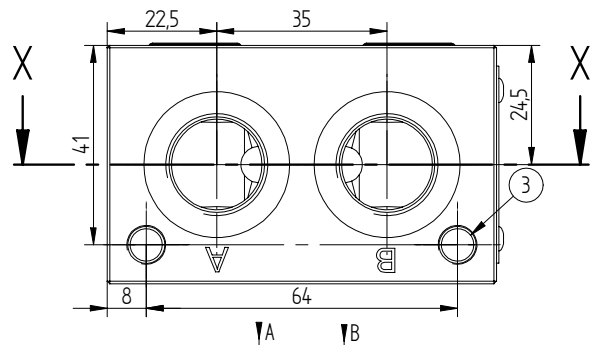
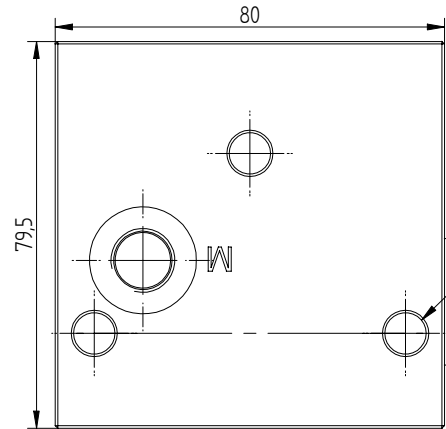
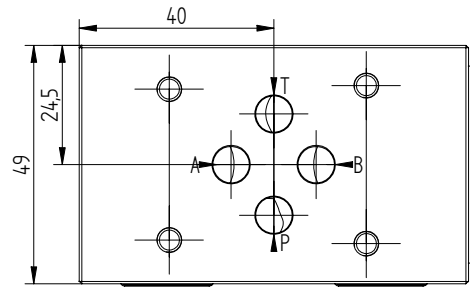
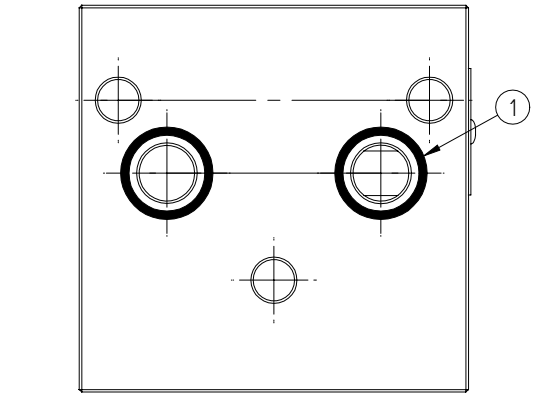


Technical data	
Max. pressure	250 bar
Weight	0,8 Kg
Manifold material	Aluminium
M port	1/4" G
A / B ports	1/2" G



N°	Description	Q.ty
1	OR 2062 i. Ø 15,60 cross section 1,78 (P-T)	2
2	Ø 8,5 through hole for tie rod	3
3	M8x15 thread for mounting	2



Dimensions in mm

Ordering code

H	3	1	0	9	A
---	---	---	---	---	---

Hydrover product

Product series

31 series - Modular Cetop 3 subplates for parallel circuits

Manifold material
Aluminium

Product ID