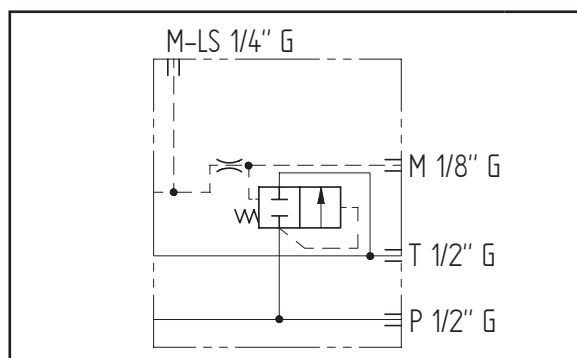
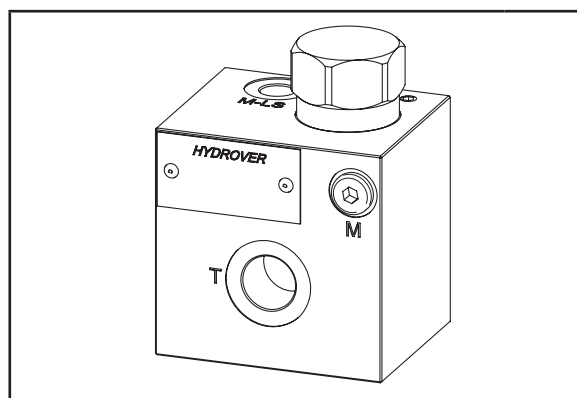
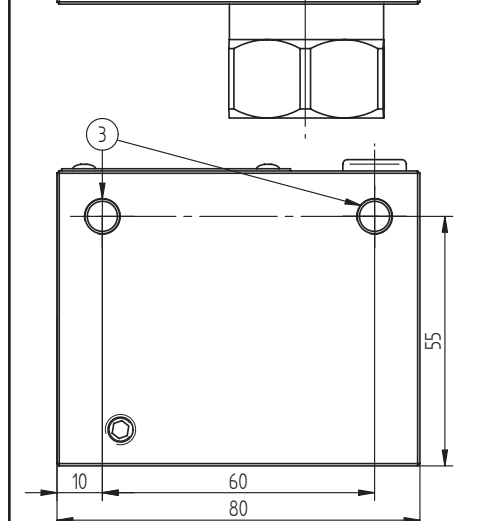
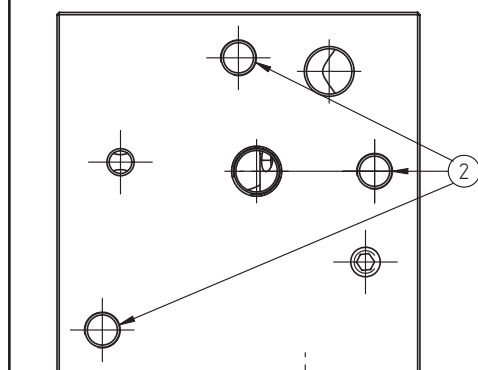
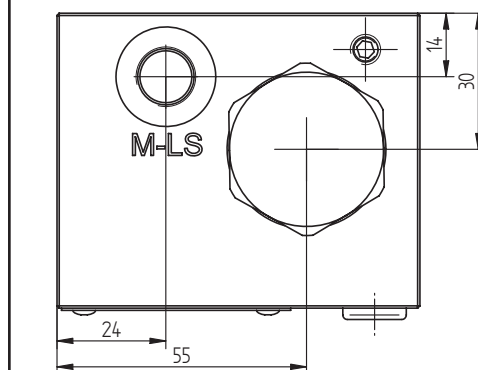


Dimensions in mm

| Technical data    |           |
|-------------------|-----------|
| Max. pressure     | 250 bar   |
| Max. flow         | 90 lpm    |
| Weight            | 1,5 Kg    |
| Manifold material | Aluminium |
| M port            | 1/8" G    |
| M-LS port         | 1/4" G    |
| P / T ports       | 1/2" G    |



| N° | Description               | Q.ty |
|----|---------------------------|------|
| 1  | Pressure compensator      | 1    |
| 2  | M8x13 for tie rod         | 3    |
| 3  | M8x15 thread for mounting | 2    |



Ordering code

|   |   |   |   |   |   |   |   |   |   |
|---|---|---|---|---|---|---|---|---|---|
| H | 3 | 2 | 0 | 4 | A | _ | - | _ | _ |
|---|---|---|---|---|---|---|---|---|---|

**Hydrover product**

**Product series**

32 series - Load sensing modular Cetop 3 subplates for parallel circuits

**Product ID**

**Carry over\***

Standard  
T as carry over

**Compensator spring**

5.5 bar (standard)

12.5 bar

19 bar

**Manifold material**

Aluminium

\* The Carry over version have a plug on T. Authorizes the use of the flow in excess. T becomes P1.

