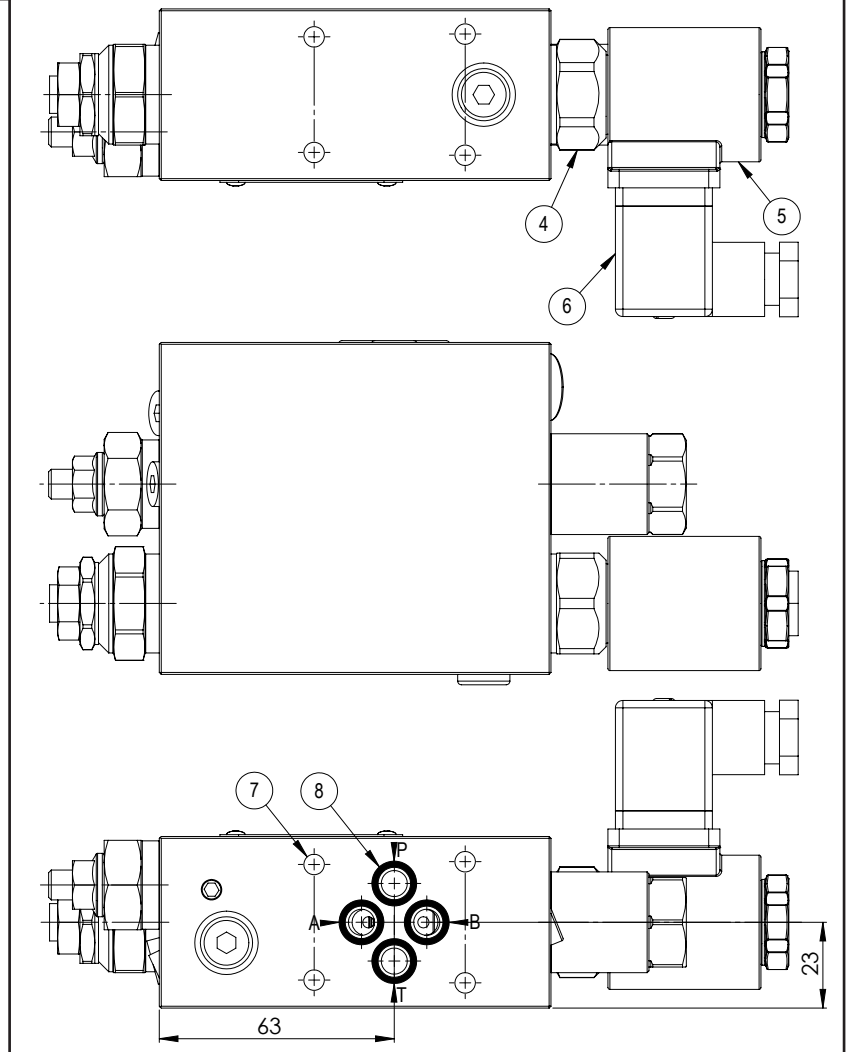
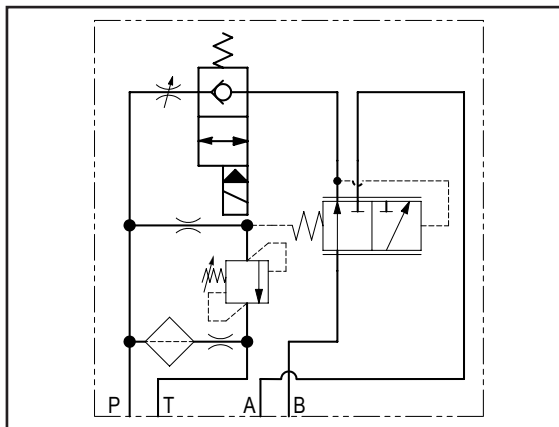
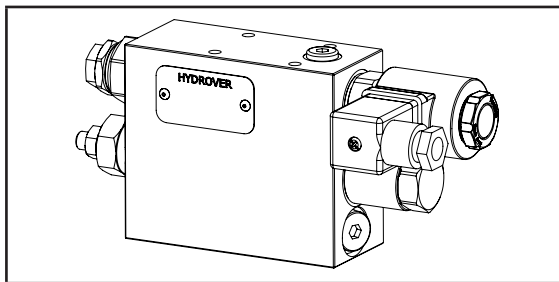


Dimensions in mm

Technical data	
Max. pressure	250 bar
Max. inlet flow	45 lt/1
Max. priority flow	30 lt/1
Weight	1,9 Kg
Manifold material	Aluminum



N°	Description	Q.ty
1	Bosch Rexroth bidirectional flow restrictor OD.21.01-X-36 depicted with screw adjustment *	1
2	Bosch Rexroth relief valve VSN-08A *	1
3	Logic element Bosch Rexroth VRLA-10A-S *	1
4	Bosch Rexroth solenoid valve OD.15.05.36-Y-000000 depicted without manual override *	1
5	Bosch Rexroth coil D36 - CLASS H DIN 43650 ISO 4400 *	1
6	Connector DIN 43650 ISO 4400	1
7	Ø 5,5 through hole with counterbore for mounting	4
8	OR 108 i. Ø 8,73 cross section 1,78	4

* per caratteristiche tecniche complete cliccare sul collegamento blu o consultare a fine catalogo la sezione componenti

Ordering code

H 3 5 0 6 A _ _ Q _ _ - _ _ - _ _

Hydrover product

Product series

35 series - Cetop 3 valves

Product ID

Manifold material

Aluminum

Logic element spring

5,5 bar = 5
10 bar = 1

Restrictor adjustment type

Screw = S
Knob = K

Relief valve adjustment type *

Screw = S
Knob = K

Solenoid valve coil connection *

1 = DIN 43650 ISO 4400

Solenoid valve coil voltage *

OB = 12V DC
OC = 24V DC
OD = 48V DC
OU = 110V RAC
AH = 230V RAC

Solenoid valve manual override *

E0 = Without
EV = Screw

Relief valve adjustment pressure range *

0 = 10-70 bar
1 = 35-140 bar
2 = 105-210 bar
3 = 175-350 bar
3 = 35-350 bar (knob reg.)

* Omit if not required. For example, to order the product without the solenoid cartridge valve coil, omit the coil voltage and coil connection options: H3506A5SQ-S2-E0.

