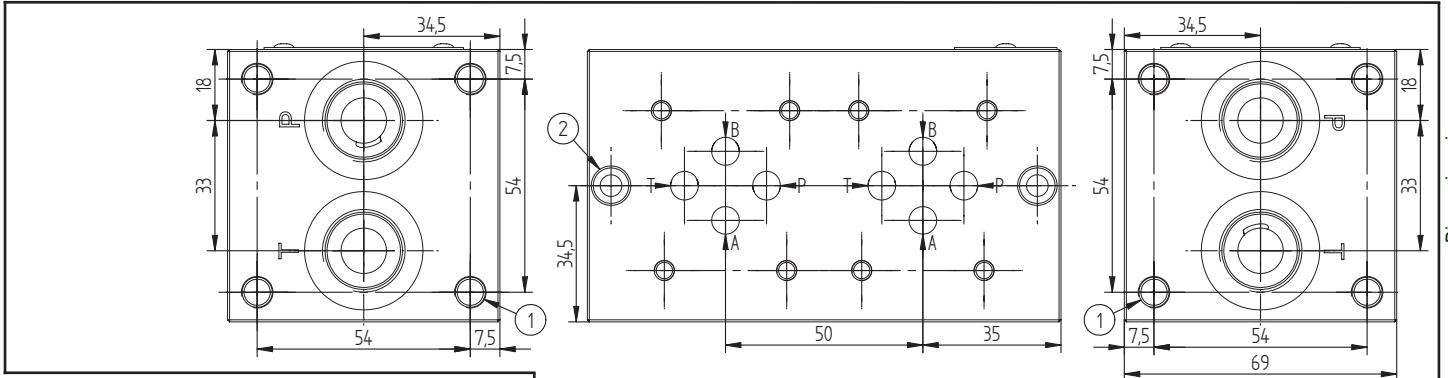
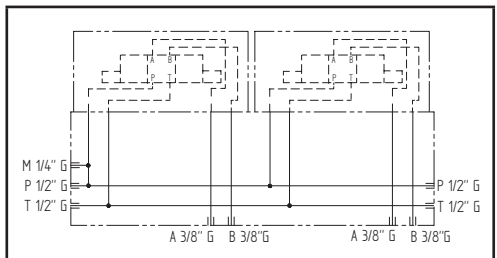
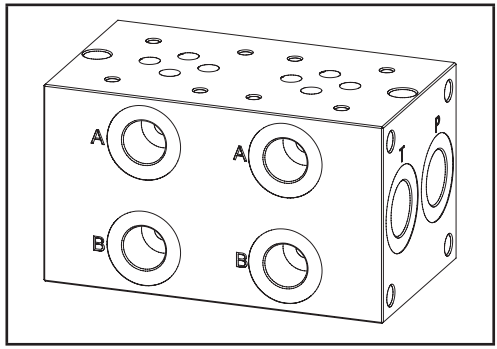
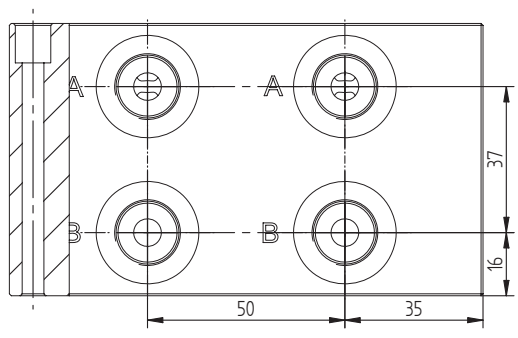
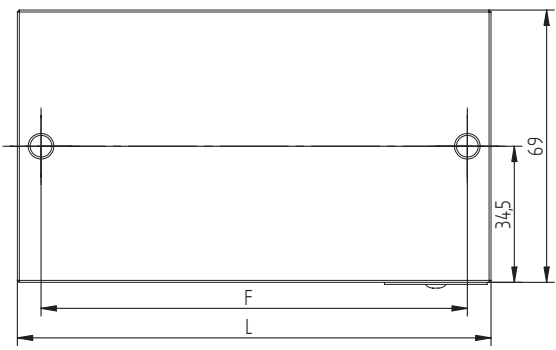
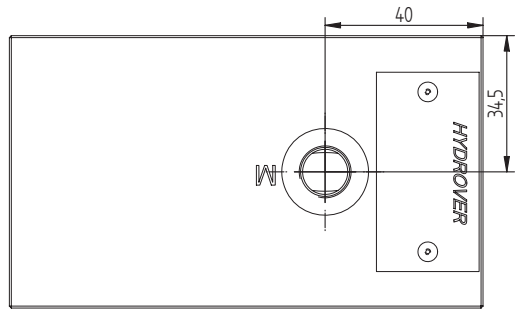


Cetop 3 subplate from 1 to 7 stations  
crossing P-T ports 1/2" G / side A-B ports 3/8" G

**H3601**



Technical data		
	Aluminum	Steel
Press. max.	250 bar	350 bar
1 stat. weight	0,8 Kg	2,2 Kg
2 stat. weight	1,4 Kg	3,9 Kg
3 stat. weight	2 Kg	5,5 Kg
4 stat. weight	2,6 Kg	7,2 Kg
5 stat. weight	3,2 Kg	8,8 Kg
6 stat. weight	3,8 Kg	10,5 Kg
7 stat. weight	4,4 Kg	12,1 Kg
M port	1/4" G	
A / B ports	3/8" G	
P / T ports	1/2" G	



N°	Description	Q.ty
1	M8x15 thread for mounting	8
2	Ø 5,5 through hole for mounting	2

Stat.	1	2	3	4	5	6	7
F	58	108	158	208	258	308	358
L	70	120	170	220	270	320	370

Ordering code

H	3	6	0	1	_	_	_
---	---	---	---	---	---	---	---

**Hydrover product**

**Product series**

36 series - Cetop 3 subplates

**Product ID**

**Manifold material**

Aluminum  
Steel

= A  
= S

**Number of Cetop 3 stations**

- |      |            |
|------|------------|
| 1P = | 1 station  |
| 2P = | 2 stations |
| 3P = | 3 stations |
| 4P = | 4 stations |
| 5P = | 5 stations |
| 6P = | 6 stations |
| 7P = | 7 stations |

1 station version (1P)

