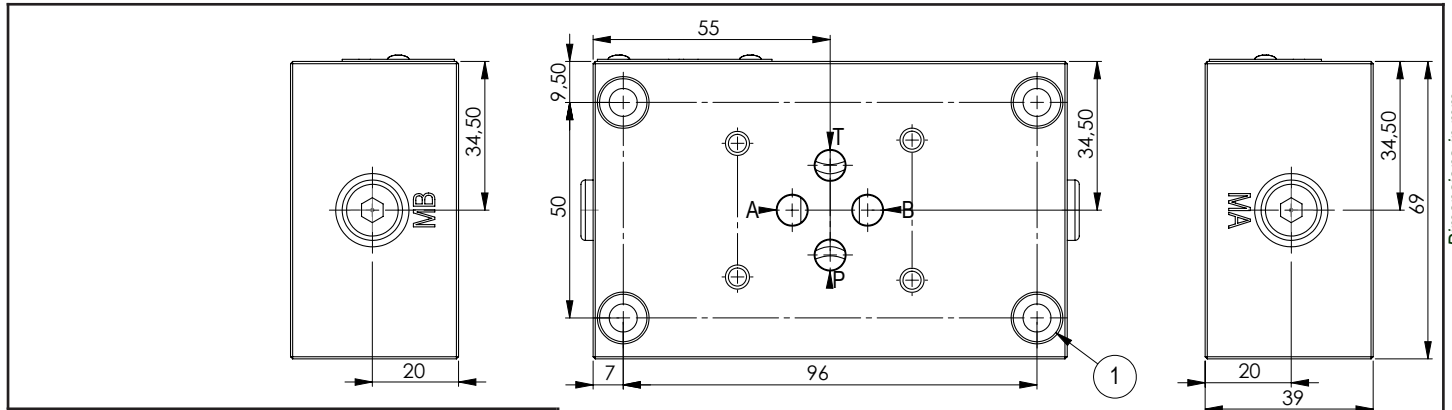


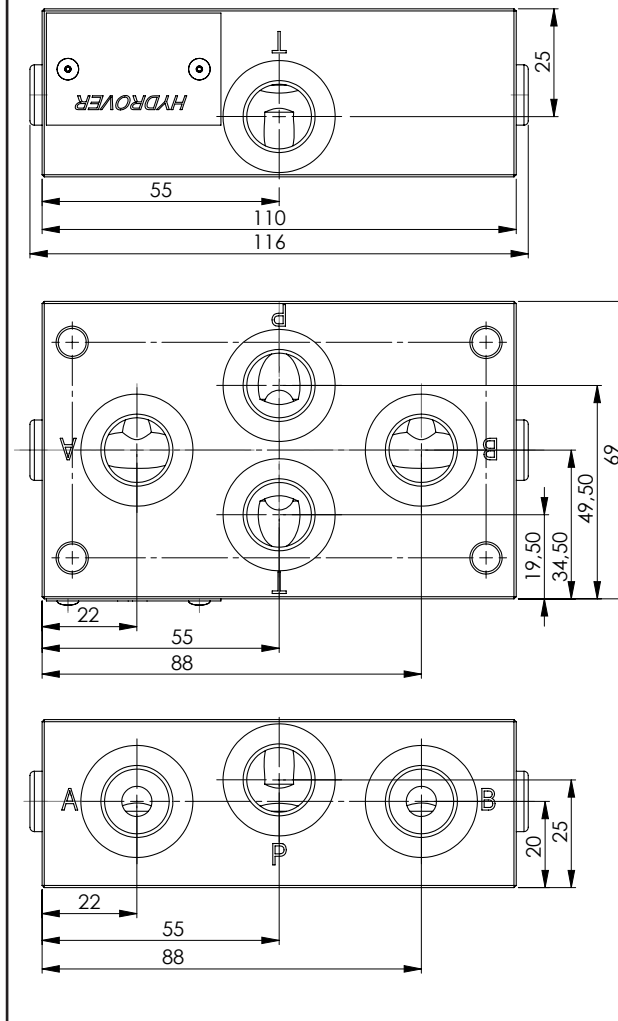
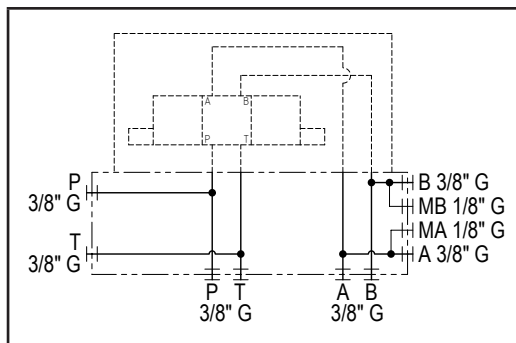
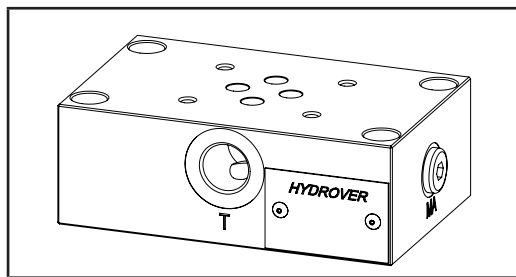
Cetop 3 single station subplate / Side and back P-T-A-B ports

H3611



Dimensions in mm

| Technical data | |
|---------------------|-----------------------------------|
| Max. pressure | Aluminum 250 bar Steel 350 bar |
| Weight | Aluminum 0,7 Kg Steel 2 Kg |
| Manifold material | Aluminum or steel |
| MA / MB ports | 1/8" G |
| P / T / A / B ports | 3/8" G |



| N° | Description | Q.ty |
|----|--|------|
| 1 | Ø 6,5 through hole for mounting with counterbore | 4 |

H3611

Ordering code

| | | | | | |
|---|---|---|---|---|---|
| H | 3 | 6 | 1 | 1 | _ |
|---|---|---|---|---|---|

Hydrover product

Product series

36 series - Cetop 3 subplates

Product ID

Manifold material

Aluminum

Steel

A=

S=