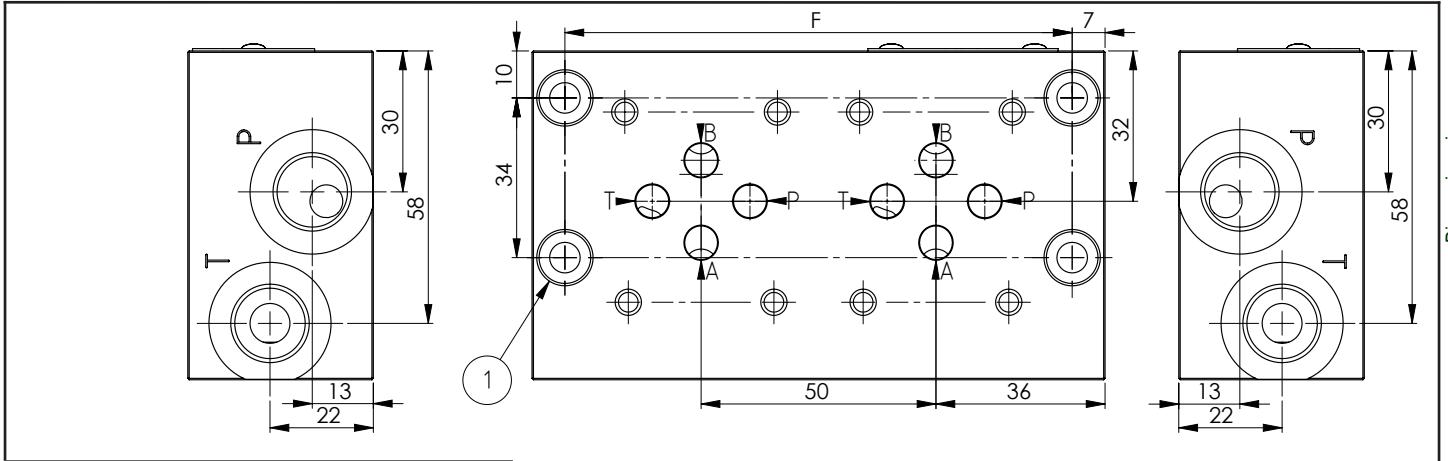
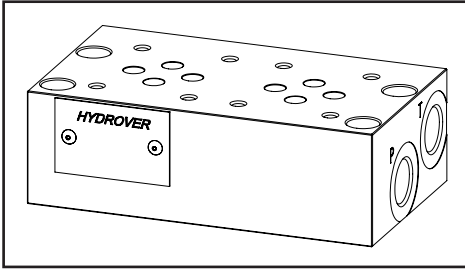
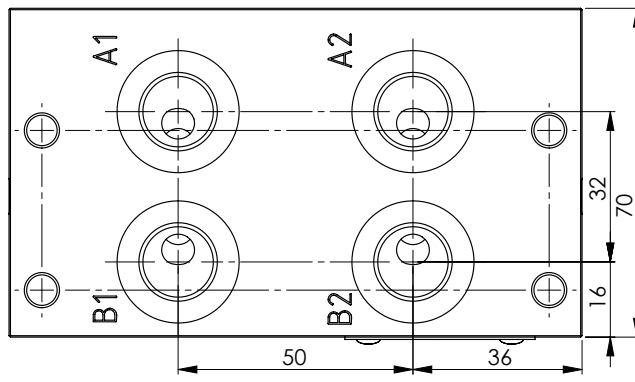
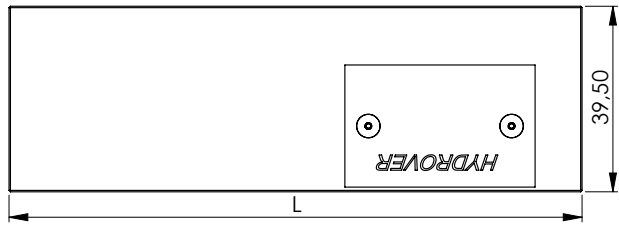


Cetop 3 subplate from 2 to 9 stations
crossing P-T ports 3/8" G / back A-B ports 3/8" G

H3612

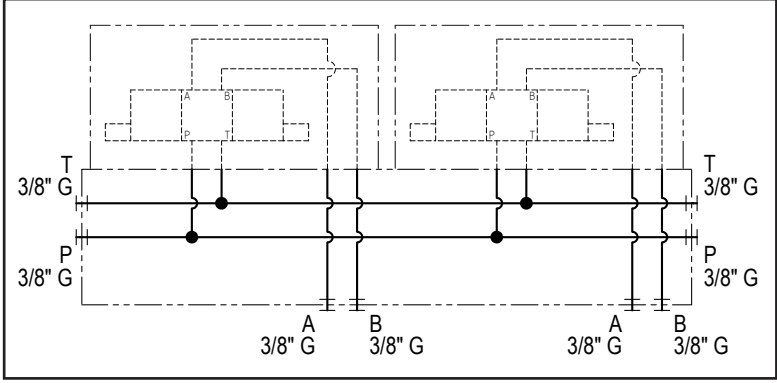


Technical data	
Max. pressure	250 bar
Max. pressure su T	25 bar
2 stations weight	0,83 Kg
3 stations weight	1,18 Kg
4 stations weight	1,53 Kg
5 stations weight	1,88 Kg
6 stations weight	2,23 Kg
7 stations weight	2,58 Kg
8 stations weight	2,93 Kg
9 stations weight	3,28 Kg
Manifold material	Aluminium
P / T / A / B ports	3/8" G



N°	Description	Q.ty
1	∅ 6,5 through hole for mounting	4

Stat.	2	3	4	5	6	7	8	9
F	108	158	208	258	308	358	408	458
L	122	172	222	272	322	372	422	472



Ordering code

H	3	6	1	2	A	_	_
---	---	---	---	---	---	---	---

Hydrover product

Product series

36 series - Cetop 3 subplates

Product ID

Manifold material

Aluminium

Number of Cetop 3 stations

2P =	2 stations
3P =	3 stations
4P =	4 stations
5P =	5 stations
6P =	6 stations
7P =	7 stations
8P =	8 stations
9P =	9 stations