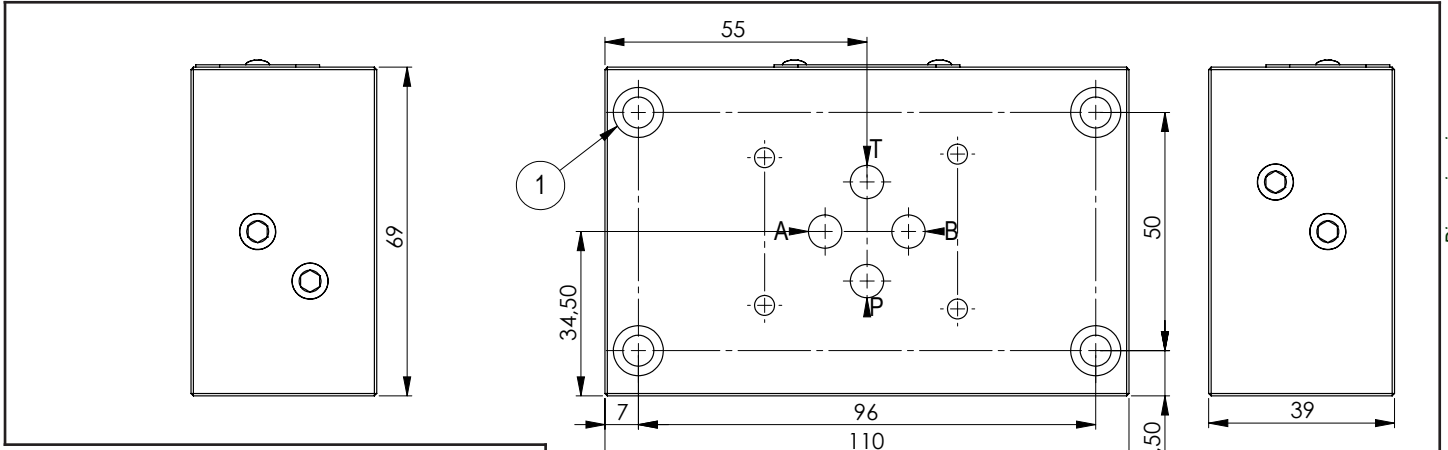
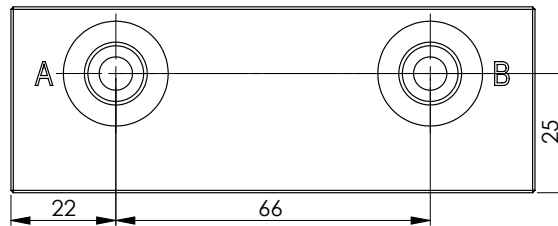
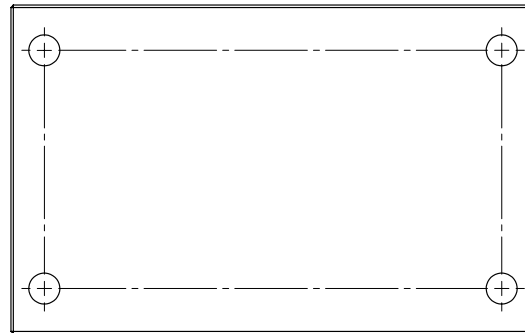
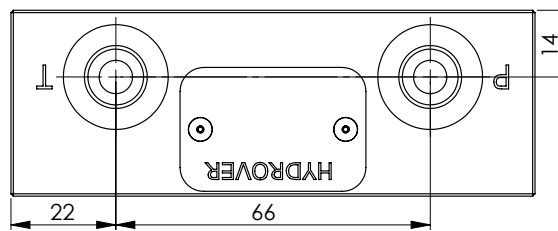
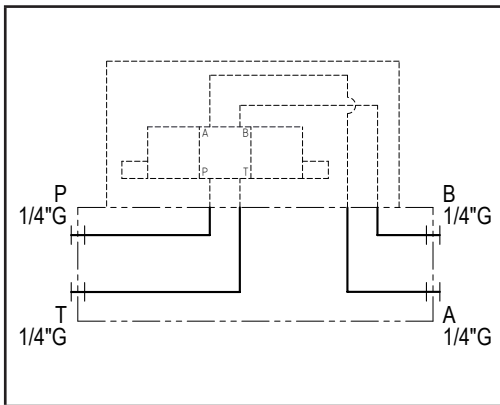
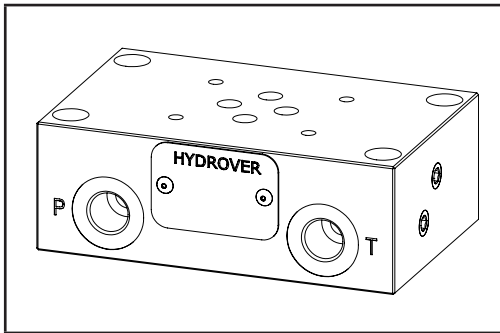


Cetop 3 single station subplate / side P-T-A-B ports 1/4"G **H3636**

Dimensions in mm



Technical data	
Max. pressure	250 bar
Weight	0,8 Kg
Manifold material	Aluminium
P / T / A / B ports	1/4" G



N°	Description	Q.ty
1	Ø 6,5 through hole for mounting with counterbore	4

Ordering code

H	3	6	3	6	A
---	---	---	---	---	---

**Hydrover product**

**Product series**

36 series - Cetop 3 subplates

**Product ID**

**Manifold material**

Aluminium