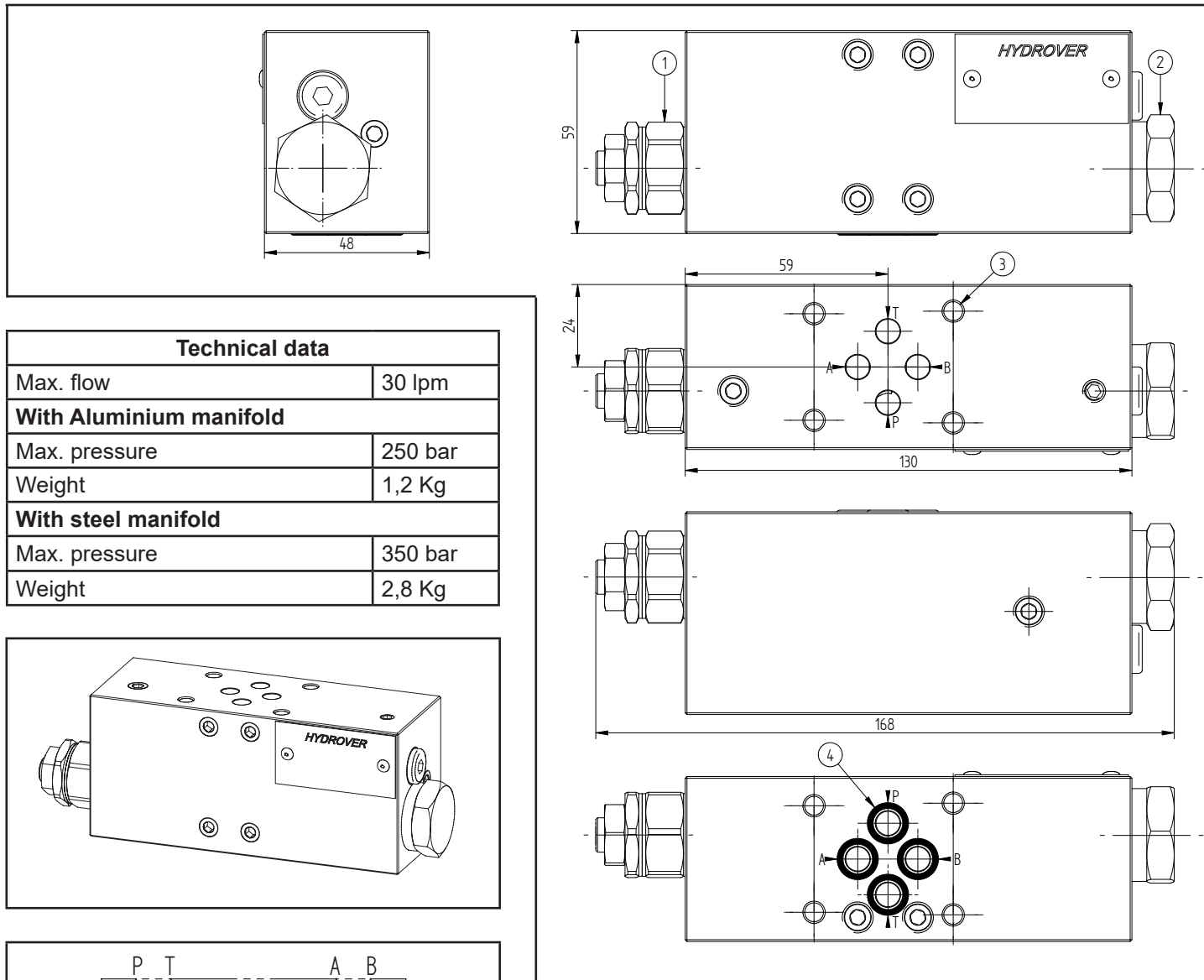
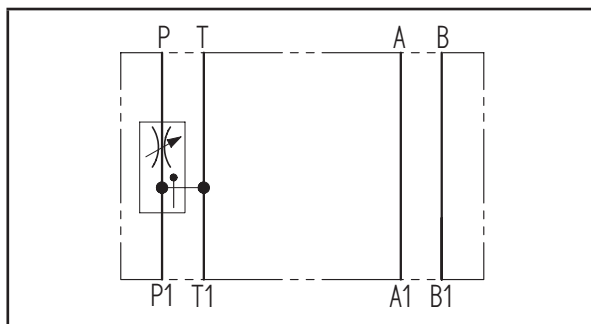
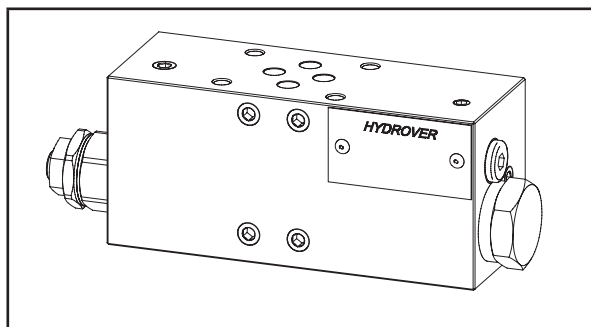


Cetop 3 modular 3 way compensated flow regulator valve on P **H3907**



Dimensions in mm

Technical data	
Max. flow	30 lpm
With Aluminium manifold	
Max. pressure	250 bar
Weight	1,2 Kg
With steel manifold	
Max. pressure	350 bar
Weight	2,8 Kg



N°	Description	Q.ty
1	Bosch Rexroth bidirectional flow restrictor OD.21.01-X-56 * depicted with screw adjustment	1
2	Pressure compensator	1
3	Ø 5,5 through hole for mounting	4
4	OR 108 i. Ø 8,73 cross section 1,78	4

* for complete technical information, click on the blue link or go to the components section at the end of the catalogue

Ordering code

H 3 9 0 7 _ _ _ Q

Hydrover product

Product series

39 series - Cetop 3 modular valves

Product ID

Flow regulator adjustment type

S = Screw
K = Knob

Compensator spring

6 = 6 bar (standard)
1 = 12 bar

Manifold material

A = Aluminium
S = Steel

Notes:

With the 3 way compensated flow regulation it's possible to work to the load pressure plus 4/12 bar (compensator spring) rather than at the maximum pressure valve setting as with the 2 way type.

You can use several modular 3 way compensated flow regulation valves in parallel (see example), but:

- the solenoid valves must have the P closed
- you can't do simultaneous actions
- you can't close completely one or more flow regulators

