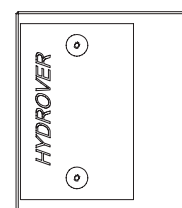
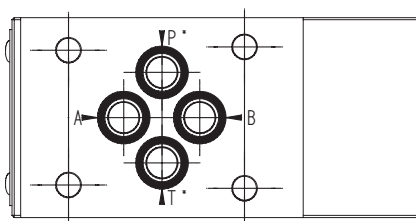
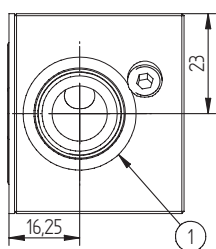
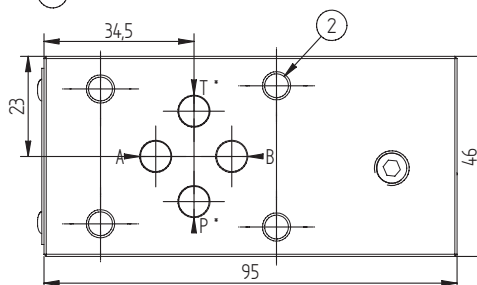
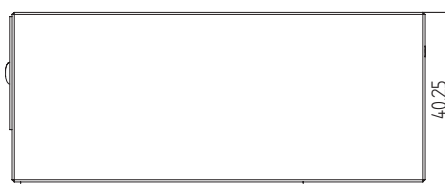


Cetop 3 modular manifold with CA-08A-2N cavity between P (end cavity) and T (side cavity) for valves / invertible with seal plate

H3908



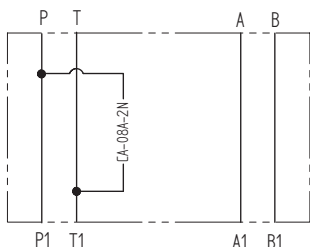
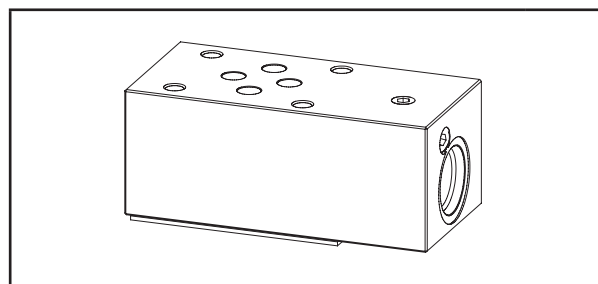
Dimensions in mm



* P and T are inverted when the manifold is upside/down.

Technical data

Max. pressure	Aluminum:	250 bar
	Steel:	350 bar
Weight	Aluminum:	0,5 Kg
	Steel:	1,2 Kg
Manifold material	Aluminum o Steel	



N°	Description	Q.ty
1	Cavity CA-08A-2N	1
2	Ø 5,5 through hole for mounting	4
3	Seal plate	1

This Cetop 3 modular manifold have one CA-08A-2N cavity.
With a few valves and solenoid valves, you can configurare a high quantity of functions.

H3908

Ordering code

H	3	9	0	8	_
---	---	---	---	---	---

Hydrover product

Product series

39 series - Cetop 3 modular valves

A =
S =

Manifold material
Aluminum
Steel

Product ID