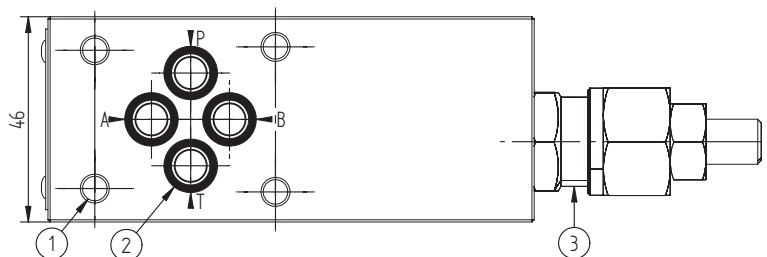
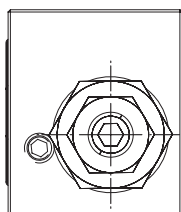
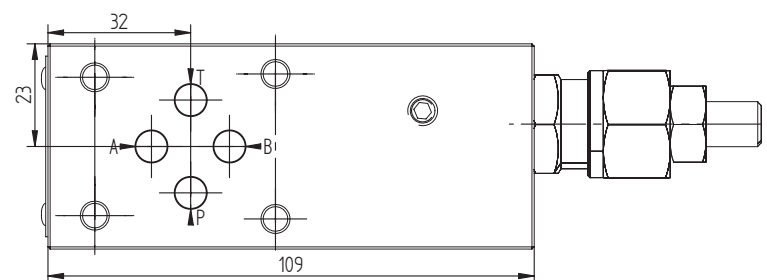
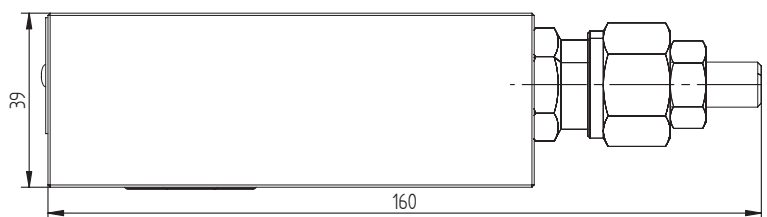
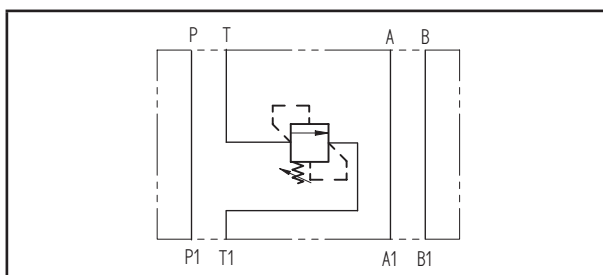
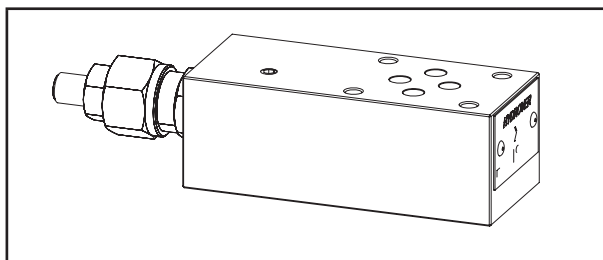


Cetop 3 modular relief valve for back pressure on T **H3909**



Dimensions in mm

Technical data	
Max. pressure	250 bar
Max. flow	30 lpm
Weight	0,7 Kg
Manifold material	Aluminum



N°	Description	Q.ty
1	Ø 5,5 through hole for mounting	4
2	OR 108 i. Ø 8,73 cross section 1,78	4
3	Bosch Rexroth relief valve VS-30 * depicted with screw adjustment	1

* for complete technical information, click on the blue link or go to the components section at the end of the catalogue

Ordering code

H	3	9	0	9	A	-	-	-
---	---	---	---	---	---	---	---	---

Hydrover product

Product series

39 series - Cetop 3 modular valves

Product ID

Relief valve adjustment pressure range *

- 0 = 5-50 bar
- 1 = 30-100 bar
- 2 = 50-210 bar
- 3 = 100-350 bar

Relief valve adjustment type *

- S = Screw
- K = Knob

Manifold material
Aluminum

* Omit if not required. To order the product without the relief cartridge valve, omit the adjustment type and pressure range options: H3909A.
The manifold will still be provided with the corresponding cavity.