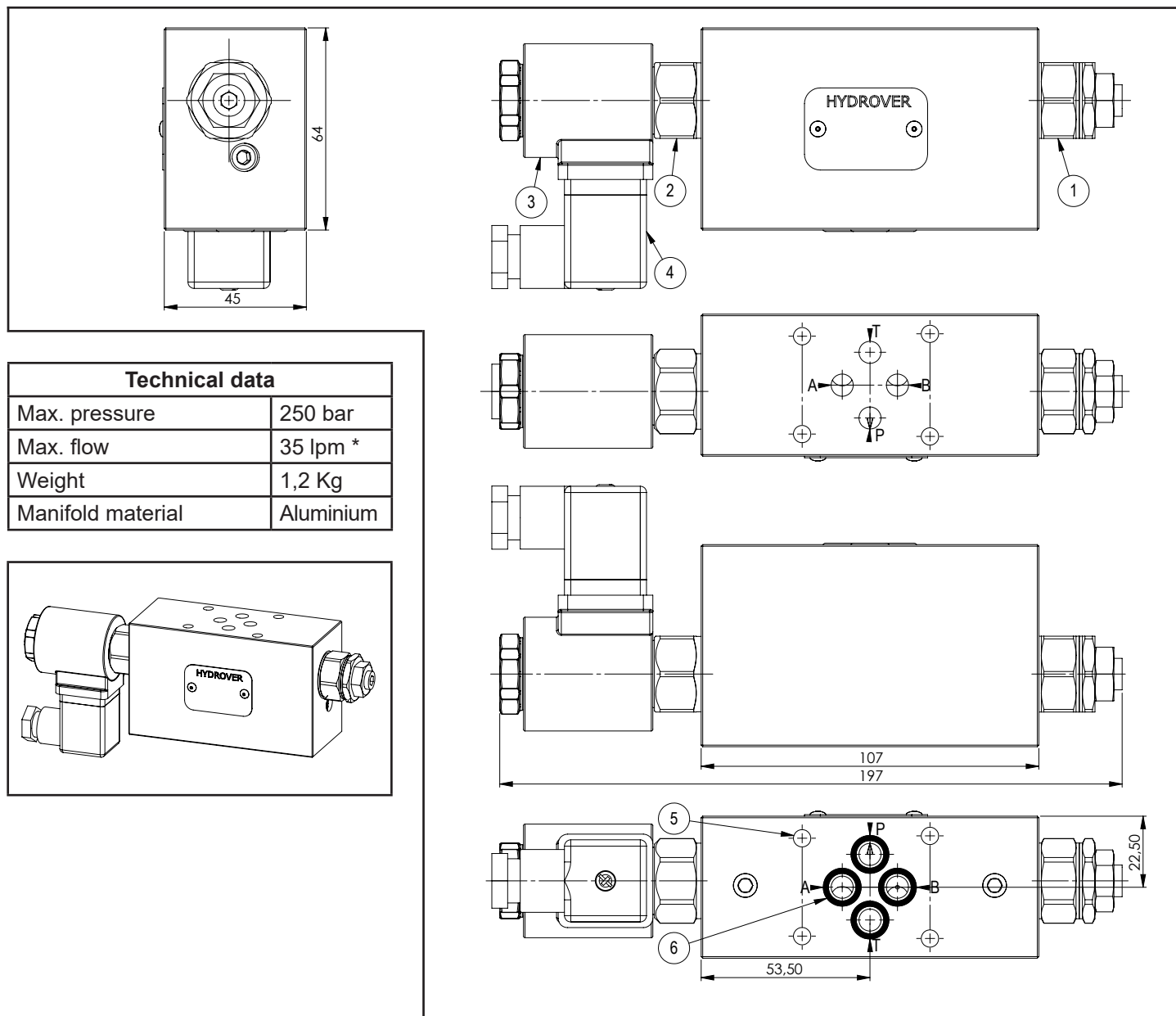
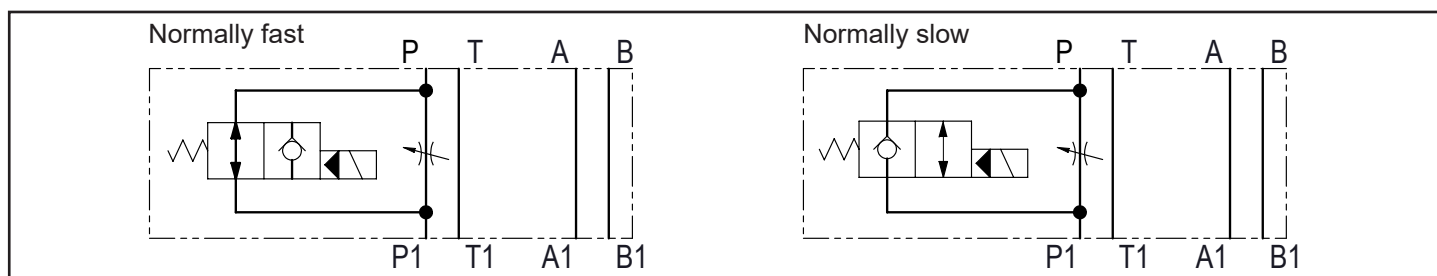
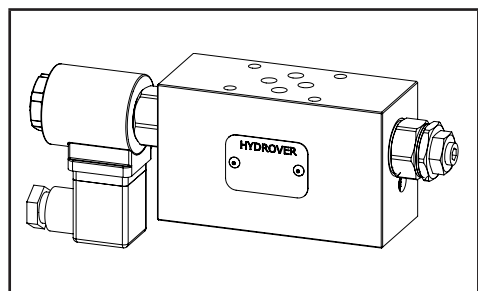


Modular Cetop 3 with 2 way flow regulator on P and fast slow speed **H39104**

Dimensions in mm



Technical data	
Max. pressure	250 bar
Max. flow	35 lpm *
Weight	1,2 Kg
Manifold material	Aluminium



N°	Description	Q.ty
1	Bosch Rexroth bidirectional flow restrictor OD.21.01-X-56 * depicted with screw adjustment	1
2	Bosch Rexroth solenoid valve VEI-16-08A-NC OD.15.05.18-Y-000000 (normally slow) or VEI-16-08A-NA OD.15.06.18-Y-000000 (normally fast) depicted without manual override *	1
3	Bosch Rexroth coil D36 - CLASS H DIN 43650 ISO 4400 *	1
4	Connector DIN 43650 ISO 4400	1
5	Ø 5,5 through hole for mounting	4
6	OR 108 i. Ø 8,73 cross section 1,78	4

* for complete technical information, click on the blue link or go to the components section at the end of the catalogue

Ordering code

H 3 9 1 0 4 A - _ Q - _ _ - _ _ - _ _

Hydrover product

Product series

39 series - Cetop 3 modular valves

Product ID

Manifold material

Aluminium

Restrictor adjustment type

Screw = S
Knob = K

Slow or fast in normal position *

Normally slow = NL
Normally fast = NR

Solenoid valve coil connection *

1 = DIN 43650
ISO 4400

Solenoid valve coil voltage *

OB = 12V DC
OC = 24V DC
OD = 48V DC
OU = 110V RAC
AH = 230V RAC

Solenoid valve manual override *

E0 = Without
EP = Push (NR)
EV = Screw (NL)
EG = Push and twist (NR)

* Omit if not required. For example, to order the product without the relief cartridge valve, omit the relief valve adjustment type and pressure range options: H39104A-SQ.
The manifold will still be provided with the corresponding cavity.