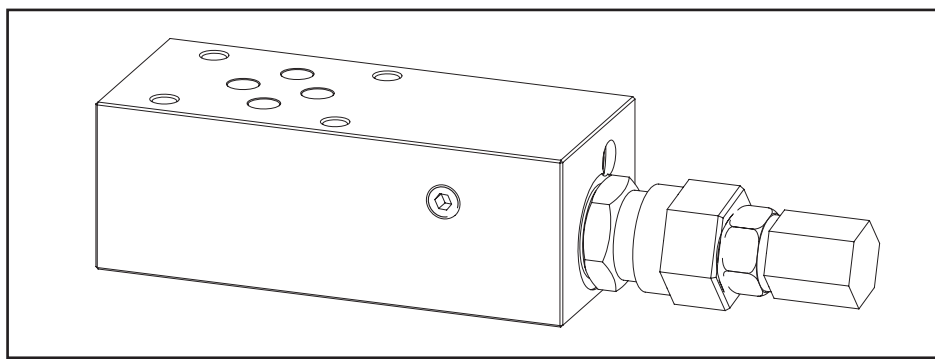
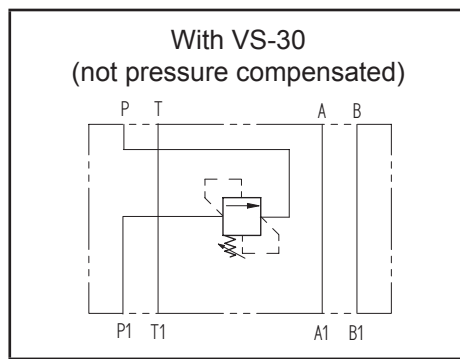
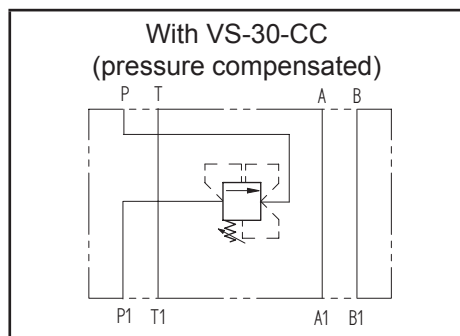


Technical data	
Max. pressure	250 bar
Max. flow	30 lpm
Weight	0,7 Kg
Manifold material	Aluminum



N°	Description	Q.ty
1	Ø 5,5 through hole for mounting	4
2	OR 108 i. Ø 8,73 cross section 1,78	4
3	Bosch Rexroth pressure compensated valve VS-30-CC * (as depicted) It's possible to use a Bosch Rexroth non pressure compensated valve VS-30 * in case it is acceptable to add to the set pressure the pressure necessary for the second branch.	1

* for complete technical information, click on the blue link or go to the components section at the end of the catalogue

Ordering code

H	3	9	1	1	A	-	-	-
---	---	---	---	---	---	---	---	---

Hydrover product

Product series

39 series - Cetop 3 modular valves

Product ID

Manifold material

Aluminum

S =
M =

Valve type *

VS-30-CC
VS-30

Valve adjustment pressure range *

0 = 5-50 bar
1 = 30-100 bar
2 = 50-210 bar
3 = 100-350 bar

Valve adjustment type *

S = Screw
K = Knob (only for VS-30)

* Omit if not required. To order the product without the cartridge valve, omit the adjustment type, valve pressure range and valve type options: H3911A.
The manifold will still be provided with the corresponding cavity.