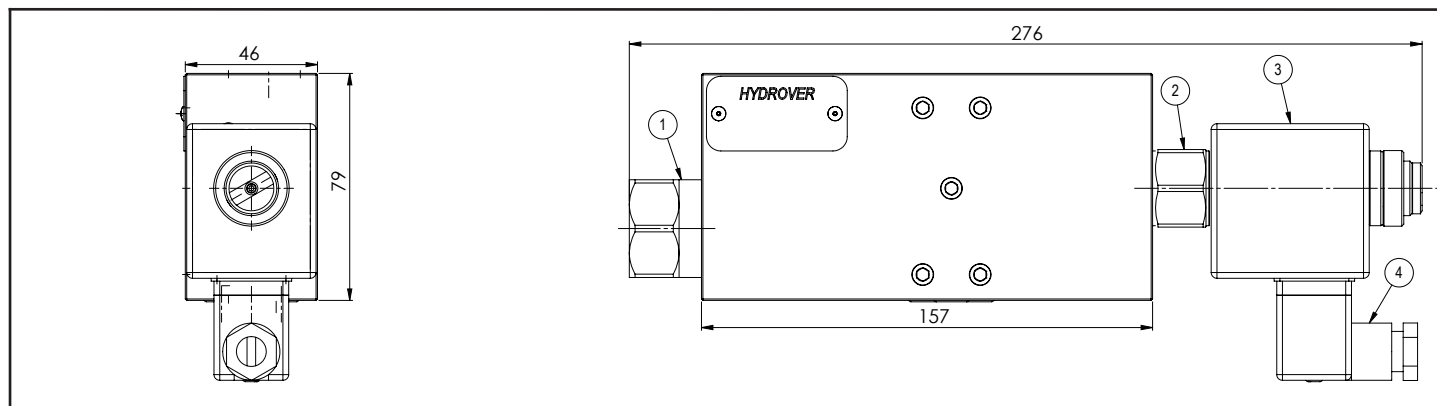
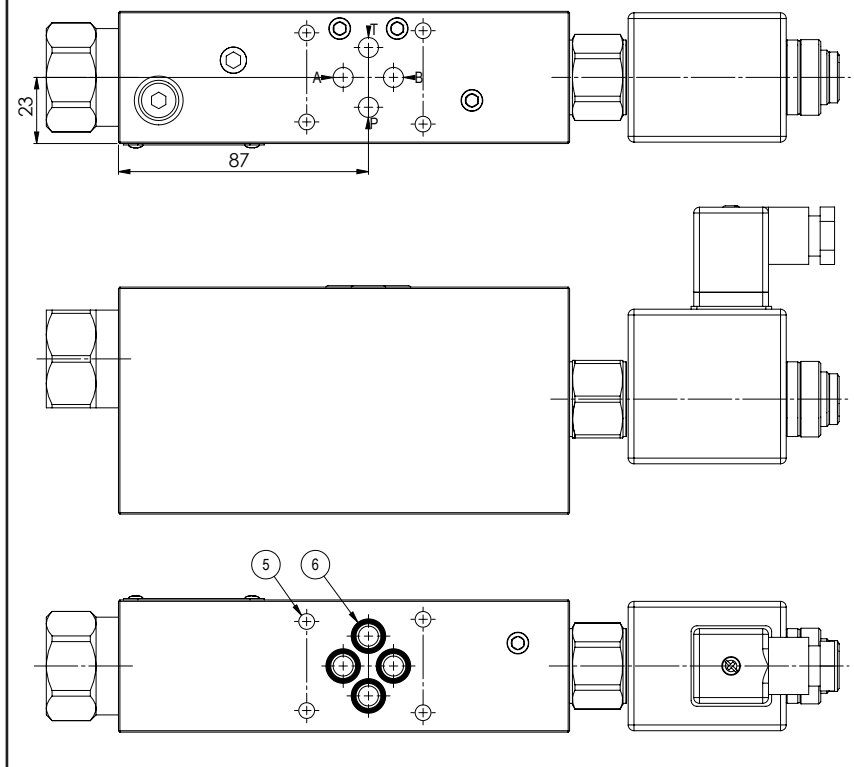
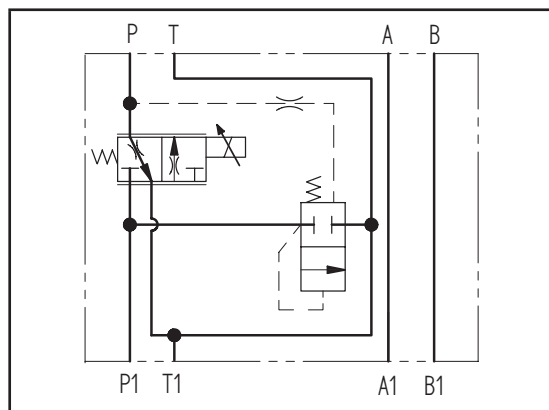
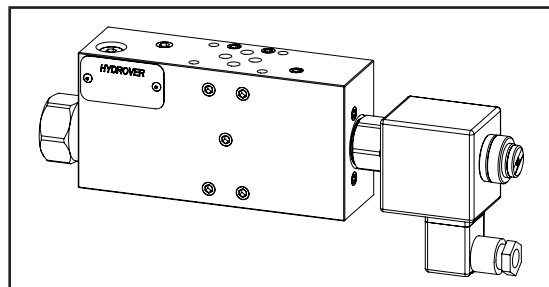


Cetop 3 modular 3 way compensated proportional flow regulator valve on P **H3912**



Dimensions in mm

Technical data	
Max. pressure	210 bar
Input max. flow	65 lpm
Weight	2,2 Kg
Manifold material	Aluminum



N°	Description	Q.ty
1	Pressure compensator	1
2	Bosch Rexroth proportional solenoid valve VEP-5A-2Q-09 / OD.92.05.77-Y-Z *	1
3	Bosch Rexroth coil S5-356 - CLASS H DIN 43650 ISO 4400 *	1
4	Connector DIN 43650 ISO 4400	1
5	Ø 5,5 through hole for mounting	4
6	OR 108 i. Ø 8,73 cross section 1,78	4

* for complete technical information, click on the blue link or go to the components section at the end of the catalogue

Ordering code

H	3	9	1	2	A	_	_	_	_	-	_	_	_
---	---	---	---	---	---	---	---	---	---	---	---	---	---

Hydrover product

Product series

39 series - Cetop 3 modular valves

Product ID

Manifold material

Aluminum

Compensator spring

5.5 bar (standard)	= 6
12.5 bar	= 1
19 bar	= 2

Proportional solenoid valve coil connection *

1 = DIN 43650 ISO 4400

Proportional solenoid valve coil voltage *

OB =	12V DC
OC =	24V DC

Proportional solenoid valve max. flow *

1 =	20 lpm
2 =	30 lpm
3 =	40 lpm

To evaluate the max. flow refer to **VEP-5A-2Q-09 / OD.92.05.77-Y-Z** proportional solenoid valve catalogue and to the compensator spring.

Proportional solenoid valve manual override *

E0 =	Without
EV =	Screw

* Omit if not required. For example, to order the product without the proportional solenoid cartridge valve, omit the coil connection, coil voltage, max. flow and manual override options: H3912A6.
The manifold will still be provided with the corresponding cavity.