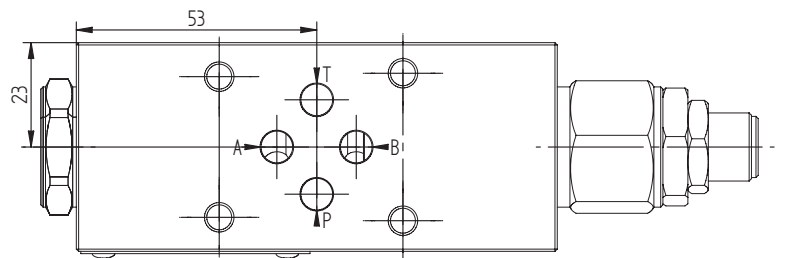
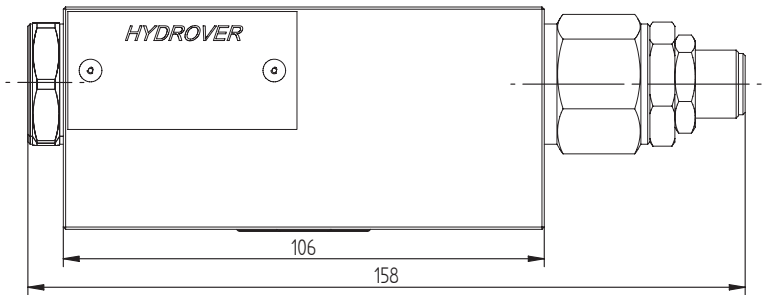
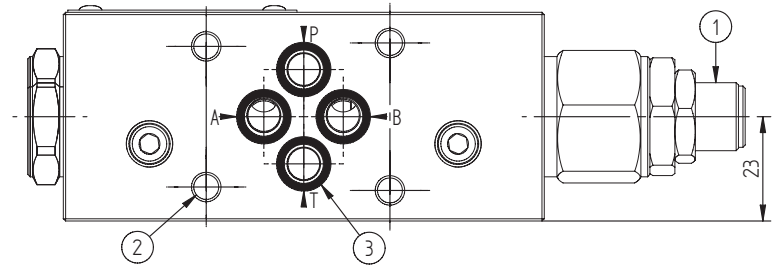
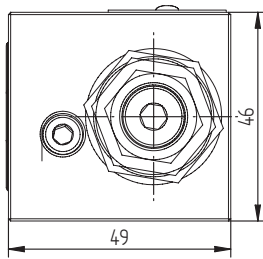
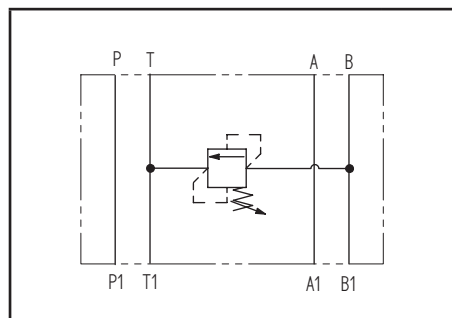


Cetop 3 modular relief valve on B / 70 lpm **H3919**

Dimensions in mm

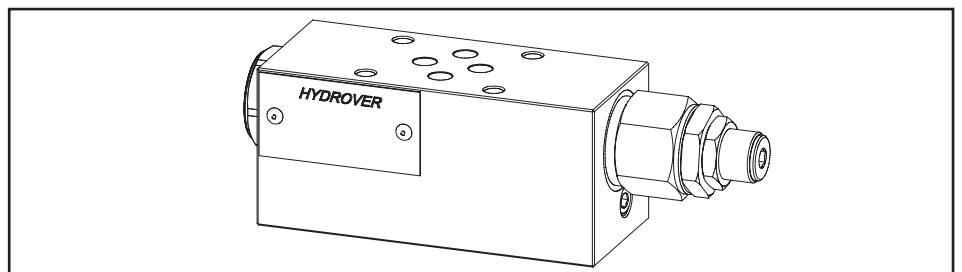


Technical data	
Max. pressure	250 bar
Max. flow	70 lpm
Weight	0,9 Kg
Manifold material	Aluminum



N°	Description	Q.ty
1	Bosch Rexroth relief valve VMD1.070 *	1
2	Ø 5,5 through hole for mounting	4
3	OR 108 i. Ø 8,73 cross section 1,78	4

* for complete technical information, click on the blue link or go to the components section at the end of the catalogue



Ordering code

H	3	9	1	9	A	-	-	-
---	---	---	---	---	---	---	---	---

Hydrover product

Product series

39 series - Cetop 3 modular valves

Product ID

Relief valve adjustment pressure range *

- 0 = 10-60 bar
- 1 = 40-110 bar
- 2 = 110-220 bar
- 3 = 220-260 bar

Relief valve adjustment type *

S = Screw

Manifold material
Aluminum

* Omit if not required. To order the product without the pressure relief cartridge valve, omit the pressure range and the adjustment type options: H3919A.
The manifold will still be provided with the corresponding cavity.