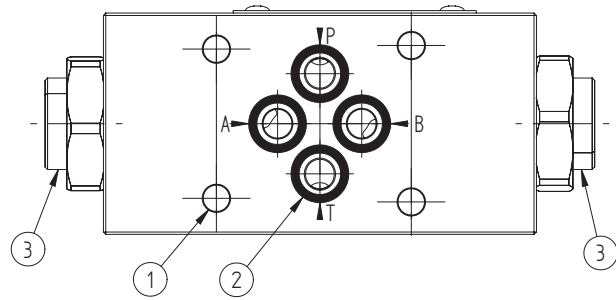
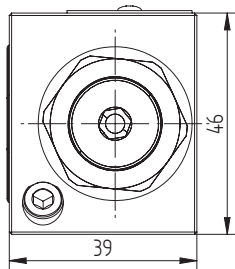
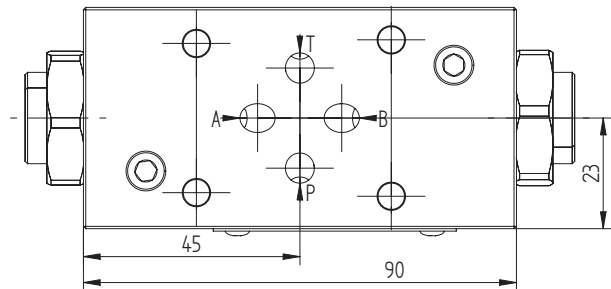
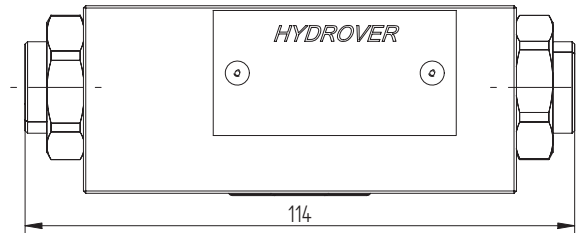


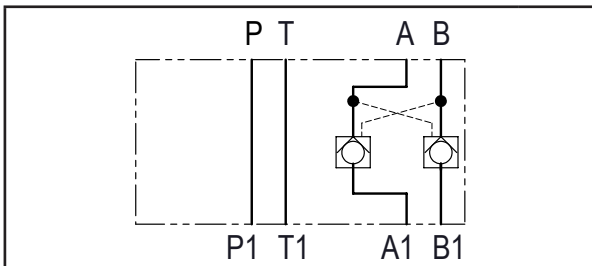
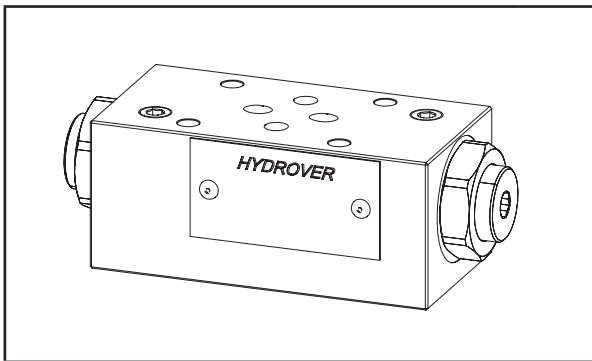
Cetop 3 modular piloted operated check valves on A e B / pilot ratio 7:1 **H3928**



Dimensions in mm



Technical data	
Max. flow	30 lpm
With Aluminium manifold	
Max. pressure	250 bar
Weight	0,6 Kg
With steel manifold	
Max. pressure	350 bar
Weight	1,2 Kg



N°	Description	Q.ty
1	Ø 5,5 through hole for mounting	4
2	OR 108 i. Ø 8,73 cross section 1,78	4
3	Bosch Rexroth check valve	2

H3928

Ordering code

H	3	9	2	8	_	_
---	---	---	---	---	---	---

Hydrover product

Product series

39 series - Cetop 3 modular valves

Product ID

Cracking pressure

3 bar

8 bar

Manifold material

Aluminium

Steel

3 =

8 =

A =

S =