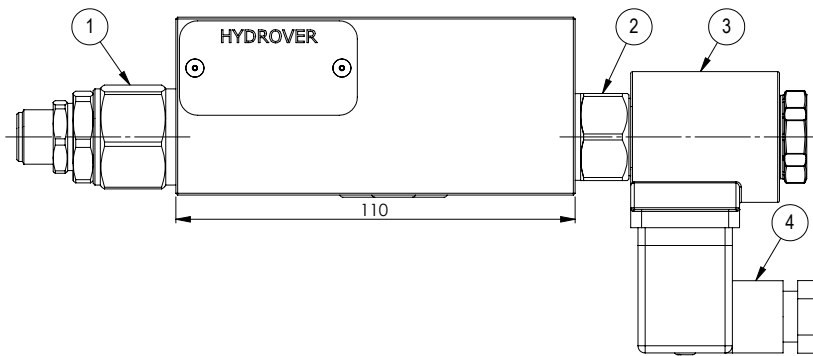
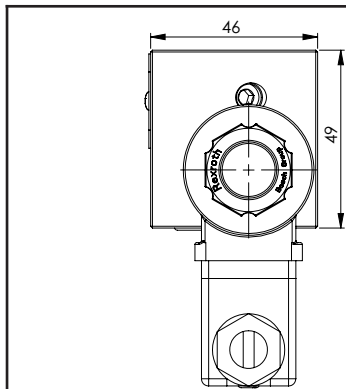
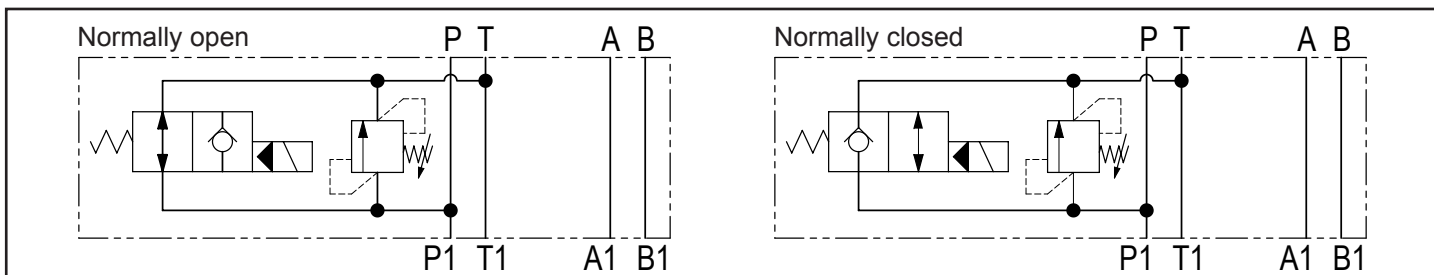
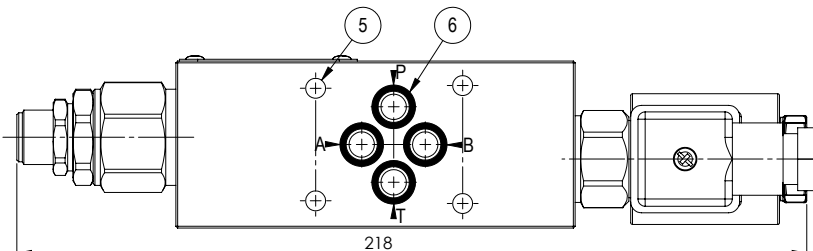
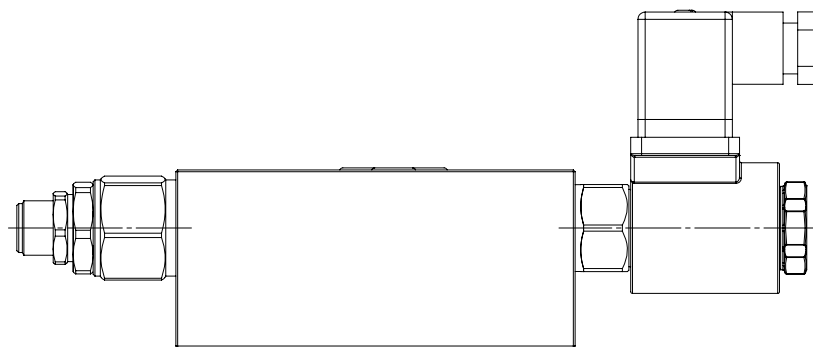
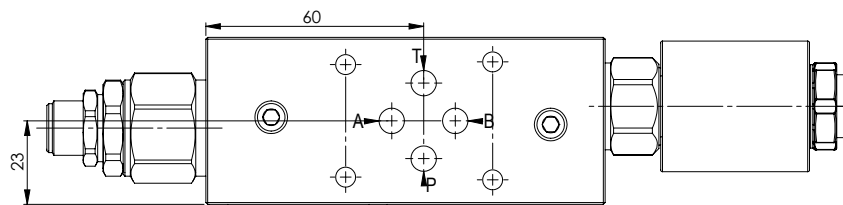
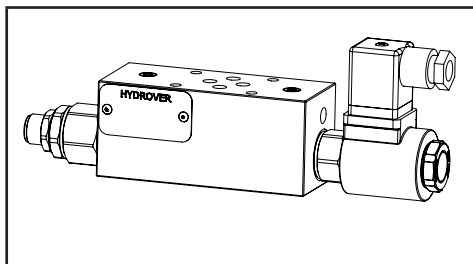


Cetop 3 modular bypass and relief valve / 35 lpm **H3933**

Dimensions in mm



Technical data	
Max. pressure	250 bar
Max. flow	35 lpm
Weight	1,2 Kg
Manifold material	Aluminium



N°	Description	Q.ty
1	Bosch Rexroth solenoid valve <b>VEI-16-08A-NC OD.15.05.18-Y-000000</b> (normally closed) or <b>VEI-16-08A-NA OD.15.06.18-Y-000000</b> (normally open) depicted without manual override *	1
2	Bosch Rexroth coil <b>D36</b> - CLASS H DIN 43650 ISO 4400 *	1
3	Bosch Rexroth relief valve <b>VMD1.040</b> *	1
4	Connector DIN 43650 ISO 4400	1
5	Ø 5,5 through hole for mounting	4
6	OR 108 i. Ø 8,73 cross section 1,78	4

\* for complete technical information, click on the blue link or go to the components section at the end of the catalogue

**H3933**

Ordering code

H 3 9 3 3 A - - - - - - - - - -

**Hydrover product**

**Product series**  
39 series - Cetop 3 modular valves

**Product ID**

**Manifold material**  
Aluminium

**Relief valve adjustment type \***  
Screw = S

**Relief valve pressure range \***  
25-120 bar = 1  
40-200 bar = 2  
200-350 bar = 3

**Solenoid valve coil connection \***  
1 = DIN 43650  
ISO 4400

**Solenoid valve coil voltage \***  
OB = 12V DC  
OC = 24V DC  
OD = 48V DC  
OU = 110V RAC  
AH = 230V RAC

**Solenoid valve manual override \***  
E0 = Without  
EP = Push (NA)  
EV = Screw (NC)  
EG = Push and twist (NA)

**Solenoid valve spool type \***  
NA = Normally open  
NC = Normally closed

\* Omit if not required. For example, to order the product without the relief cartridge valve, omit the relief valve adjustment type and pressure range options: H3933A-E0-OC1.  
The manifold will still be provided with the corresponding cavity.  
To inhibit a function, replace the related valve options with TL: eg H3933A-TL-E0-OC1.  
In the cavity it will be mounted a long plug.

Valve	Cavity	Long plug code
Solenoid valve VEI-16-8A OD.15.05.18-Y-000000 or VEI-16-8A OD.15.06.18-Y-000000	CA-08A-2N	<b>0489A2005600000</b>
Pressure relief valve VMD1.040	CA-10A-2N	<b>0489A2008500000</b>