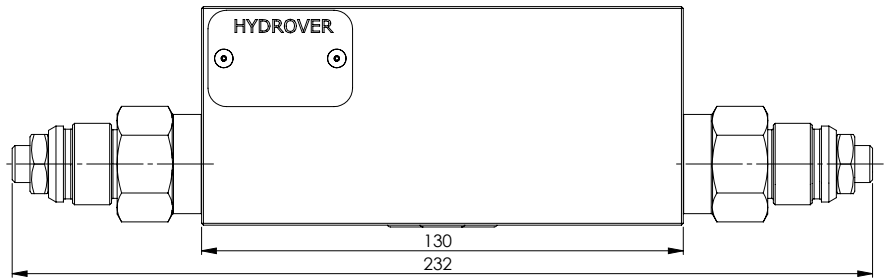
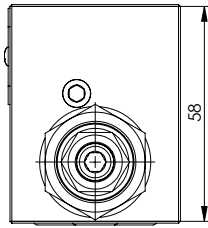
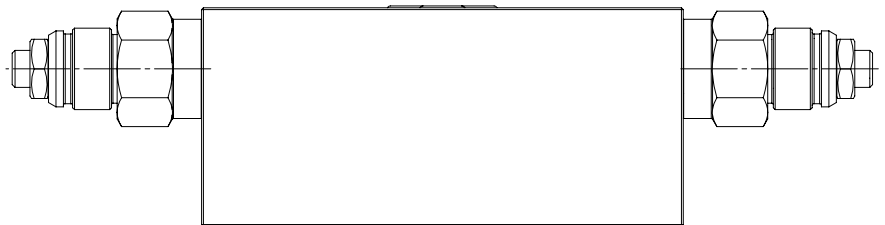
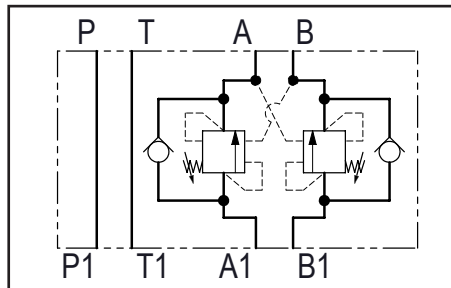
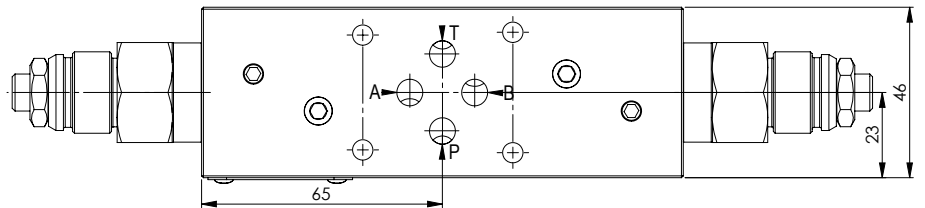


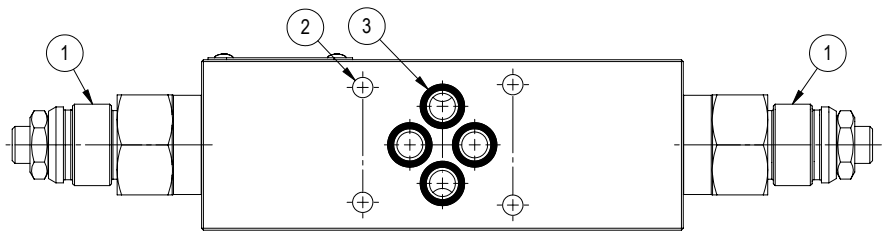
Dimensions in mm



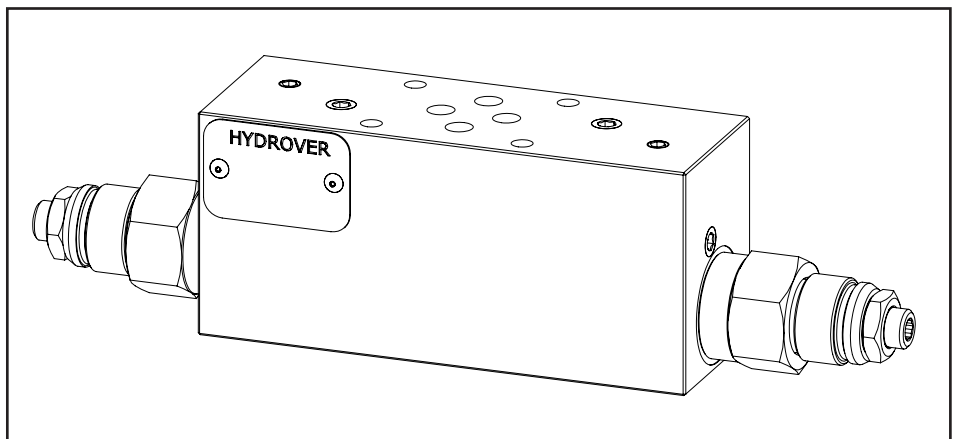
Technical data	
Max. pressure	350 bar
Max. flow	60 lpm *
Weight	2,8 Kg
Manifold material	Steel



N°	Description	Q.ty
1	Bosch Rexroth counterbalance valve <b>VBSN-10A</b> *	2
2	Ø 5,5 through hole for mounting	4
3	OR 108 i. Ø 8,73 cross section 1,78	4



\* for complete technical information, click on the blue link or go to the components section at the end of the catalogue



**H3984**

Ordering code

H	3	9	8	4	S	-	-	-	-	-	-	-
---	---	---	---	---	---	---	---	---	---	---	---	---

**Hydrover product**

**Product series**

39 series - Cetop 3 modular valves

**Product ID**

**Manifold material**

Aluminium

**Counterbalance valve adjustment type on A \***

Screw

= S

**Counterbalance valve adjustment pressure range on A \***

70-210 bar

= 2

140-350 bar

= 3

**Counterbalance valve**

**pilot ratio**

**on B \***

3 = 3:1

8 = 8:1

**Counterbalance valve adjustment pressure range on B \***

2 = 70-210 bar

3 = 140-350 bar

**Counterbalance valve adjustment type on B \***

S =

Screw

**Counterbalance valve pilot ratio on A \***

3 = 3:1

8 = 8:1

\* Omit if not required. To order the product without the counterbalance cartridge valves, omit the adjustment type, pressure range and pilot ratio options: H3984A.  
The manifold will still be provided with the corresponding cavities.