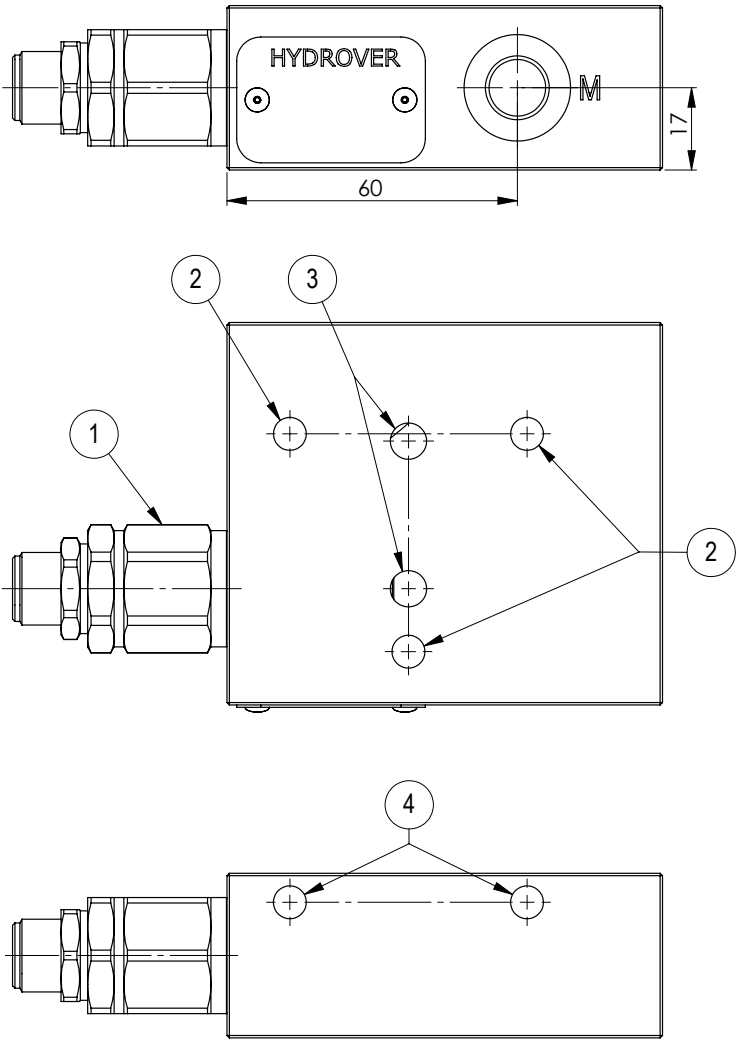
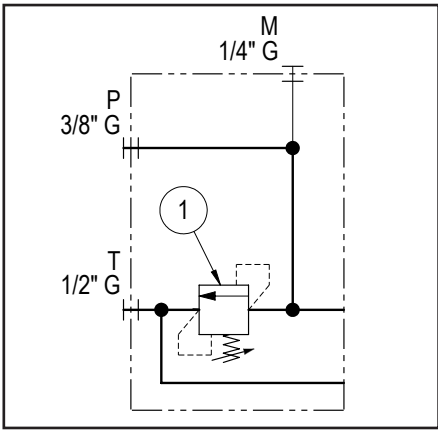
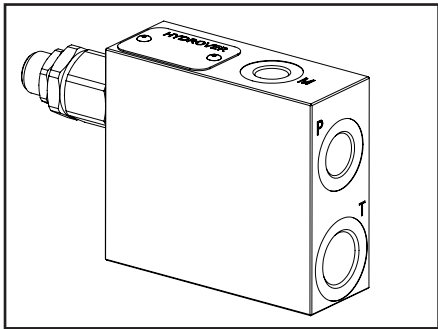


Technical data	
Max. pressure	250 bar
Max. flow	30 lpm *
Weight	0,75 Kg
Manifold material	Aluminium
M port	1/4" G
P port	3/8" G
T port	1/2" G



N°	Description	Q.ty
1	Bosch Rexroth relief valve <b>VMD1.025</b> *	1
2	M8x17 for tie rod	3
3	Ø 7,5 hole without counterbore for O-ring (P-T)	2
4	M8x15 thread for mounting	2

\* for complete technical information, click on the blue link or go to the components section at the end of the catalogue

Ordering code

H	4	1	3	4	A	-	-
---	---	---	---	---	---	---	---

Hydrover product

Product series  
41 series - Plates for Bosch Rexroth ED bankable valves

Product ID

Manifold material  
Aluminium

Relief valve  
adjustment pressure range \*

1=	25-120 bar
2=	40-200 bar
3=	200-350 bar

Relief valve  
adjustment type \*

S = Screw

\* Omit if not required. To order the product without the pressure relief cartridge valve, omit the adjustment type and pressure range options: H4134A.  
The manifold will still be provided with the corresponding cavity.

Flange

