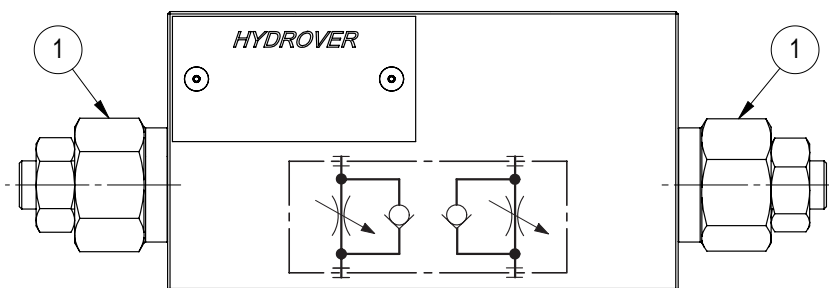
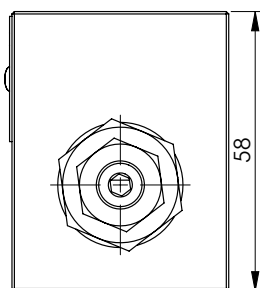
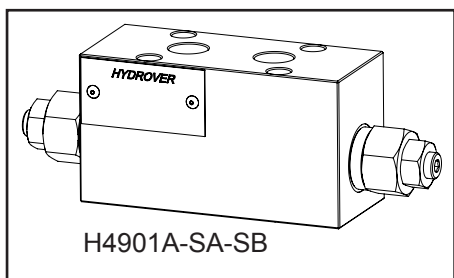
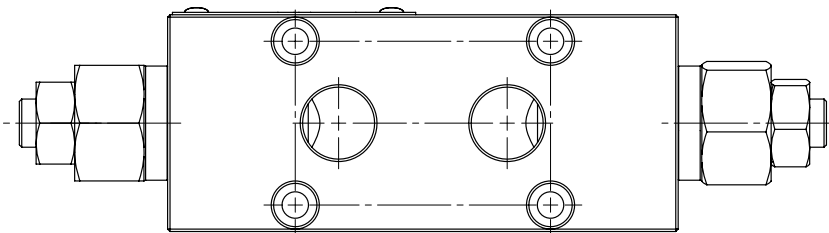
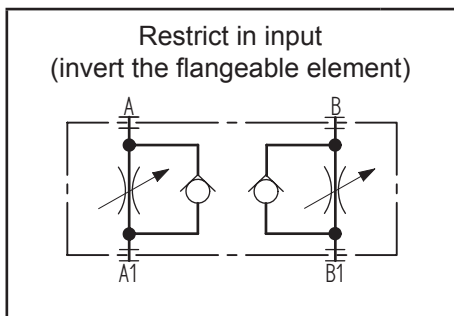
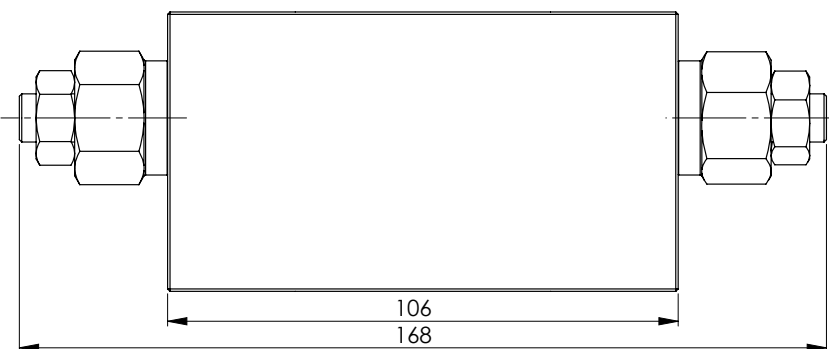
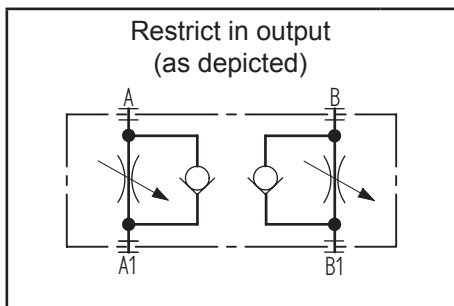
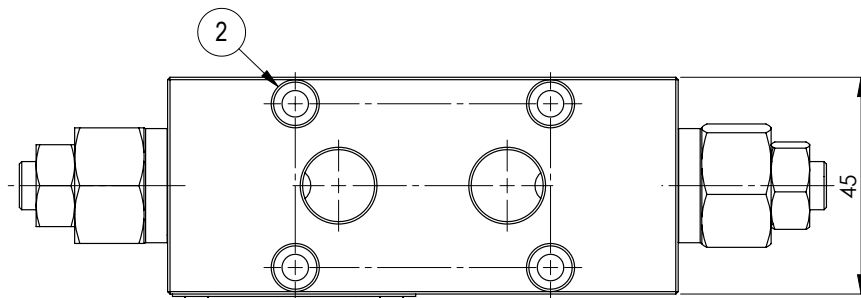


Dimensions in mm



Technical data	
Max. pressure	250 bar
Max. flow	40 lpm
Weight with 1 valve	0,9 Kg
Weight with 2 valves	1 Kg
Manifold material	Aluminum
Bottom and top A / B ports	3/8" G



N°	Description	Q.ty
1	Bosch Rexroth unidirectional flow restrictor STVU-08A * depicted with screw adjustment	1/2
2	Ø 5,5 through hole with counterbore for mounting	4

* for complete technical information, click on the blue link or go to the components section at the end of the catalog

Ordering code

H	4	9	0	1	-	-	-	-	-	-
---	---	---	---	---	---	---	---	---	---	---

Hydrover product

Product series

49 series - Flangeable elements for Bosch Rexroth ED bankable valves

Product ID

Manifold material

Aluminum
Steel

= A
= S

Unidirectional flow restrictor on B

SB = Screw
KB = Knob
TB = Without flow restrictor

Unidirectional flow restrictor on A

SA = Screw
KA = Knob
TA = Without flow restrictor

To inhibit one of the flow restrictors, substitute the related options with T: eg. H4901A-TA-SB.
In the cavity it will be mounted a short plug.

Valve	Cavity	Short plug code
Bosch Rexroth unidirectional flow restrictor STVU-08A	CA-08A-2N	R-800-008