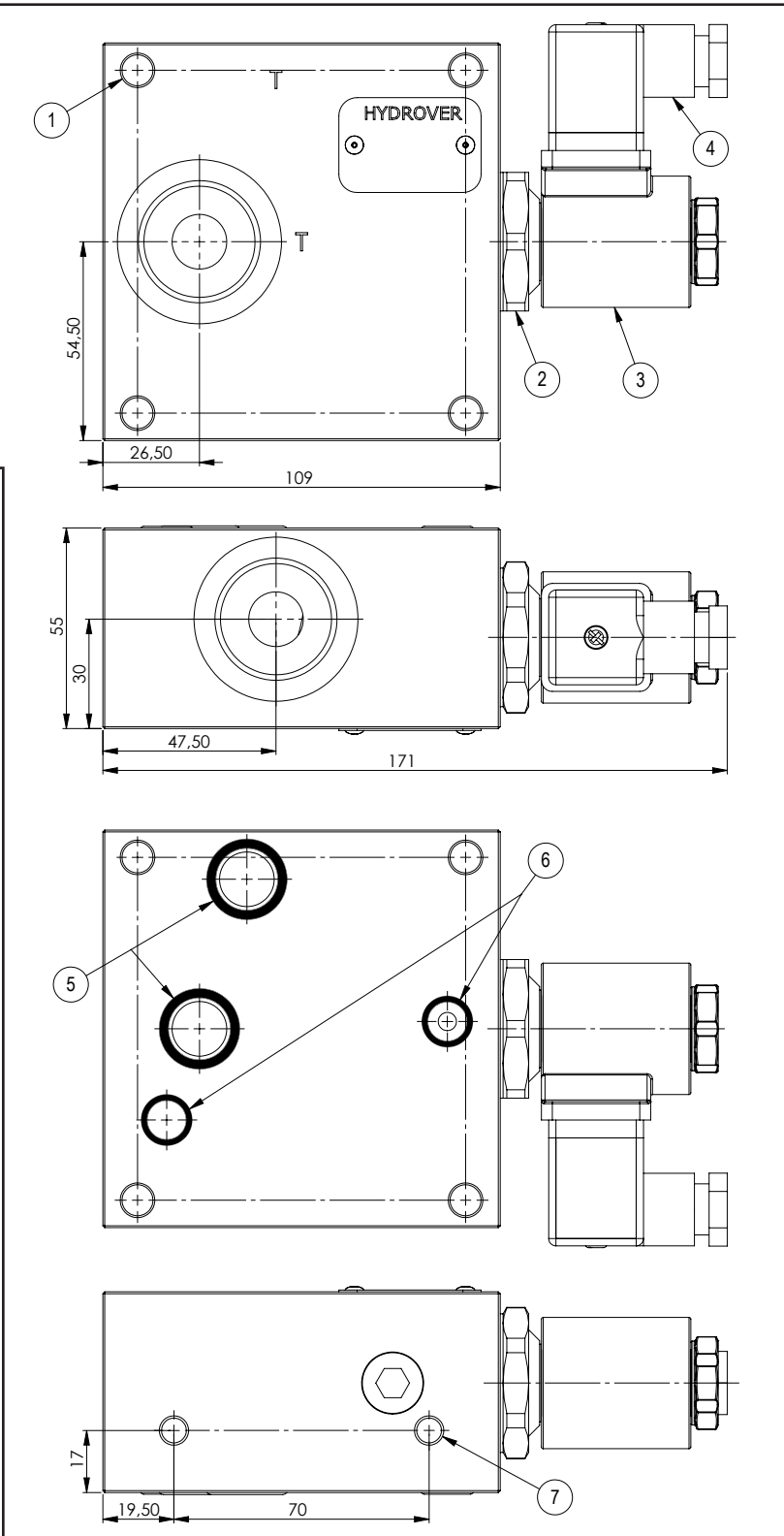
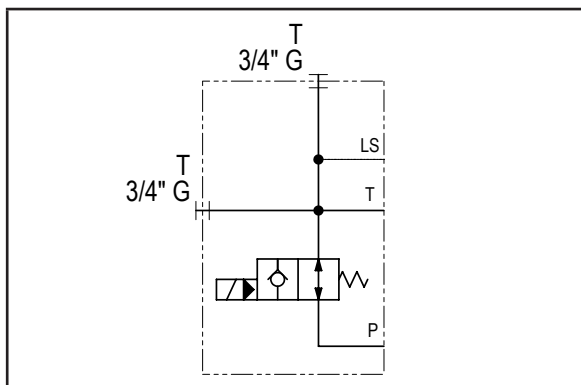
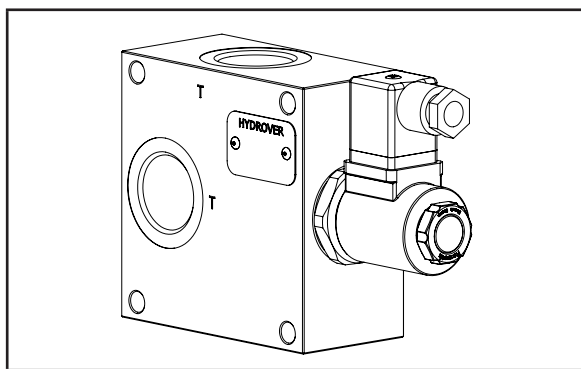


| Technical data    |           |
|-------------------|-----------|
| Max. pressure     | 250 bar   |
| Max. flow         | 120 lpm * |
| Weight            | 2 Kg      |
| Manifold material | Aluminium |
| Ports T/T         | 3/4" G    |



Dimensions in mm

| N° | Description   | Q.ty |
|----|---|------|
| 1  | Ø 8,5 through hole for tie rod  | 4    |
| 2  | Bosch Rexroth solenoid valve <b>VEI-16-021-NA OD.15.06.21-Y-000000</b> depicted without manual override * | 1    |
| 3  | Bosch Rexroth coil <b>D36 - CLASS H DIN 43650 ISO 4400</b> *  | 1    |
| 4  | Connector DIN 43650 ISO 4400  | 1    |
| 5  | OR 3068 i. Ø 17,12 cross section 2,62 (P-T)   | 2    |
| 6  | OR 2043 i. Ø 10,82 cross section 1,78(LS-FS)  | 2    |
| 7  | M8x15 thread for mounting   | 2    |

\* for complete technical information, click on the blue link or go to the components section at the end of the catalogue

Ordering code

|   |   |   |   |   |   |   |   |   |   |   |   |
|---|---|---|---|---|---|---|---|---|---|---|---|
| H | 5 | 2 | 0 | 8 | A | - | - | - | - | - | - |
|---|---|---|---|---|---|---|---|---|---|---|---|

**Hydrover product**

**Product series**

52 series - Load sensing modular  
Cetop 5 subplates  
for parallel circuits

**Product ID**

**Manifold material**

Aluminium

**Bypass solenoid valve coil connection \***

1 = DIN 43650 ISO 4400

**Solenoid valve coil voltage \***

OB = 12V DC  
OC = 24V DC  
OD = 48V DC  
OU = 110V RAC  
AH = 230V RAC

**Bypass solenoid valve manual override \***

E0 = Without  
EP = Push  
EG = Push and twist