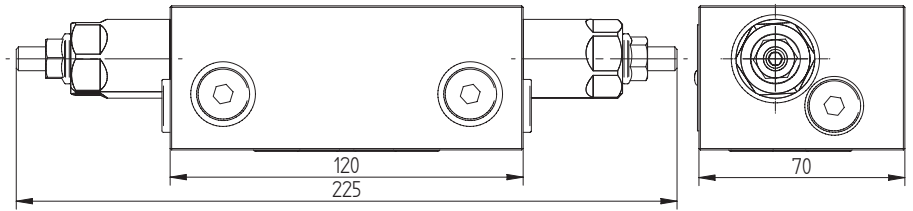
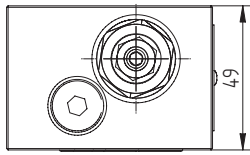
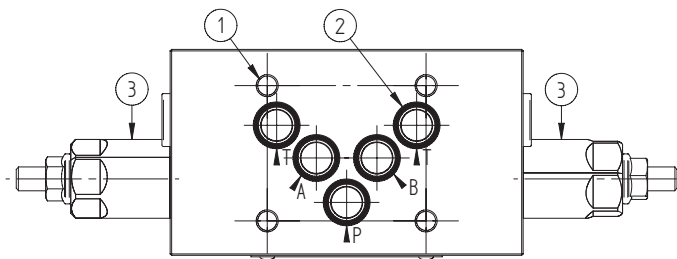
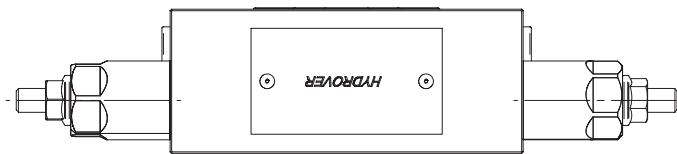
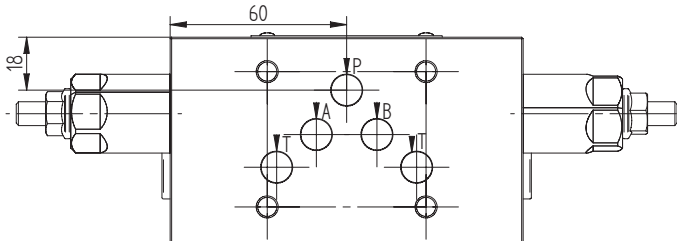
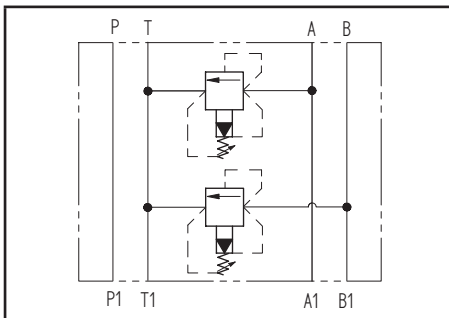


Cetop 5 modular relief valve on A and B **H5901**

Dimensions in mm

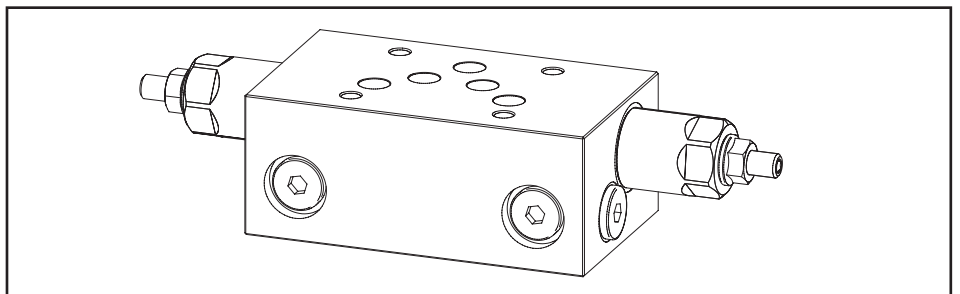


Technical data	
Max. pressure	350 bar
Max. flow	120 lpm
Weight	3 Kg
Manifold material	Steel



N°	Description	Q.ty
1	Ø 6,5 through hole for mounting	4
2	OR 2050 i. Ø 12,42 cross section 1,78	5
3	Bosch Rexroth relief valve VSPN-10A* depicted with screw adjustment	2

** for complete technical information, click on the blue link or go to the components section at the end of the catalogue*



Ordering code

H	5	9	0	1	S	-	-	-	-	-
---	---	---	---	---	---	---	---	---	---	---

Hydrover product

Product series

59 series - Cetop 5 modular valves

Product ID

Manifold material

Steel

Relief valve adjustment pressure range on B *

- 1 = 35-140 bar
- 2 = 70-280 bar
- 3 = 140-420 bar (reg. vite)
- 3 = 35-350 bar (adj. knob)

Relief valve adjustment type on B *

- S = Screw
- K = Knob (solo 35-350 bar)

Relief valve adjustment pressure range on A *

- 1 = 35-140 bar
- 2 = 70-280 bar
- 3 = 140-420 bar
- 3 = 35-350 bar (adj. knob)

Relief valve adjustment type on A *

- S = Screw
- K = Knob

* Omit if not required. To order the product without the pressure relief cartridge valves, omit the pressure range and the adjustment type options: H5901S.
The manifold will still be provided with the corresponding cavities.