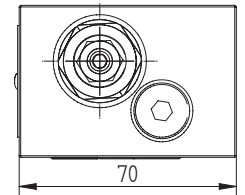
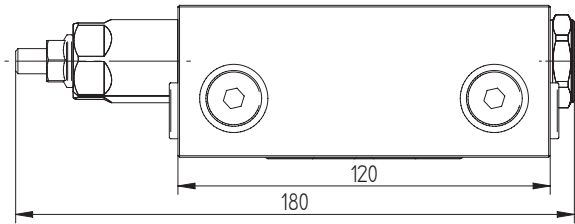
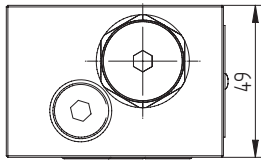
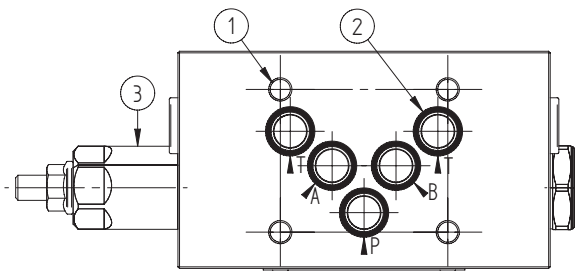
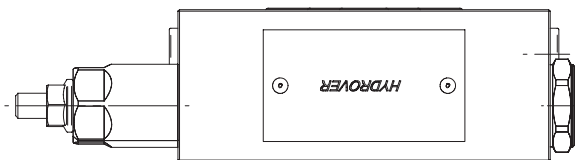
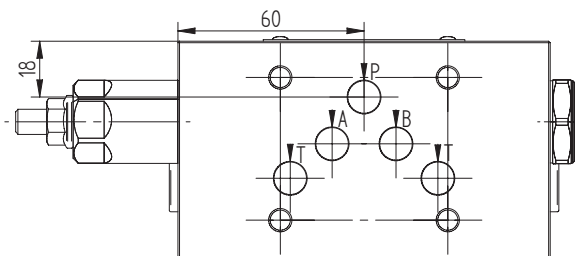
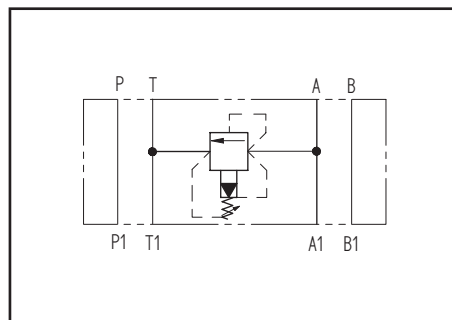


Dimensions in mm

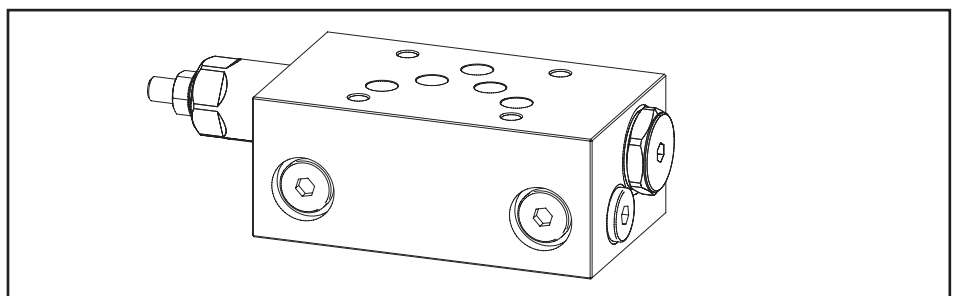


Technical data	
Max. pressure	350 bar
Max. flow	120 lpm
Weight	3 Kg
Manifold material	Steel



N°	Description	Q.ty
1	Ø 6,5 through hole for mounting	4
2	OR 2050 i. Ø 12,42 cross section 1,78	5
3	Bosch Rexroth relief valve <b>VSPN-10A*</b> depicted with screw adjustment	1

*\* for complete technical information, click on the blue link or go to the components section at the end of the catalogue*



Ordering code

H	5	9	0	2	S	-	-	-
---	---	---	---	---	---	---	---	---

**Hydrover product**

**Product series**

59 series - Cetop 5 modular valves

**Product ID**

**Manifold material**

Steel

**Relief valve adjustment pressure range \***

- 1 = 35-140 bar
- 2 = 70-280 bar
- 3 = 140-420 bar
- 3 = 35-350 bar (adj. knob)

**Relief valve adjustment type \***

- S = Screw
- K = Knob

\* Omit if not required. To order the product without the pressure relief cartridge valve, omit the pressure range and the adjustment type options: H5902S.  
The manifold will still be provided with the corresponding cavity.