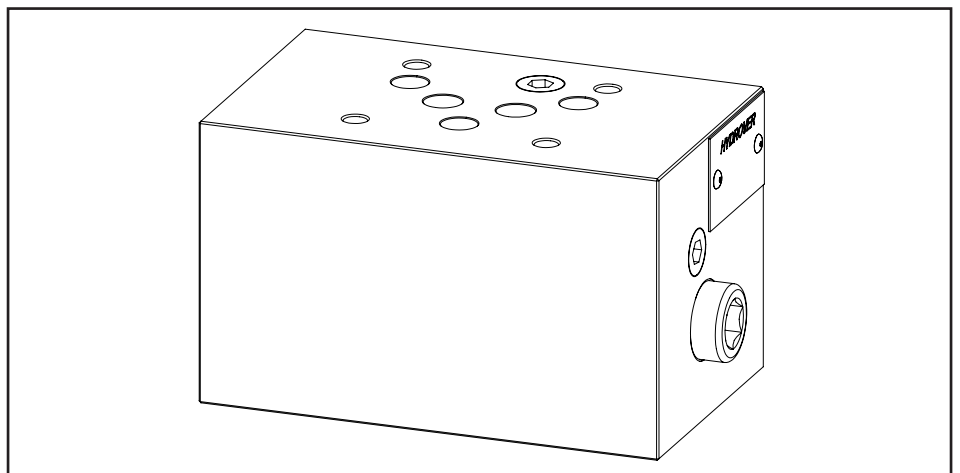
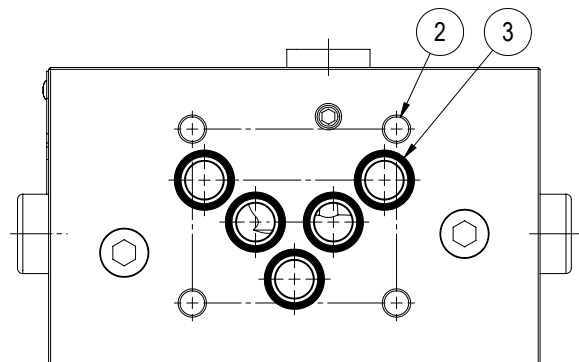
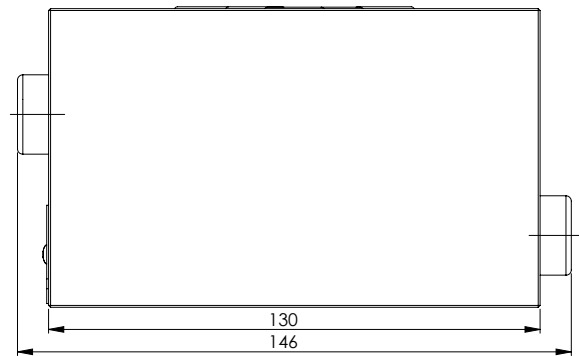
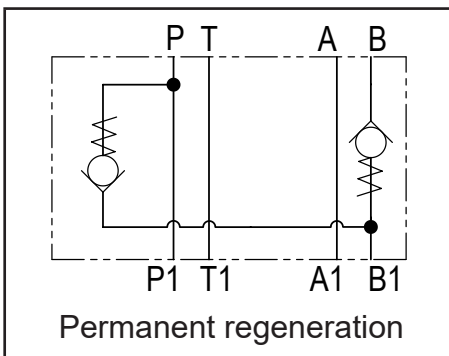
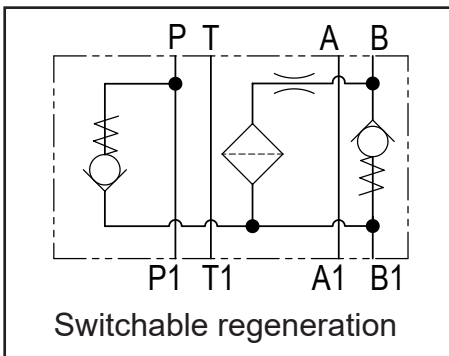


Technical data	
Max. pressure	350 bar
Input max. flow	60 lpm*
Regenerated max. flow	60 lpm*
* The sum of both must not exceed the maximum flow rate allowed by the Cetop 5 solenoid valve.	
Weight	2,2 Kg
Manifold material	Steel



N°	Description	Q.ty
1	Bosch Rexroth check valve VUM1.060	2
2	Ø 6,5 through hole for mounting	4
3	OR 2050 i. Ø 12,42 cross section 1,78	5

Ordering code

H	5	9	0	5	S	-	-	-
---	---	---	---	---	---	---	---	---

Hydrover product

Product series

59 series - Cetop 5 modular valves

Product ID

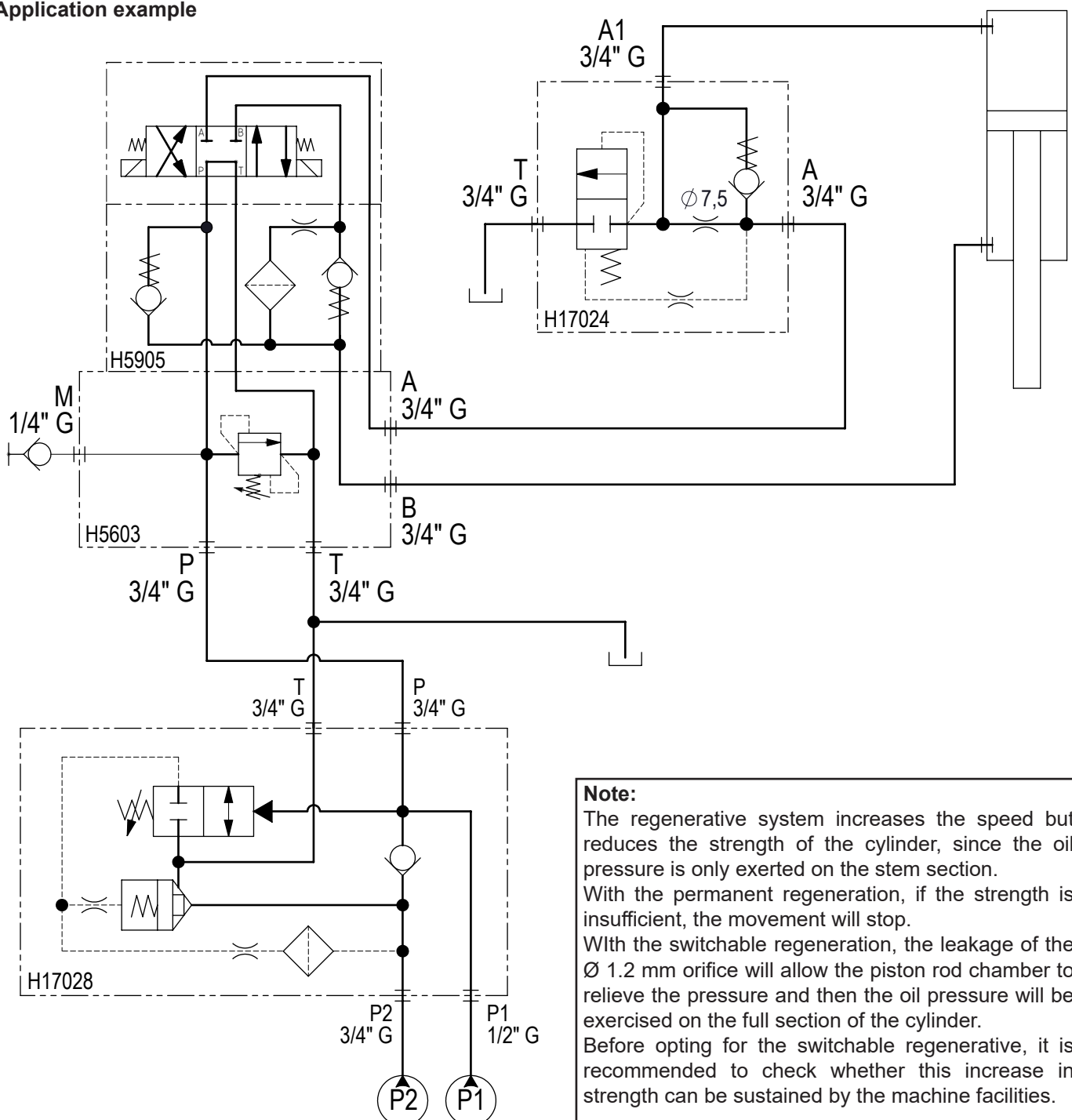
Regeneration type

RP = Permanent regeneration
RE = Switchable regeneration

Manifold material

Steel

Application example



Note:
The regenerative system increases the speed but reduces the strength of the cylinder, since the oil pressure is only exerted on the stem section. With the permanent regeneration, if the strength is insufficient, the movement will stop. With the switchable regeneration, the leakage of the $\phi 1.2$ mm orifice will allow the piston rod chamber to relieve the pressure and then the oil pressure will be exercised on the full section of the cylinder. Before opting for the switchable regenerative, it is recommended to check whether this increase in strength can be sustained by the machine facilities.