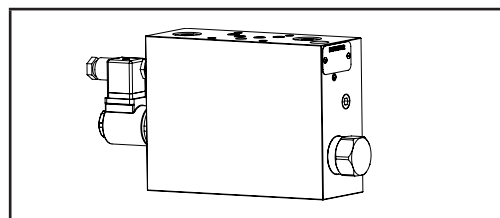
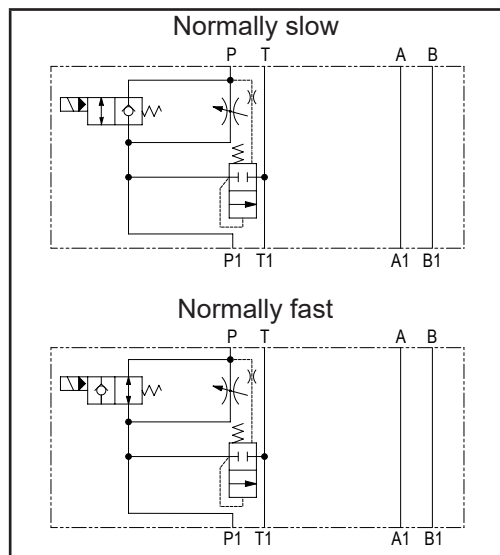


Dimensions in mm

Technical data	
Max. pressure	250 bar
Max. flow ingr. e regolata	50 lpm
Weight	13,4 Kg
Manifold material	Steel



N°	Description	Q.ty
1	Pressure compensator	1
2	Bosch Rexroth bidirectional flow restrictor <b>OD.21.01-X-04</b> * depicted with screw adjustment	1
3	Bosch Rexroth solenoid valve for fast slow function <b>VEI-16-021-NC OD.15.05.21-Y-000000</b> * (normally slow) o <b>VEI-16-021-NA OD.15.06.21-Y-000000</b> * (normally fast)	1
4	Bosch Rexroth coil <b>D36</b> - CLASS H DIN 43650 ISO 4400 *	1
5	Connector DIN 43650 ISO 4400	1
6	Ø 6,5 through hole for mounting	4
7	OR 2050 i. Ø 12,42 cross section 1,78	5

\* for complete technical information, click on the blue link or go to the components section at the end of the catalogue

**H5908**

Ordering code

H 5 9 0 8 S \_ \_ Q - \_ \_ - \_ \_ - \_ \_

**Hydrover product**

**Product series**

59 series - Cetop 5 modular valves

**Product ID**

**Manifold material**

Steel

**Compensator spring**

Molla 5.5 bar (standard) = 6  
 Molla 12.5 bar = 1  
 Molla 19 bar = 2

**Flow regulator adjustment type**

Screw = S  
 Knob = K

**Fast slow solenoid valve**

**coil connection \***

1 = DIN 43650  
 ISO 4400

**Solenoid valve coil voltage \***

OB = 12V DC  
 OC = 24V DC  
 OD = 48V DC  
 OU = 110V RAC  
 AH = 230V RAC

**Fast slow solenoid valve manual override \***

E0 = Without  
 EP = Push (NR)  
 EV = Screw (NL)  
 EG = Push and twist (NR)

**Slow or fast in normal position \***

NL = Normally slow  
 NR = Normally fast

\* Omit if not required. To order the product without the fast slow solenoid cartridge valve, omit the slow or fast in normal position, manual override, coil voltage and coil connection options: eg. H5908S1SQ.  
 The manifold will still be provided with the corresponding cavity.  
 To inhibit the fast slow speed function, replace the related solenoid valve options with TL: eg H5908S1SQ-TL.  
 In the cavity it will be mounted a long plug.

Valve	Cavity	Long plug code
Solenoid valve VEI-16-021-NC OD.15.05.21-Y-000000 / VEI-16-021-NA OD.15.06.21-Y-000000	021-E	R-800-015