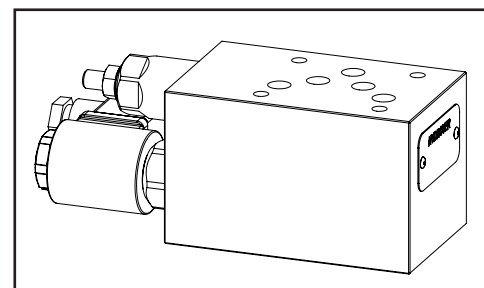
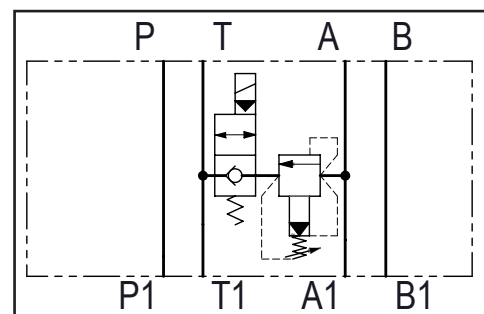


Dimensions in mm

| Technical data | |
|-------------------|-----------|
| Max. pressure | 250 bar |
| Max. flow | 70 lpm |
| Weight | 1,9 Kg |
| Manifold material | Aluminium |



| N° | Description | Q.ty |
|----|--------------------------------------------------------------------------------------------------------------------------------------------------------|------|
| 1 | Connector DIN 43650 ISO 4400 | 1 |
| 2 | Bosch Rexroth relief valve VSPN-10A* depicted with screw adjustment | 1 |
| 3 | Bosch Rexroth coil D36 - CLASS H DIN 43650 ISO 4400 * | 1 |
| 4 | Bosch Rexroth solenoid valve VEI-16-10A-NC OD.15.05.36-Y-000000 or VEI-16-10A-NA OD.15.06.36-Y-000000 depicted without manual override * | 1 |
| 5 | Ø 6,5 through hole for mounting | 4 |
| 6 | OR 2050 i. Ø 12,42 cross section 1,78 | 5 |

* for complete technical information, click on the blue link or go to the components section at the end of the catalogue

Ordering code

H 5 9 2 1 A - - - - - - - - - -

Hydrover product

Product series
59 series - Cetop 5 modular valves

Product ID

Manifold material
Aluminium

Relief valve adjustment type *

Screw = S
Knob = K

Relief valve adjustment pressure range *

35-140 bar = 1
70-280 bar = 2
140-420 bar = 3
35-350 bar (adj. knob) = 3

Solenoid valve coil connection *

1 = DIN 43650
ISO 4400

Solenoid valve coil voltage *

OB = 12V DC
OC = 24V DC
OD = 48V DC
OV = 24V RAC
OU = 110V RAC
AH = 230V RAC

Solenoid valve manual override *

E0 = Without
EP = Push (NA, 2A)
EV = Screw (NC, 2C)
EG = Push and twist (NA, 2A)

Solenoid valve spool type *

NA = Normally open
NC = Normally closed

* Omit if not required. For example to order the product without the relief cartridge valve, omit the pressure range and adjustment type options: eg. H5921A-NC-E0-OC1.
The manifold will still be provided with the corresponding cavity.