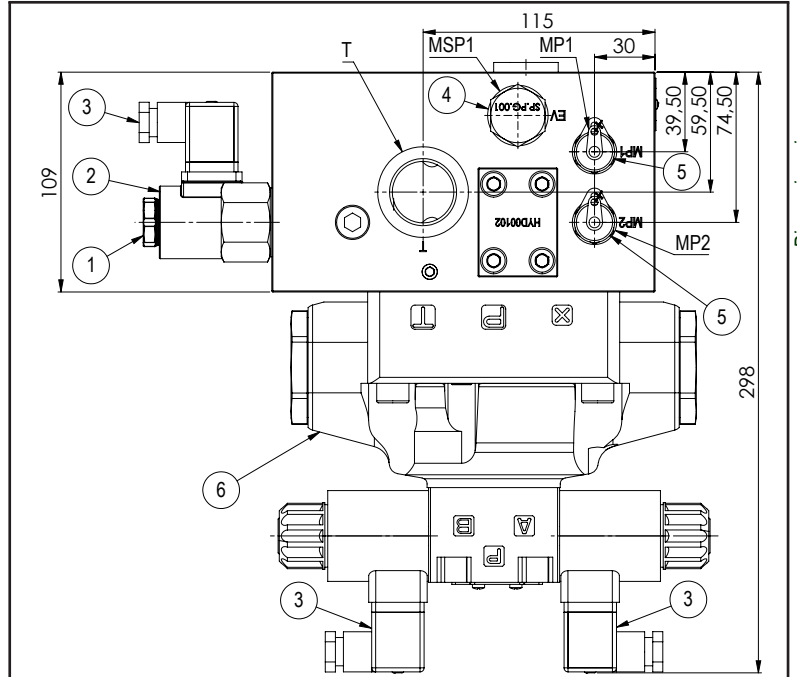
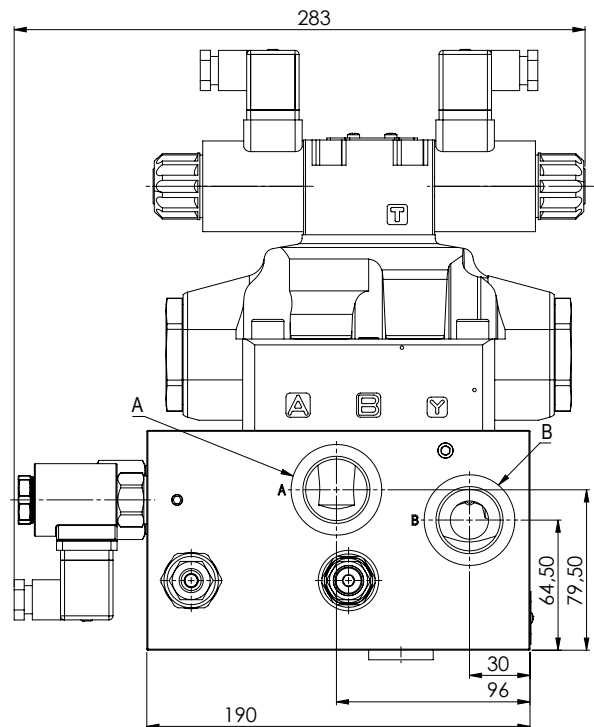
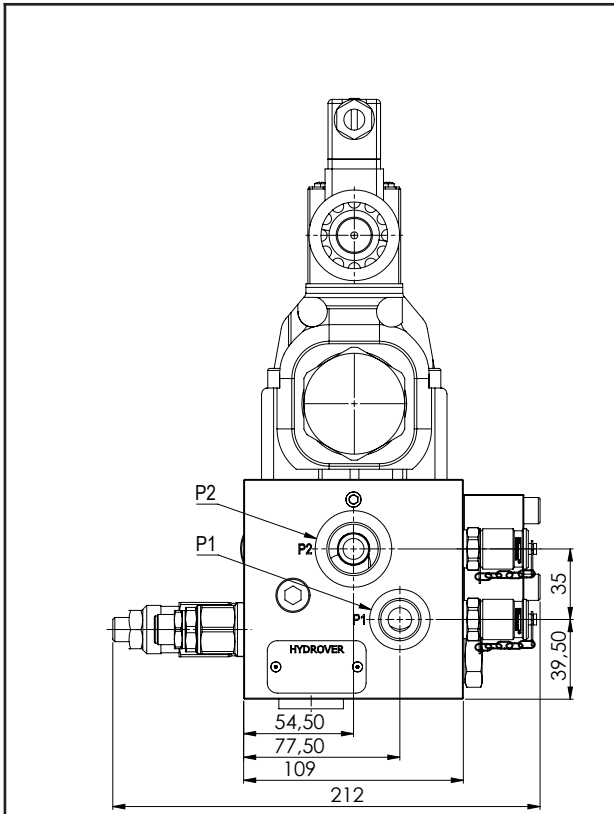
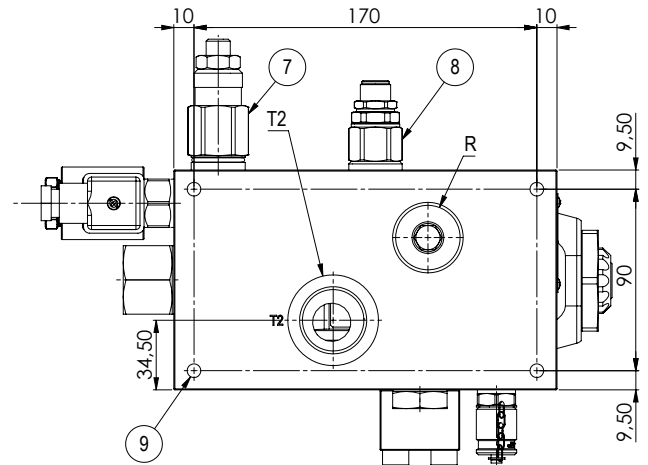
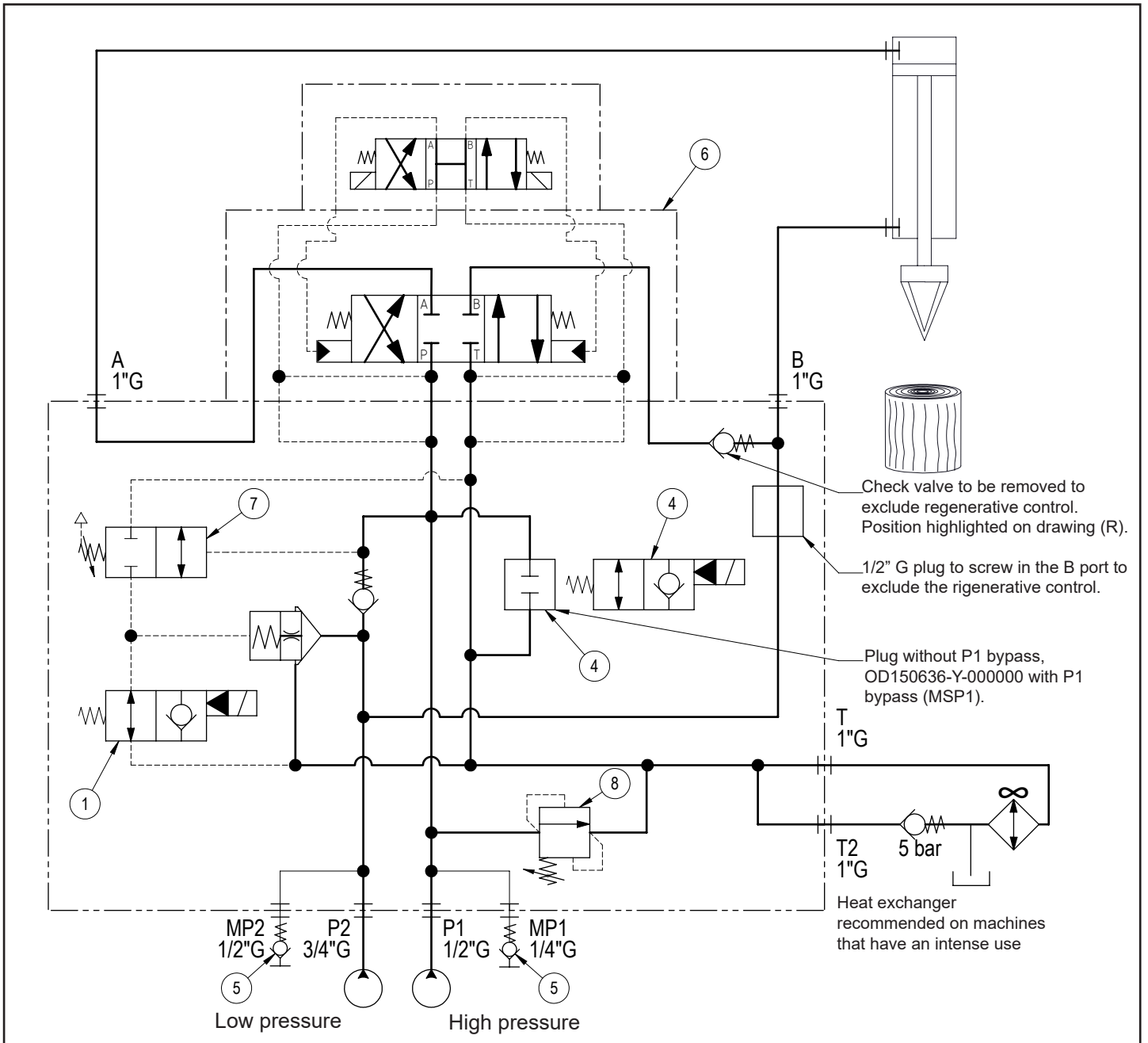


Technical data	
Max. pressure	350 bar
P1 max. flow	25 lpm without MSP1 60 lpm with MSP1 *
P2 max. flow	100 lpm **
Weight	26 Kg
Manifold material	Steel
MP1 / MP2 ports	1/4" G
P1 port	1/2" G
P2 port	3/4" G
A / B / T1 / T2 ports	1" G
* Depending of the system power	
** Depending of the cylinder dimensions and the system power	



Dimensions in mm





Ordering code



Hydrover product

Product series
97 series - Multifunctional integrated circuits

Product ID

Manifold material
Steel

Rigenerative control
Switchable = E
No = 0

P2 unloading valve adjustment type
Screw = S

P2 unloading valve adjustment pressure range
14-70 bar = 2
70-210 bar = 4

Solenoid valves coil connection
1 = DIN 43650
ISO 4400

Solenoid valves coil voltage *
OB = 12V DC
OC = 24V DC
OU = 110V RAC
AH = 230V RAC

Manual override unloading solenoid valve on P2
E0 = Without
EP = Push
EG = Push and twist

Unloading solenoid valve on P1 / manuale override
TL = Without valve (with plug)
E0 = With valve without override
EP = With valve with push override
EG = With valve with push and twist override

Dimensions in mm

N°	Description	Q.ty
1	Bosch Rexroth solenoid valve VEI-16 OD.15.06.18-Y-000000 depicted without manual override *	1
2	Bosch Rexroth coil D36 - CLASS H DIN 43650 ISO 4400 *	1
3	Connector DIN 43650 ISO 4400	3
4	SP.PG.001 (depicted) o Bosch Rexroth unloading solenoid valve on P1 VEI-16-10A-NA OD.15.06.36-Y-000000 * with Bosch Rexroth D36 coil - CLASS H DIN 43650 ISO 4400 *	1
5	1/4"G test coupling	2
6	Pilot operated distributor	1
7	P2 unloading valve	1
8	Relief valve HCMM03-S3 50-350 bar	1
9	M10x15 for mounting	4

* for complete technical information, click on the blue link or go to the components section at the end of the catalogue