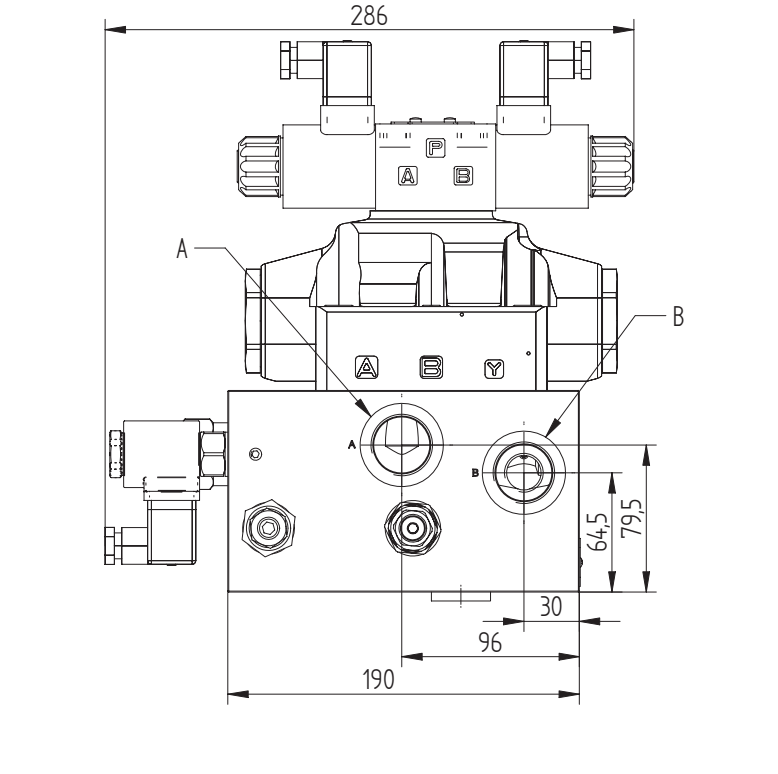
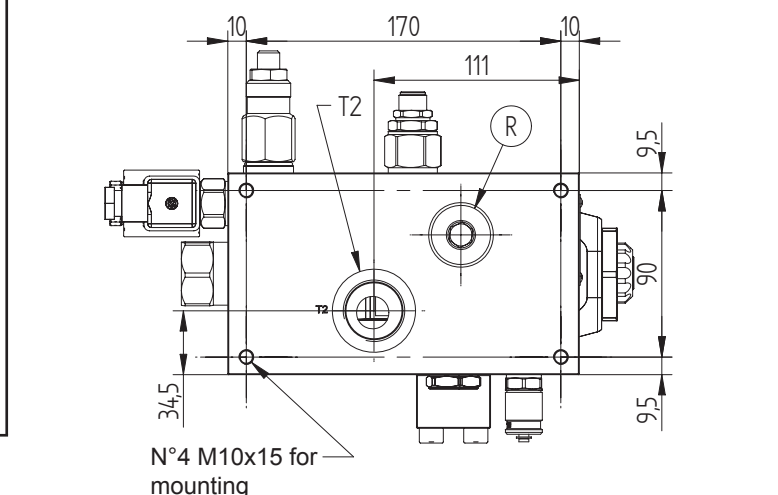
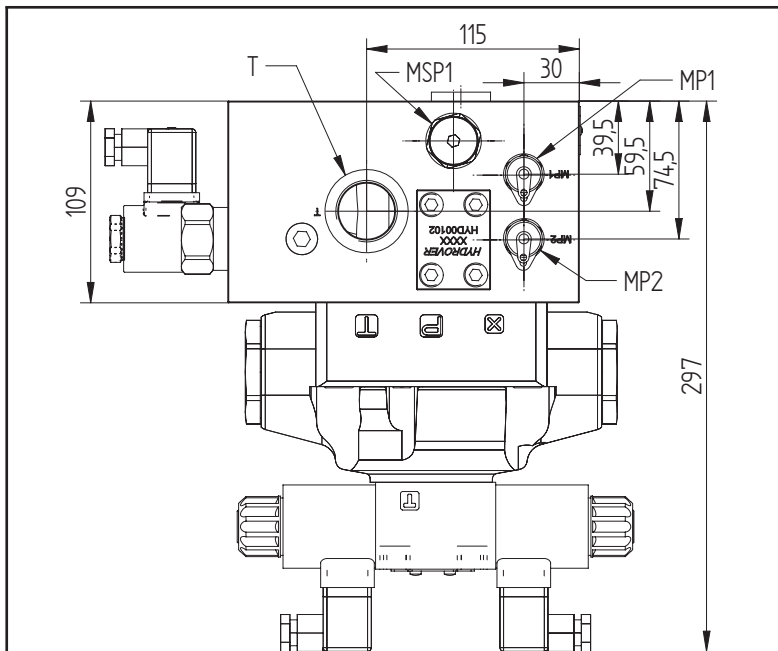
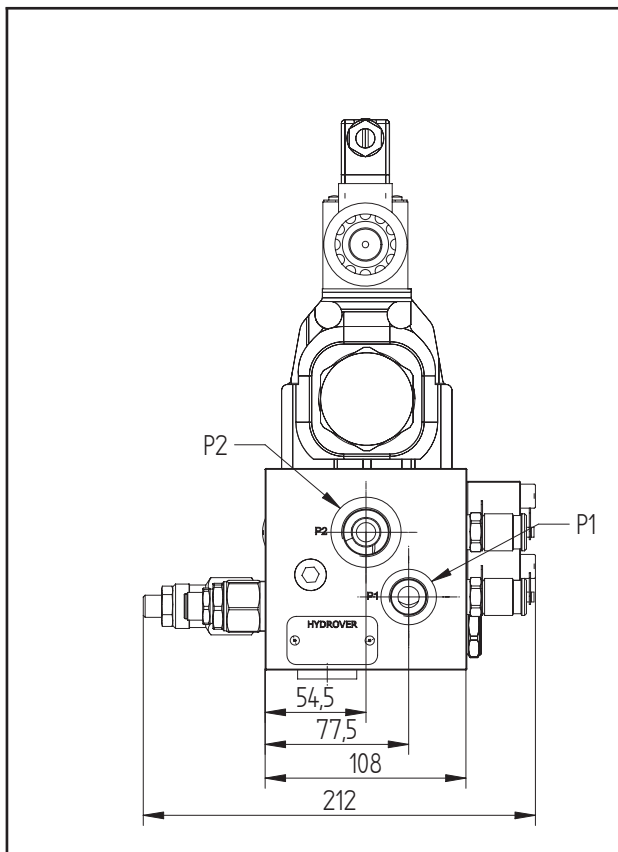


Technical data	
Max. pressure	280 bar
P1 max. flow	30 lpm *
P2 max. flow	100 lpm **
Weight	25,7 Kg
Manifold material	Steel
MP1 / MP2 ports	1/4" G
P1 port	1/2" G
P2 port	3/4" G
A / B / T1 / T2 ports	1" G
* Depending of the system power	
** Depending of the cylinder dimensions and the system power	



Dimensions in mm

Ordering code

H 9 7 0 0 9 S - - -

Hydrover product

Product series

97 series - Multifunctional integrated circuits

Product ID

Manifold material
Steel

Solenoid valves coil connection
1 = DIN 43650 ISO 4400

Solenoid valves coil voltage *
OB = 12V DC
OC = 24V DC
OU = 110V RAC
AH = 230V RAC

