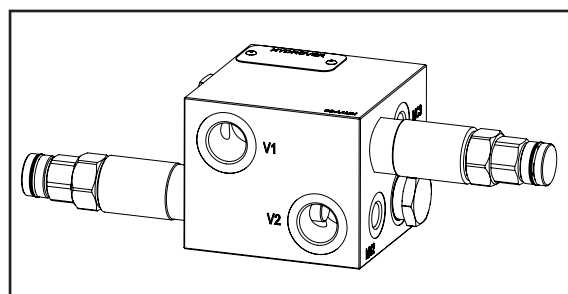
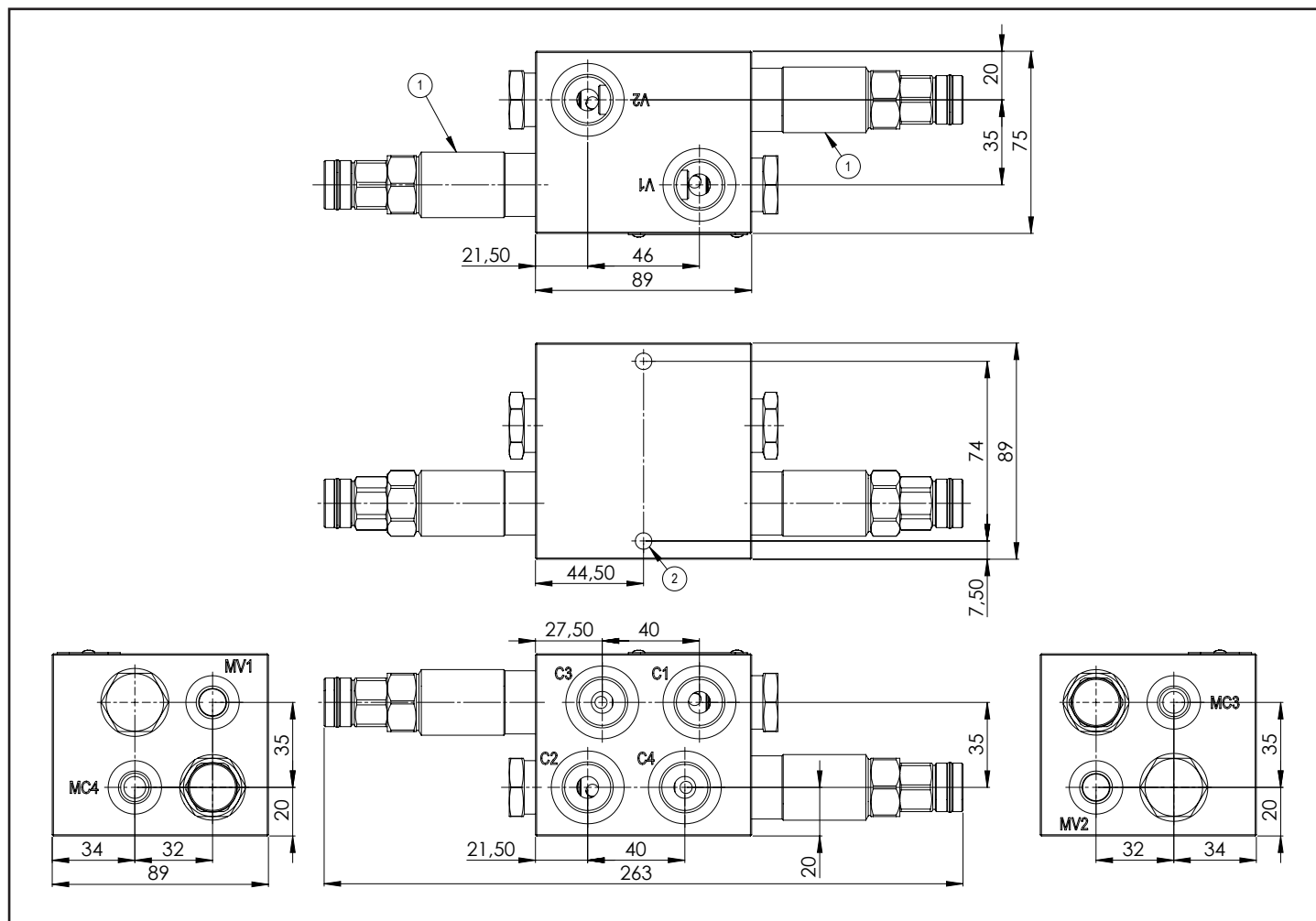
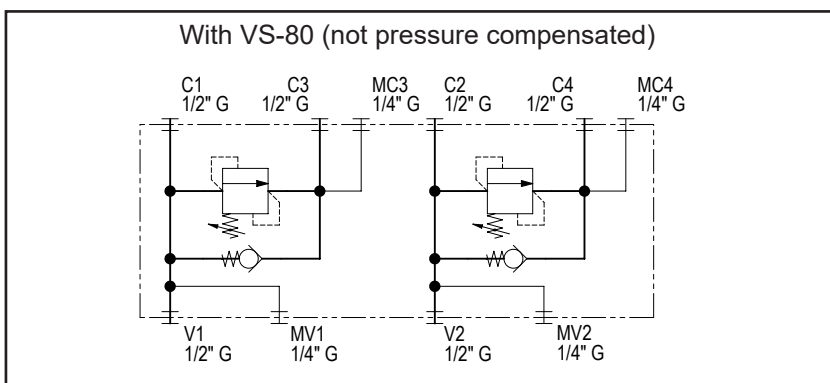
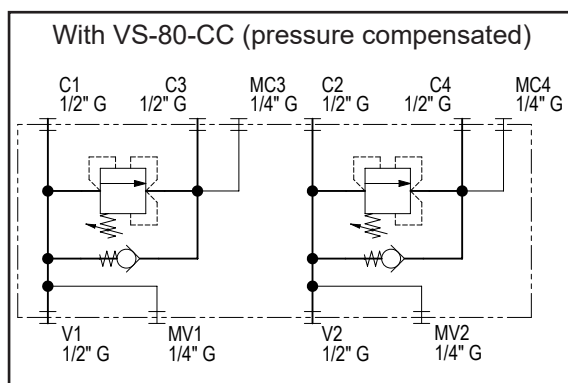


Integrated circuit with two sequence circuits 1/2" G **H97063**

Dimensions in mm



Technical data	
Max. pressure	250 bar
Max. flow per circuit	80 lpm *
Weight	3 Kg
Manifold material	Aluminium
MV1 / MV2 / MC2 / MC4 ports	1/4" G
V1 / V2 / C1 / C2 / C3 / C4 ports	1/2" G



N°	Description	Q.ty
1	Sequence valve VS-80-CC * (as depicted) or Bosch Rexroth relief valve <b>VS-80</b> *	2
2	M8x15 thread for mounting	2

\* for complete technical information, click on the blue link or go to the components section at the end of the catalogue

Ordering code

H 9 7 0 6 3 A - - - - -

**Hydrover product**

**Product series**

97 series - Multifunctional integrated circuits

**Product ID**

**Manifold material**

Aluminium

**Adjustment type for valve on V1\***

Screw = S  
Knob (only for VS-80) = K

**Pressure range adjustment for valve on V1 \***

**VS-80-CC**  
5-50 bar = 0  
25-100 bar = 1  
60-210 bar = 2  
100-350 bar = 3  
**VS-80**  
5-50 bar = 0  
30-100 bar = 1  
80-250 bar = 2  
140-350 bar = 3

**V2 valve type \***

S = VS-80-CC  
M = VS-80

**Pressure range adjustment for valve on V2 \***

**VS-80-CC**  
0 = 5-50 bar  
1 = 25-100 bar  
2 = 60-210 bar  
3 = 100-350 bar  
**VS-80**  
0 = 5-50 bar  
1 = 30-100 bar  
2 = 80-250 bar  
3 = 140-350 bar

**Adjustment type for valve on V2\***

S = Screw  
K = Knob (only for VS-80)

**V1 valve type \***

S = VS-80-CC  
M = VS-80

\* Omit if not required. To order the product without valves, omit their options: H97063A.  
The manifold will still be provided with the corresponding cavities.

