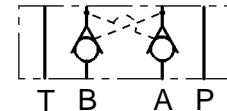




# LC04M VR

**Valvole modulari di ritegno semplici e pilotate**

*Modular direct and pilot operated check valves*



## CARATTERISTICHE TECNICHE

**Grandezza: NG4 CETOP RP 121 H-4.2- 4 P02 (CETOP 2)**

**Portata massima: 20 l/min**

**Pressione massima d'esercizio: 310 bar**

**Rapporto di pilotaggio: 2,8:1**

## TECHNICAL CHARACTERISTICS

**Size: NG4 CETOP RP 121 H-4.2- 4 P02 (CETOP 2)**

*Max flow: 20 l/min*

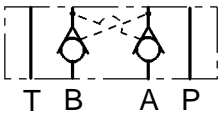
*Max operating pressure: 310 bar*

*Pilot ratio: 2,8:1*

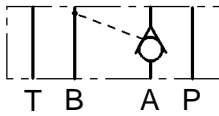


# TIPI DI VALVOLE • VALVES TYPES

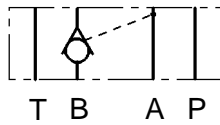
### AB



### 0A



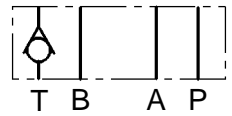
### 0B



### 0P

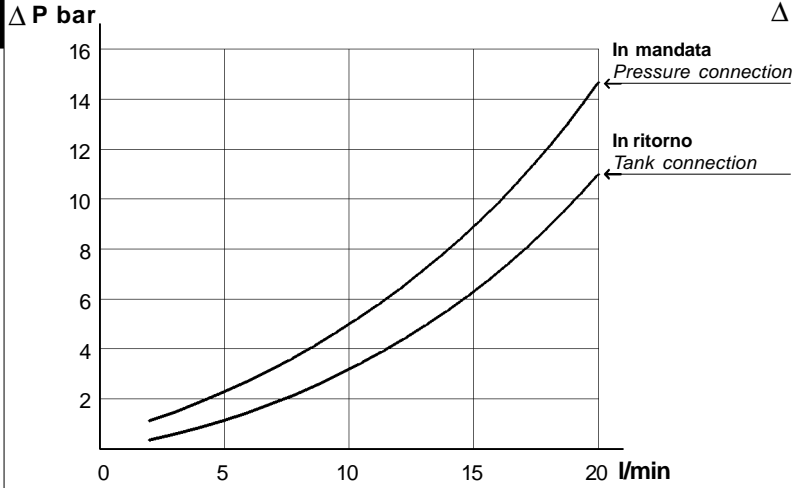


### 0T

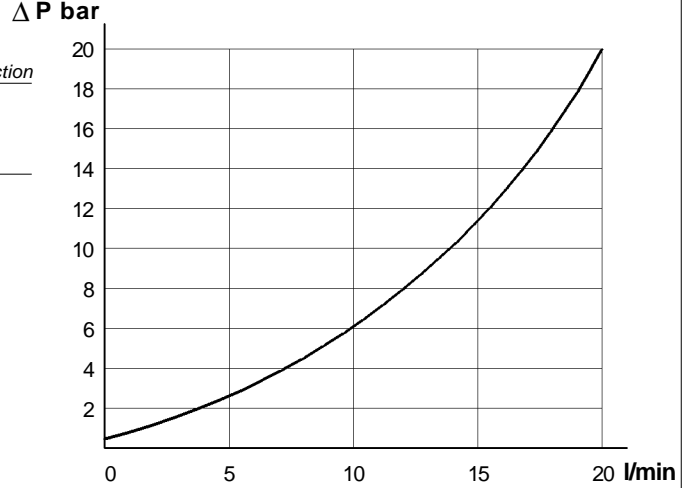


## CARATTERISTICHE TECNICHE • TECHNICAL FEATURES

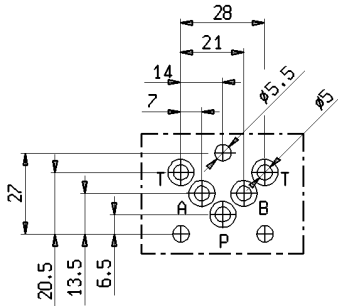
### VR/AB



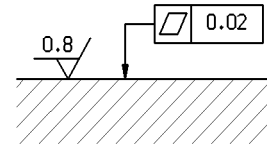
### VR/P VR/T



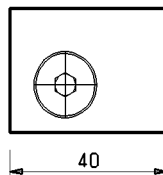
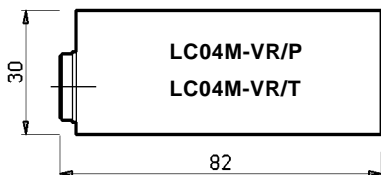
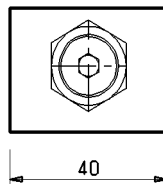
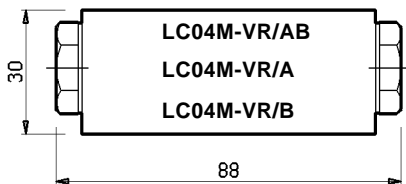
## GRANDEZZA • SIZE : NG4 CETOP RP 121H- 4.2- 4 P02 (CETOP 2)



Qualità superficie di attacco  
Mounting plane quality



## DIMENSIONI DI INGOMBRO • OVER-ALL DIMENSIONS



Peso  
Weight

LC04M-VR/AB 0,65 kg

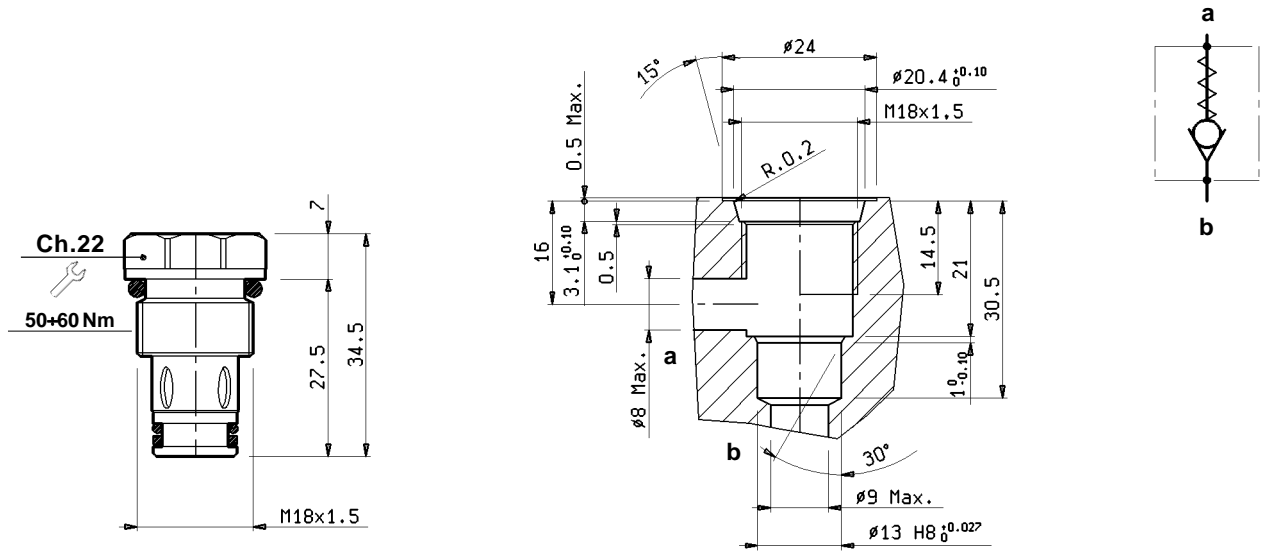
LC04M-VR/A 0,65 kg

LC04M-VR/B 0,65 kg

LC04M-VR/P 0,59 kg

LC04M-VR/T 0,59 kg

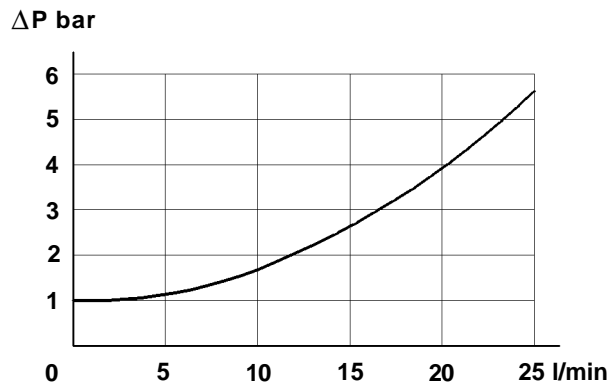
**VALVOLA UNIDIREZIONALE A CARTUCCIA • UNI-DIRECTIONAL CARTRIDGE VALVE**



Tipo Type	Diam. nominale di passaggio Ø Size mm	Portata Max. Max. flow l/min	Pressione Max. Max. pressure bar	Pressione di apertura Cracking pressure bar	Cavità Cavity n°	Peso Weight kg
<b>VU4</b>	6	25	310	1	14	0,050

**CARATTERISTICHE TECNICHE • TECHNICAL FEATURES**

**Diagramma caduta di pressione della cartuccia**  
*Cartridge pressure drop diagram*



**CODICE DI ORDINAZIONE • ORDERING CODE**

**L 6 0 4 0 0 0 W 0 1 0 0 Z**

<b>W</b>	<b>TIPI DI VALVOLE VALVES TYPE</b>
<b>AB</b>	LC04M-VR/AB
<b>0A</b>	LC04M-VR/A
<b>0B</b>	LC04M-VR/B
<b>0P</b>	LC04M-VR/P
<b>0T</b>	LC04M-VR/T

<b>Z</b>	<b>VERSIONE VERSION</b>
<b>00</b>	STANDARD
<b>0V</b>	GUARNIZIONI IN VITON SEALS IN VITON