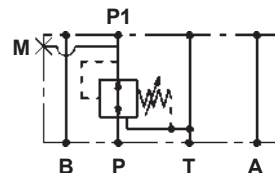
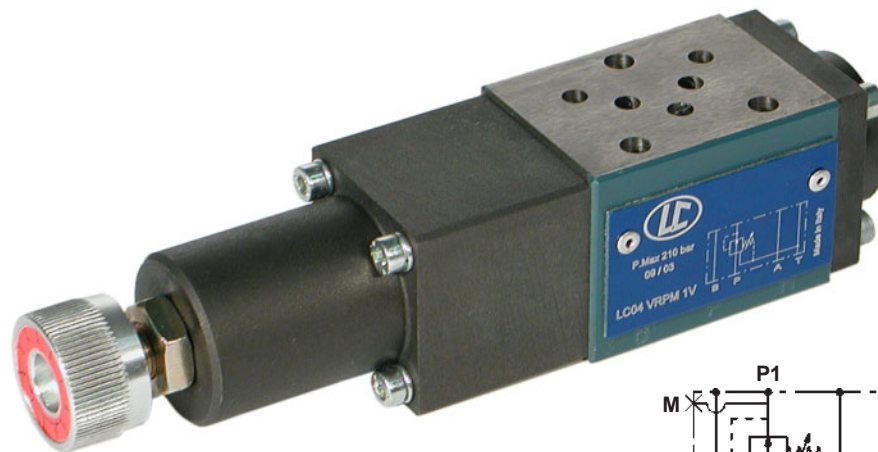




LC04M VRPM

Valvole modulari riduttrici di pressione
Modular pressure reducing valves



CARATTERISTICHE TECNICHE

Grandezza: NG4 CETOP RP 121 H- 4.2- 4 P02 (CETOP 2)

Portata massima : 10 l/min

Pressione massima in entrata: 210 bar

Pressione controllata in uscita: 5÷210 bar

Valvole riduttrici di pressione agenti su P

TECHNICAL CHARACTERISTICS

Grandezza: NG4 CETOP RP 121 H- 4.2- 4 P02 (CETOP 2)

Max flow : 10 l/min

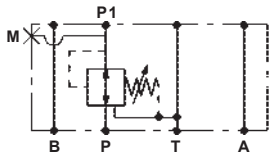
Inlet max pressure: 210 bar

Controlled pressure at outlet port: 5 to 210 bar

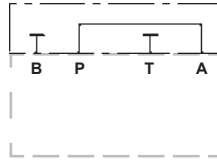
Pressure reducing valves acting on P

TIPI DI VALVOLE • VALVES TYPES

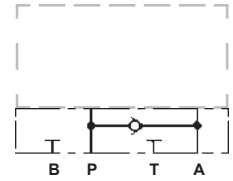
LC04M-VRPM /IP
Drenaggio interno in T
Internal drain to T



LC04PR1

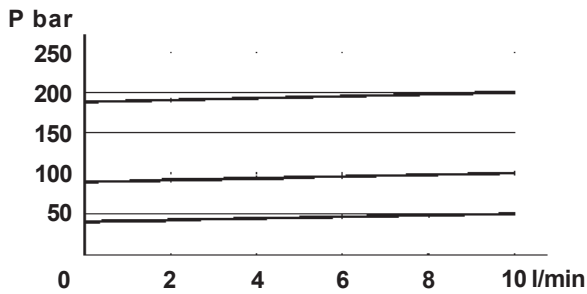


LC04PR2



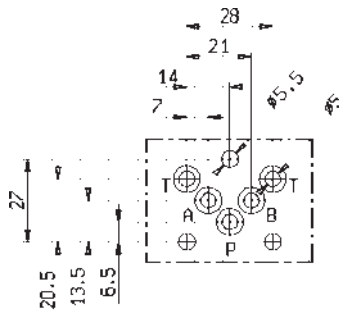
CARATTERISTICHE TECNICHE • TECHNICAL FEATURES

Pressione ridotta
Reduced pressure

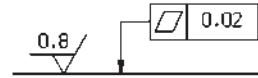


X		Campo di taratura <i>Pressure range</i>	Peso <i>Weight</i>
Tipo (regolazione a volantino) <i>Type</i> (knob adjustment)	Tipo (regolazione a vite) <i>Type</i> (screw adjustment)		
1K	1S	5 ÷ 40 bar	1.0 kg
2K	2S	10 ÷ 100 bar	
3K	3S	20 ÷ 210 bar	

GRANDEZZA • SIZE : NG4 CETOP RP 121H- 4.2- 4 P02 (CETOP 2)

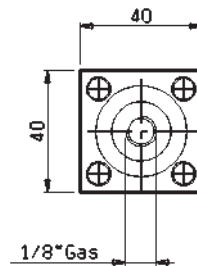
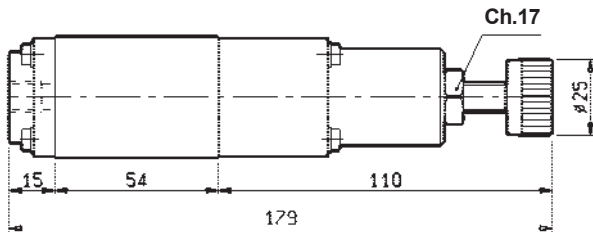


Qualità superficie di attacco
Mounting plane quality

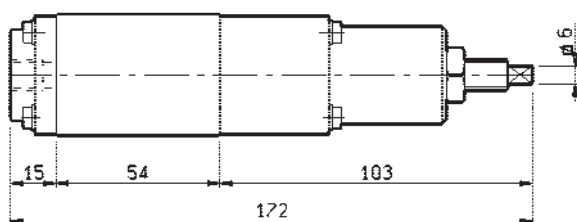


DIMENSIONI DI INGOMBRO • OVER-ALL DIMENSIONS

K = Valvola con taratura a volantino
Knob adjustment



S = Valvola con taratura a chiave
Screw adjustment

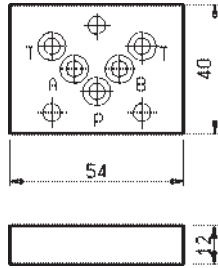


DIMENSIONI DI INGOMBRO PIASTRE • PLATES OVER-ALL DIMENSIONS

LC04PR1

Piastra di collegamento
Connection sub-plate

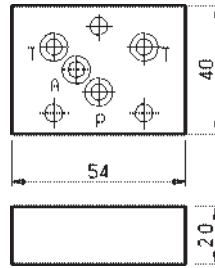
P → A



LC04PR2

Piastra con ritegno da
Sub-plate with check valve from

A → P



Codice Code	Peso Weight
LC04PR1	0.20 kg
LC04PR2	0.35 kg

CARATTERISTICHE DI FUNZIONAMENTO • SPECIFICATIONS

Le valvole LC04M-VRPM, sono da impiegare quando in un circuito si vuole ottenere una riduzione costante di pressione.

Eventuali aumenti di pressione sull'entrata "P" non hanno influenza sulla pressione ridotta "P1".
LC04M-VRPM pressione ridotta su utilizzo "P1".

*The valves LC04M-VRPM must be used when in a circuit a constant reduced pressure is needed.
Possible pressure increase on the inlet "P" Line do not influence the reduced pressure "P1".
LC04M-VRPM reduced pressure on port "P1".*

CODICE DI ORDINAZIONE • ORDERING CODE

L 6 0 6 3 0 1 | IP X 0 0 | Z

X	REGOLAZIONE ADJUSTMENT
--	VEDI PAGINA 1.90.02 SEE PAGE 1.90.02

Z	VERSIONE VERSION
00	STANDARD STANDARD
0V	GUARNIZIONI IN VITON SEALS IN VITON