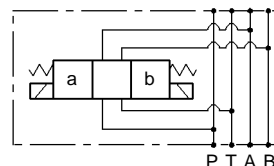




LC1MC AZ - LC1MCT AZ LC1MC DZ - LC1MCT DZ

Elettrovalvole modulari dirette controllo direzione
Modular solenoid operated directional valves



CARATTERISTICHE TECNICHE

Grandezza: NG6 ISO 4401 - 03 CETOP RP121 H-03 (CETOP 3)

LC1MC AZ / LC1MCT AZ CORRENTE ALTERNATA: Portata massima : 50 l/min
Pressione massima d'esercizio su A-B-P: 250bar
Pressione massima in T: dinamica=160 bar - statica=180 bar

LC1MC DZ / LC1MCT DZ CORRENTE CONTINUA: Portata massima : 50 l/min
Pressione massima d'esercizio su A-B-P: 310bar
Pressione massima in T: dinamica=250 bar - statica=310 bar

TECHNICAL CHARACTERISTICS

Size: NG6 ISO 4401 - 03 CETOP RP121 H-03 (CETOP 3)

LC1MC AZ / LC1MCT AZ AC VERSION: Max flow : 50 l/min
Max operating pressure on A-B-P: 250bar
Max pressure in T: dynamic=160 bar - static=180 bar

LC1MC DZ / LC1MCT DZ DC VERSION: Max flow : 50 l/min
Max operating pressure on A-B-P: 310bar
Max pressure in T: dynamic=250 bar - static=310 bar

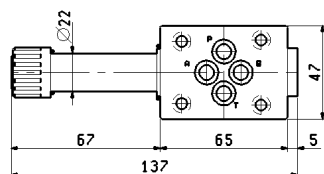


TIPI DI CIRCUITI • SPOOL TYPES

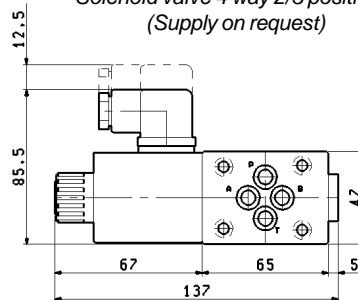
Nuovo codice <i>New code</i>	Vecchio codice <i>Old code</i>	Simbolo <i>Circuit</i>	Direzione del flusso durante il passaggio al centro <i>Oil direction during shift</i>	Portata Max <i>Max flow</i>				Pressione Max <i>Max pressure</i>			
				l/min				bar			
				MCAZ	MCTAZ	MCDZ	MCTDZ	MCAZ	MCTAZ	MCDZ	MCTDZ
Y301	A11C			50		50		250		310	
A301	A11S			50		50		250		310	
A361	A14S			50		50		250		310	
B301	B11C				50		50	250		310	
N301	N11C			50		50		250		310	
T301	T11C			50		50		250		310	
Y104	A12C			50		50		250		310	
B471	B12C				50		50	250		310	
N401	N12C			50		50		250		310	
T409	T12C			50		50		250		310	
B201	B2			50		50		250		310	

DIMENSIONI DI INGOMBRO • OVER-ALL DIMENSIONS

Elettrovalvola 4 vie 2/3 posizioni.
(Fornitura standard)
Solenoid valve 4 way 2/3 positions.
(Standard supply)

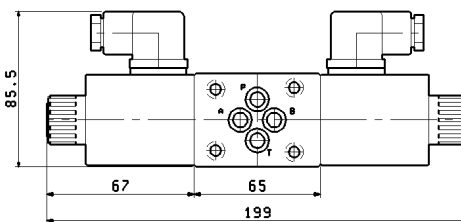
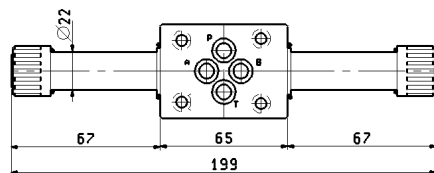


Elettrovalvola 4 vie 2/3 posizioni.
(Fornitura su richiesta)
Solenoid valve 4 way 2/3 positions.
(Supply on request)

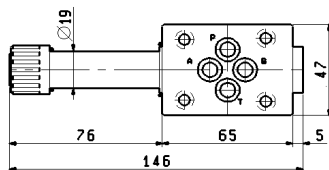


TIPO
TYPE:
LC1MC AZ
LC1MCT AZ

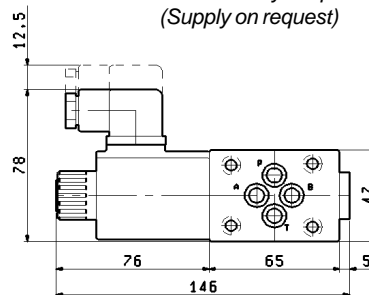
Pesi Weights	
Elettrovalvola con 1 solenoide: With 1 solenoid :	1.25 kg
Elettrovalvola con 2 solenoidi: With 2 solenoids :	1.66 kg



Elettrovalvola 4 vie 2/3 posizioni.
(Fornitura standard)
Solenoid valve 4 way 2/3 positions.
(Standard supply)

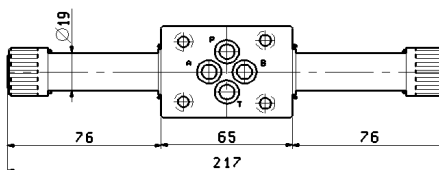


Elettrovalvola 4 vie 2/3 posizioni.
(Fornitura su richiesta)
Solenoid valve 4 way 2/3 positions.
(Supply on request)



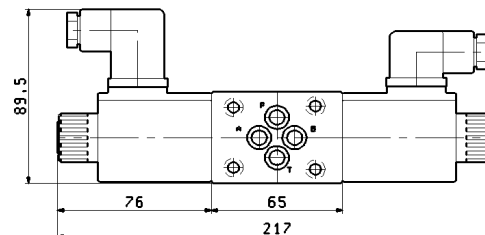
TIPO
TYPE:
LC1MC DZ
LC1MCT DZ

Pesi Weights	
Elettrovalvola con 1 solenoide: With 1 solenoid :	1.33 kg
Elettrovalvola con 2 solenoidi: With 2 solenoids :	1.82 kg



Connettore con raddrizzatore
Connector with rectifier

Connettore standard
Standard connector



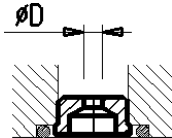
Strozzatore per utilizzi P,T,A,B
Flow restrictor for P,T,A,B ports

Ø D
mm

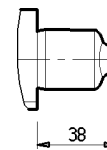
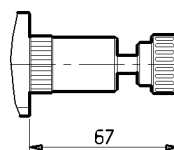
Codice
Designation code

Comando manuale di emergenza a vite
Screwed manual override
EF Cod.: LC1DZ EF

Comando manuale di emergenza a pulsante
Push-button manual override
EP Cod.: 271-05099



0.8	50-0500
1.0	50-0501
1.2	50-0502
1.5	50-0503
2.0	50-0504



MOMENTI MASSIMI DI SERRAGGIO • MAXIMUM BLOCKING TORQUE

Serraggio canotto
Tube mounting

Serraggio ghiera blocco bobina
Retainer nut blocking torque

LC1MC AZ - LC1MCT AZ
ch. 13mm: 22+24Nm
LC1MC DZ - LC1MCT DZ
ch. 16mm: 22+24Nm

5+6Nm

SOLENOIDI • SOLENOIDS

LC1MC AZ - LC1MCT AZ

Le elettrovalvole LC1MC AZ e LC1MCT AZ montano i solenoidi K14 costruiti per alimentazione in corrente alternata, con frequenze di 50 o 60Hz.

Frequenza di inserzione: 4Hz.

Sui solenoidi K14 sono montate le bobine K14-2053... nelle diverse versioni, per ulteriori informazioni tecniche vedere a pagina 2.50.07.

The valves LC1MC AZ e LC1MCT AZ use the solenoids K14 which function in alternate current (AC) with frequencies of 50 and 60Hz.

Switching frequency: 4Hz

The solenoids K14 use K 14-2053... coils in different verions; for more technical information go to page 2.50.07.

LC1MC DZ - LC1MCT DZ

Le elettrovalvole LC1MC DZ - LC1MCT DZ montano i solenoidi GM 5043, costruiti per alimentazione in corrente continua.

Per il funzionamento in corrente alternata, con frequenze di 50 o 60Hz, è indispensabile utilizzare un connettore con raddrizzatore (RAC).

Frequenza di inserzione: 3Hz.

Sui solenoidi GM 5043 sono montate le bobine C45... nelle diverse versioni, per ulteriori informazioni tecniche vedere a pagina 2.50.08.

The valves LC1MC DZ - LC1MCT DZ use the solenoids GM 5043 which function in direct current (DC).

To use in alternate current (AC) with frequencies of 50 and 60Hz is necessary use a connector with rectifier (RAC).

Switching frequency: 3Hz

The solenoids GM 5043 use C45... coils in different verions; for more technical information go to page 2.50.08.

CODICE DI ORDINAZIONE • ORDERING CODE

L 6 1

V	MODELLO <i>MODEL</i>
01	LC1MC DZ <i>LC1MC DZ</i>
02	LC1MC AZ <i>LC1MC AZ</i>
11	LC1MCT DZ <i>LC1MCT DZ</i>
12	LC1MCT AZ <i>LC1MCT AZ</i>

W	CIRCUITO <i>CIRCUIT</i>
----	VEDI PAGINA 2.30.02 <i>SEE PAGE 2.30.02</i>

Y	CONNESSIONE <i>CONNECTION</i>
00	SENZA BOBINA, SENZA CONNETTORE <i>WITHOUT COIL AND CONNECTOR</i>
01	CON BOBINA, SENZA CONNETTORE <i>WITH COIL, WITHOUT CONNECTOR</i>
02	CON CONNETTORE DIN 43650 <i>WITH CONNECTOR DIN 43650</i>
03	AMP JUNIOR <i>AMP JUNIOR</i>

Z	VERSIONE <i>VERSION</i>
00	STANDARD <i>STANDARD</i>
0V	GUARNIZIONI IN VITON <i>SEALS IN VITON</i>

modello <i>model</i>	X	TENSIONE <i>VOLTAGE</i>	Connessioni disponibili <i>Available connections</i>			
			00	01	03	
00		SENZA BOBINA <i>WITHOUT COIL</i>				
LC1M DZ	OB	12V DC	X	X		
	AD	13V DC	X	X	X	
	OC	24V DC	X	X		
	AC	27V DC	X	X	X	
	OD	48V DC	X	X		
	OE	110V DC	X	X		
	OV	24 RAC (21.5 DC)	X	X		
	OW	110 RAC (98 DC)	X	X		
	OZ	230 RAC (207 DC)	X	X		
LC1M AZ	OH	24V AC 50/60Hz	X	X		
	OL	48V AC 50/60Hz	X	X		
	OM	110V AC 50/60Hz	X	X		
	ON	230V AC 50/60Hz	X	X		
	OK	240V AC 50Hz	X	X		