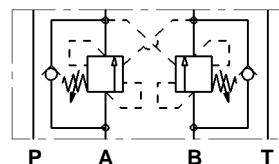




LC1M VBSO

Valvole modulari di bilanciamento
Modular overcentre valves



CARATTERISTICHE TECNICHE

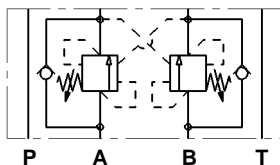
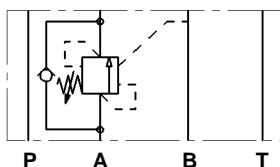
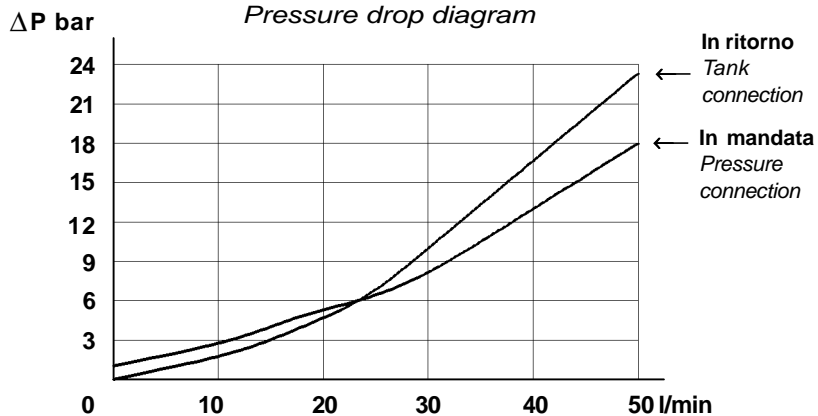
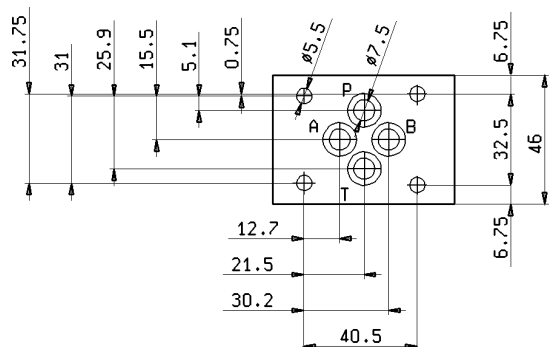
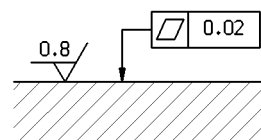
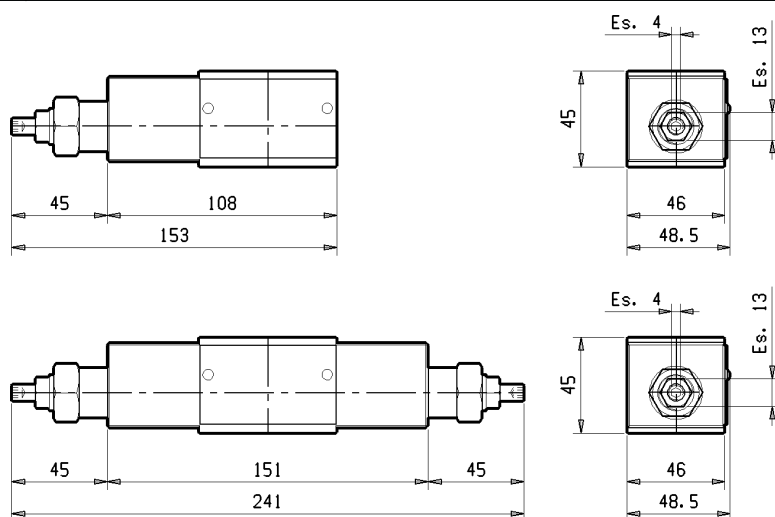
Grandezza: NG6 ISO 4401 - 03 CETOP RP121 H-03 (CETOP 3)

Portata massima: 50 l/min
Pressione massima d'esercizio: 310 bar
Rapporto di pilotaggio: 4,2:1

TECHNICAL CHARACTERISTICS

Size: NG6 ISO 4401 - 03 CETOP RP121 H-03 (CETOP 3)

Max flow: 50 l/min
Max operating pressure: 310 bar
Pilot ratio: 4,2:1

W**TIPI DI VALVOLE • VALVES TYPES****AB****LC1M VBSO/DE****0A****LC1M VBSO/SE****Diagramma caduta di pressione**
Pressure drop diagram**GRANDEZZA • SIZE : NG6 ISO 4401-03 CETOP RP 121 H03 (CETOP 3)****Qualità superficie di attacco**
Mounting plane quality**X****DIMENSIONI DI INGOMBRO • OVER-ALL DIMENSIONS****Peso**
Weight

LC1M VBSO/AB	2.1 kg
LC1M VBSO/A	1.6 kg

Campo di taratura
Pressure range

20	60 ÷ 210 bar
35	100 ÷ 350 bar

CODICE DI ORDINAZIONE • ORDERING CODE**L 6 1 3 6 0 0 W X 0 0 Z**

W	MODELLO <i>MODEL</i>
AB	LC1M-VBSO/AB
0A	LC1M-VBSO/A

X	CAMPO DI TARATURA <i>PRESSURE RANGE</i>
--	VEDI SOPRA <i>SEE ABOVE</i>

Z	VERSIONE <i>VERSION</i>
00	STANDARD <i>STANDARD</i>
0V	GUARNIZIONI IN VITON <i>SEALS IN VITON</i>