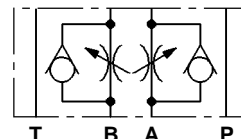




LC1M VF

Valvole modulari di controllo portata

Modular flow regulator valves



CARATTERISTICHE TECNICHE

Grandezza: NG6 ISO 4401 - 03 CETOP RP121 H-03 (CETOP 3)

Portata massima: 50 l/min

Pressione massima d'esercizio: 310 bar

TECHNICAL CHARACTERISTICS

Size: NG6 ISO 4401 - 03 CETOP RP121 H-03 (CETOP 3)

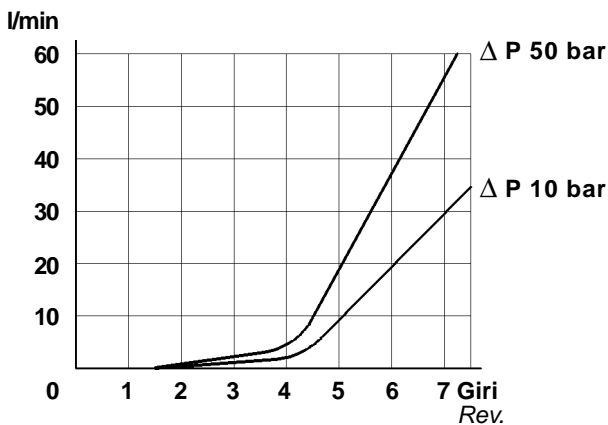
Max flow: 50 l/min

Max operating pressure: 310 bar

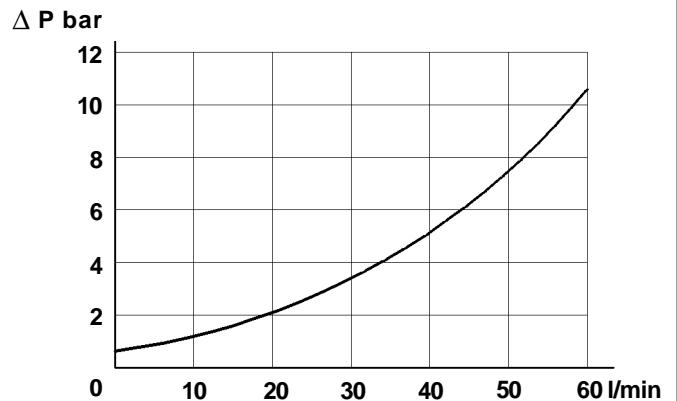
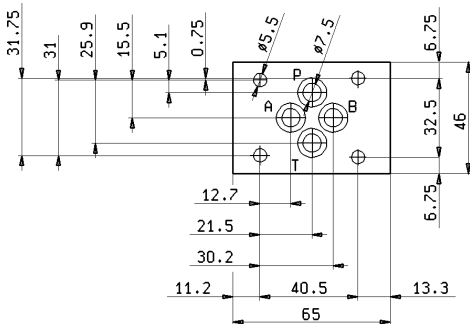
01AB T B A P	010A T B A P	010B T B A P	02AB T B A P	020A T B A P
020B T B A P	0B0A T B A P	0B0B T B A P	0B0P T B A P	<p>V = 01 Regolazione in ritorno <i>Meter-Out flow</i></p> <p>V = 02 Regolazione in mandata <i>Meter-In flow</i></p> <p>V = 0B Bidirezionale <i>Bidirectional</i></p>

CARATTERISTICHE TECNICHE • TECHNICAL FEATURES

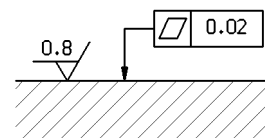
Variazione di portata in funzione dei giri del volantino e della pressione
Pressure drop depending on knob revolutions and on pressure



Caduta di pressione nel senso del flusso libero
Pressure drop in the free flow direction


GRANDEZZA • SIZE : NG6 ISO 4401-03 CETOP RP 121 H03 (CETOP 3)


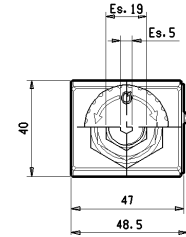
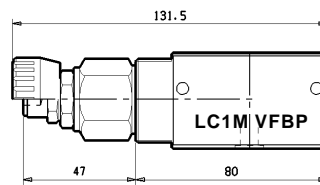
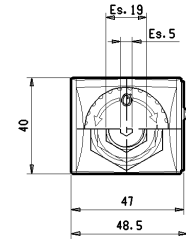
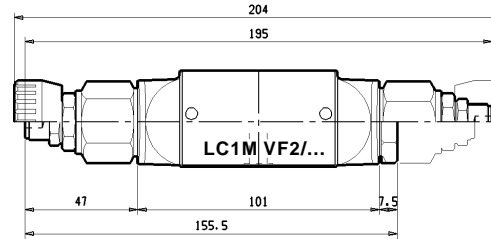
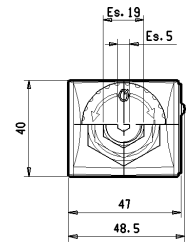
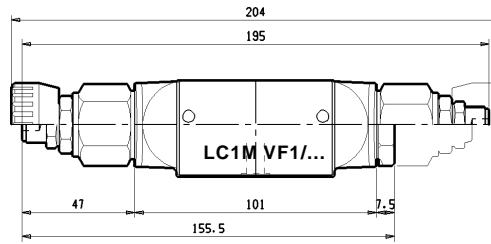
Qualità superficie di attacco
Mounting plane quality



DIMENSIONI DI INGOMBRO • OVER-ALL DIMENSIONS

K = Valvola con regolazione a volantino
Knob adjustment

S = Valvola con regolazione a chiave
Screw adjustment



Peso Weight

LC1M VF1/AB	1,35 kg
LC1M VF2/AB	1,35 kg
LC1M VF1/A-B	1,22 kg
LC1M VF2/A-B	1,22 kg
LC1M VFB/P	1,22 kg



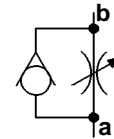
VALVOLA A CARTUCCIA • CARTRIDGE VALVE

S = Valvola con regolazione a chiave
Screw adjustment

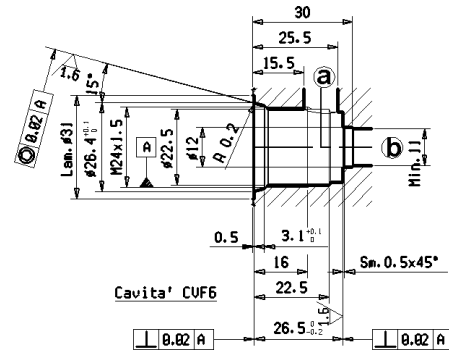
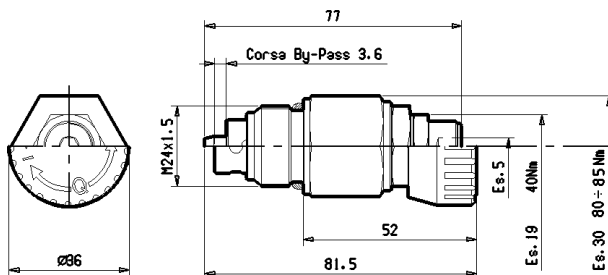
K = Valvola con regolazione a volantino
Knob adjustment

CVF6

Valvola unidirezionale
Uni-directional valve



Valvola bidirezionale
Bi-directional valve



Tipo <i>Type</i>	Regolazione a volantino <i>Knob adjustment</i>	Regolazione a vite <i>Screw adjustment</i>	Portata Max. <i>Max. flow</i>	Diametro nominale di passaggio <i>Ø Size</i>	Numero di giri del volantino <i>Knob revolutions number</i>	Cavità <i>Cavity</i>	Peso <i>Weight</i>
			<i>l/min</i>	<i>mm</i>	<i>n°</i>	<i>n°</i>	<i>kg</i>
CVF6	2K	2S	50	6.5	7,5	14	0,130

CODICE DI ORDINAZIONE • ORDERING CODE

L 6 1 5 1 V W X 0 0 Z

V	MODELLO <i>MODEL</i>
01	MODELLO 01 <i>MODEL 01</i>
02	MODELLO 02 <i>MODEL 02</i>
0B	MODELLO 0B <i>MODEL 0B</i>

W	TIPI DI VALVOLE <i>VALVES TYPE</i>
AB	LC1M-VF_/AB
0A	LC1M-VF_/A
0B	LC1M-VF_/B
0P	LC1M-VF_/P

X	REGOLAZIONE <i>ADJUSTMENT</i>
--	VEDI SOPRA <i>SEE ABOVE</i>

Z	VERSIONE <i>VERSION</i>
00	STANDARD <i>STANDARD</i>
0V	GUARNIZIONI IN VITON <i>SEALS IN VITON</i>