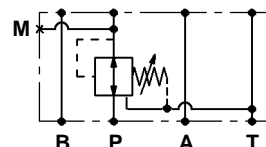




LC1M VRPM

Valvole modulari riduttrici di pressione

Modular pressure reducing valves



CARATTERISTICHE TECNICHE

Grandezza: NG6 ISO 4401 - 03 CETOP RP121 H-03 (CETOP 3)

Portata massima: 50 l/min

Pressione massima in entrata: 310 bar

Pressione controllata in uscita: 5 ÷ 280 bar

Valvole riduttrici di pressione dirette e pilotate agenti su P e A

TECHNICAL CHARACTERISTICS

Size: NG6 ISO 4401 - 03 CETOP RP121 H-03 (CETOP 3)

Max flow: 50 l/min

Inlet max pressure: 310 bar

Controlled pressure at outlet port: 5 to 280 bar

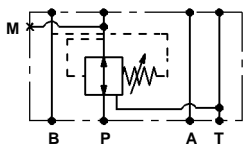
Pilot and direct operated pressure reducing valves acting on P and A



TIPI DI VALVOLE • VALVES TYPES

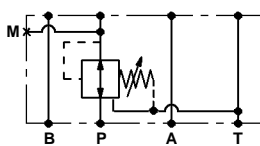
IA

Riduttrice in A con relieving, drenaggio in B
Pressure reducing in A with relieving, draining in B

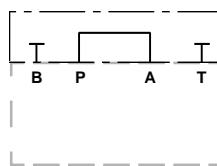


IP

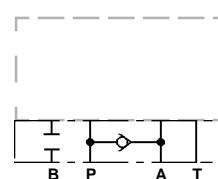
Riduttrice in P con relieving, drenaggio in T
Pressure reducing in P with relieving, draining in T



LC1PR1



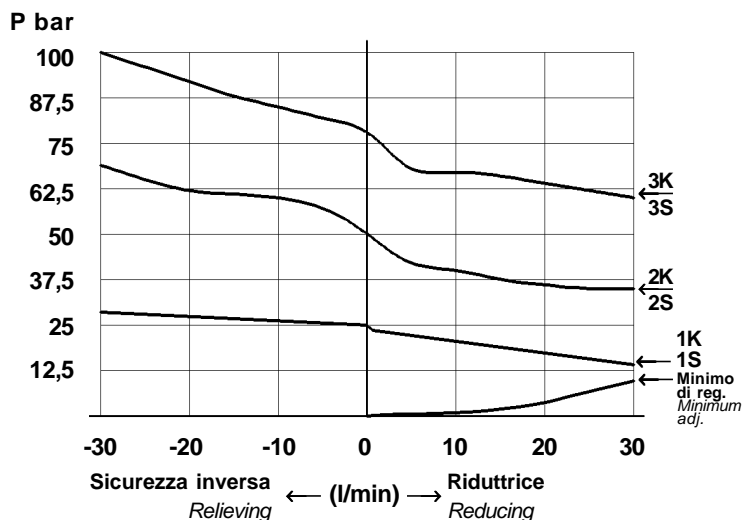
LC1PR2



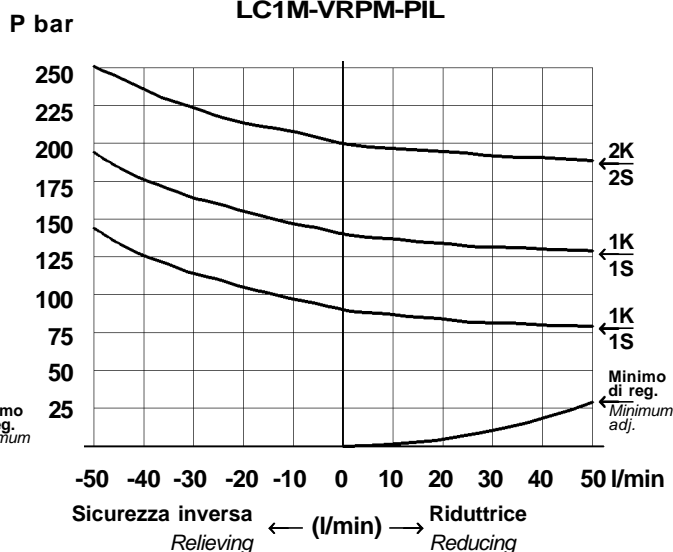
CARATTERISTICHE TECNICHE • TECHNICAL FEATURES

Curve di apertura Opening curves

LC1M-VRPM-DIR

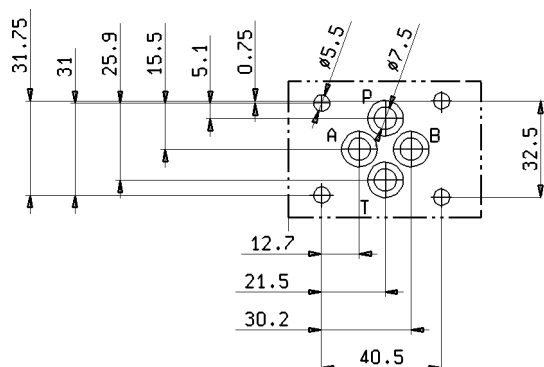


LC1M-VRPM-PIL

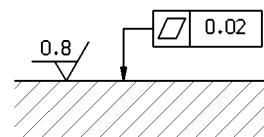


| Tipo Type | Regolazione a volantino Knob adjustment | Regolazione a vite Screw adjustment | Trafilamento interno Internal leakage cm ³ /min | Portata Max. Max. flow l/min | Pressione Max. Max. pressure bar | Campo di taratura Regulation range bar | Cavità Cavity n° |
|--------------|--|--|--|------------------------------------|--|--|------------------------|
| 01 (DIR) | 1K | 1S | 50±10 | 30 | 310 | 2÷25 | CA-10A-3N |
| | 2K | 2S | | | | 10÷50 | |
| | 3K | 3S | | | | 28÷80 | |
| 02 (PIL) | 1K | 1S | 250±50 | 50 | 310 | 35÷140 | |
| | 2K | 2S | | | | 70÷280 | |

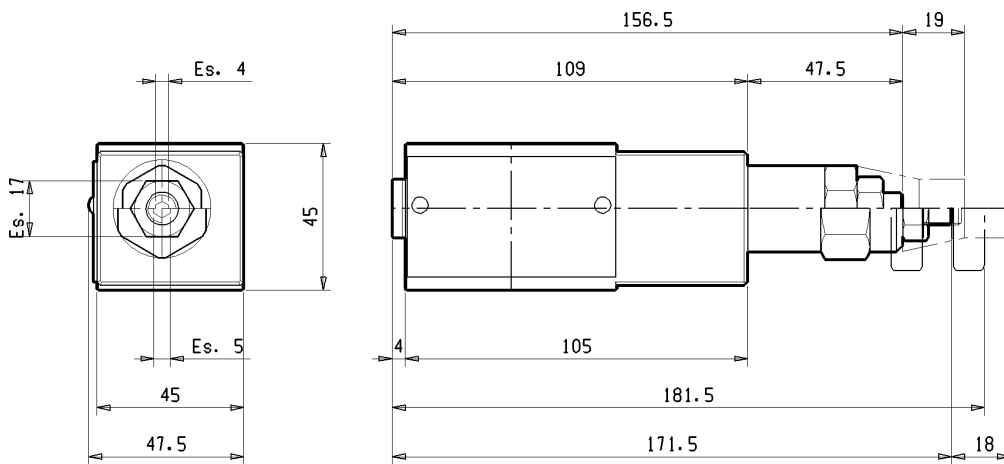
GRANDEZZA • SIZE : NG6 ISO 4401-03 CETOP RP 121 H03 (CETOP 3)



Qualità superficie di attacco Mounting plane quality



DIMENSIONI DI INGOMBRO • OVER-ALL DIMENSIONS



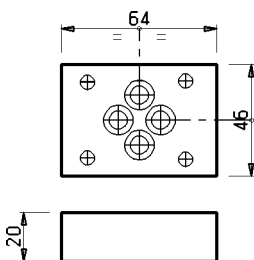
S = Valvola con taratura a chiave
Screw adjustment

K = Valvola con taratura a volantino
Knob adjustment

| Pesi Weights | |
|-----------------|---------|
| LC1M-VRPM-DIR | 1,50 kg |
| LC1M-VRPM-PIL | 1,40 kg |

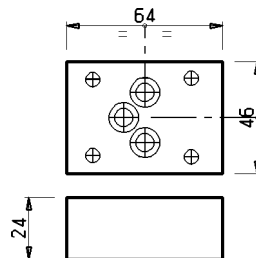
LC1PR1
Piastra di collegamento
Connection plate

P → A



LC1PR2
Piastra con ritegno da
Plate with check valve from

A → P



| Pesi Weights | |
|-----------------|---------|
| LC11PR1 | 0,38 kg |
| LC11PR2 | 0,45 kg |

CARATTERISTICHE DI FUNZIONAMENTO • SPECIFICATIONS

Le valvole LC1M-VRPM, sono valvole riduttrici di pressione a tre vie con relieving da impiegare quando in un circuito si vuole ottenere una riduzione costante di pressione su uno o più utilizzi.

Eventuali aumenti di pressione sull'entrata "P" non hanno influenza sulla pressione ridotta.

Sono disponibili in due versioni con drenaggio interno:

LC1M-VRPM-...-IA pressione ridotta in A con drenaggio in B.

LC1M-VRPM-...-IP pressione ridotta in P con drenaggio in T.

Le valvole montano due tipi di cartucce con funzionamento diretto o pilotato, con diversi campi di regolazione:

tipo LC1M-VRPM-01 monta la cartuccia ad azione diretta VRPR-10A;

tipo LC1M-VRPM-02 monta la cartuccia ad azione pilotata VRPX-10A.

LC1M-VRPM valves are 3-ways pressure reducing valves with relieving to be applied in a circuit to get a constant pressure reduction on one or more ports.

Eventual pressure increases on "P" don't have any influence on the reduced pressure.

2 versions with internal drain are available:

LC1M-VRPM-...-IA reduced pressure in A with drain in B.

LC1M-VRPM-...-IP reduced pressure in P with drain in T.

The valves can be fitted with 2 different models of cartridges with direct operation or pilot operation with different regulation ranges:

type VRPR-10A direct operated

CODICE DI ORDINAZIONE • ORDERING CODE

L 6 1 6 3 V W X 0 0 Z

| | |
|----------|---|
| X | REGOLAZIONE ADJUSTMENT |
| -- | VEDI PAGINA 2.180.02 SEE PAGE 2.180.02 |

| | |
|-----------|--------------------------|
| V | MODELLO MODEL |
| 01 | LC1M-VRPM-DIR |
| 02 | LC1M-VRPM-PIL |

| | |
|-----------|-----------------------------|
| W | CIRCUITO CIRCUIT |
| IA | LC1M-VRPM-...-IA |
| IP | LC1M-VRPM-...-IP |

| | |
|-----------|--|
| Z | VERSIONE VERSION |
| 00 | STANDARD STANDARD |
| 0V | GUARNIZIONI IN VITON SEALS IN VITON |