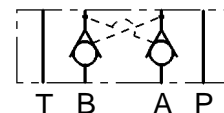




LC1M VR

Valvole modulari di ritegno semplici e pilotate

Modular direct and pilot operated check valves



CARATTERISTICHE TECNICHE

Grandezza: NG6 ISO 4401 - 03 CETOP RP121 H-03 (CETOP 3)

Portata massima: 60 l/min

Pressione massima d'esercizio: 310 bar

Rapporto di pilotaggio: 4:1

TECHNICAL CHARACTERISTICS

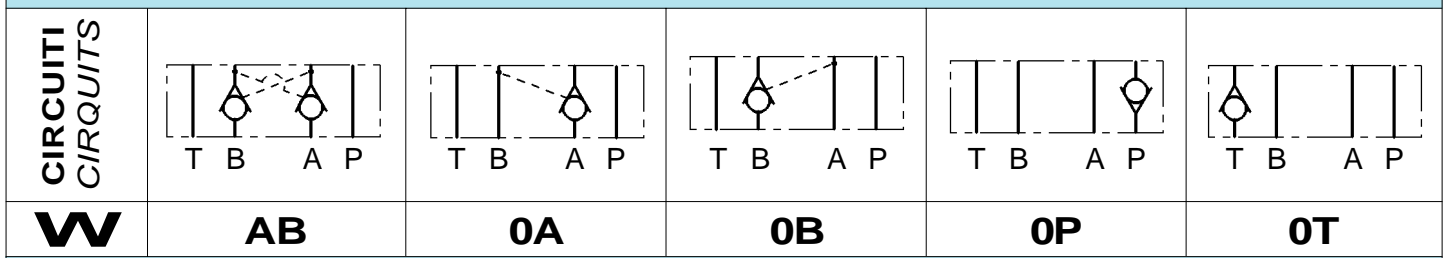
Size: NG6 ISO 4401 - 03 CETOP RP121 H-03 (CETOP 3)

Max flow: 60 l/min

Max operating pressure: 310 bar

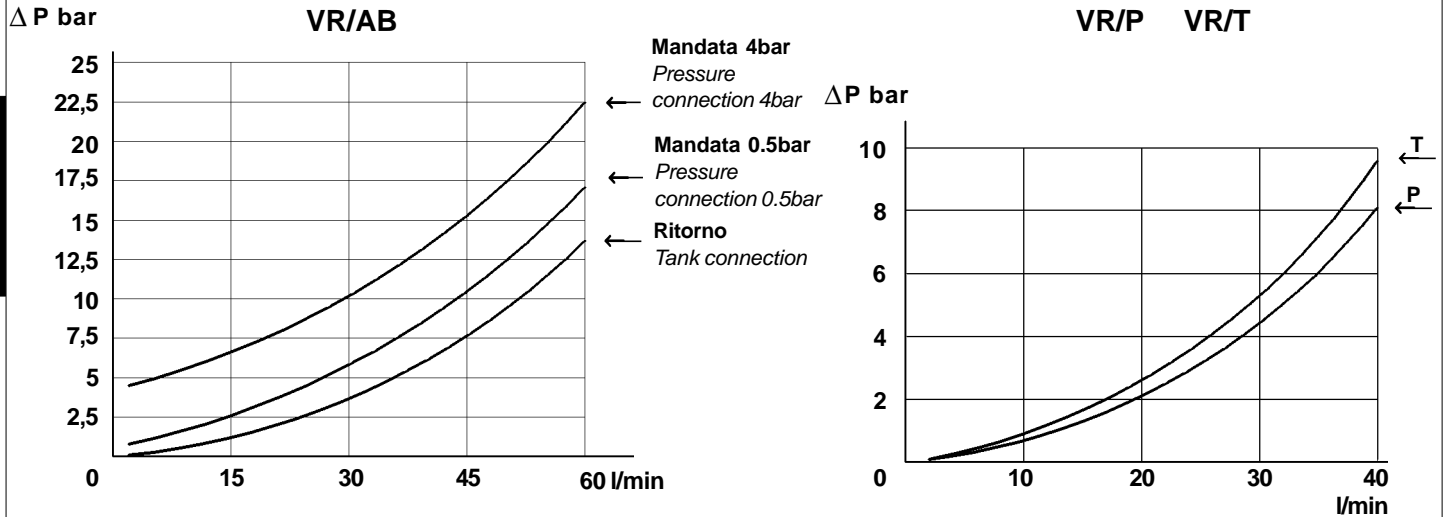
Pilot ratio: 4:1

TIPI DI VALVOLE • VALVES TYPES

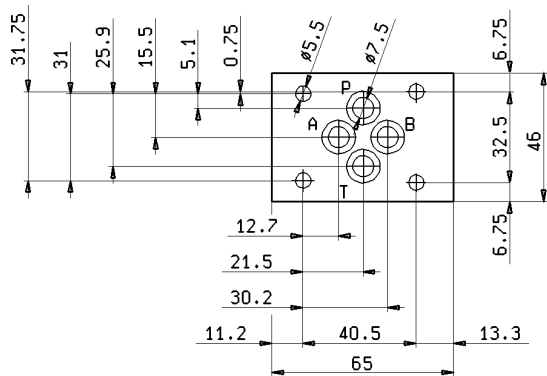


CARATTERISTICHE TECNICHE • TECHNICAL FEATURES

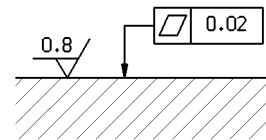
Cadute di pressione
Pressure drop diagrams



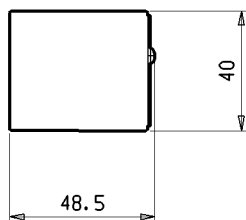
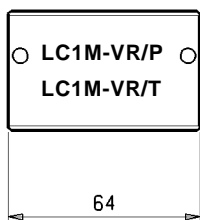
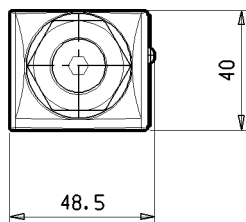
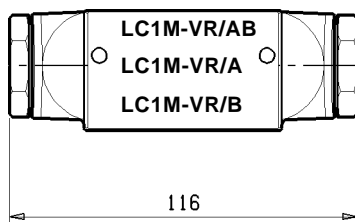
GRANDEZZA • SIZE : NG6 ISO 4401-03 CETOP RP 121 H03 (CETOP 3)



Qualità superficie di attacco
Mounting plane quality

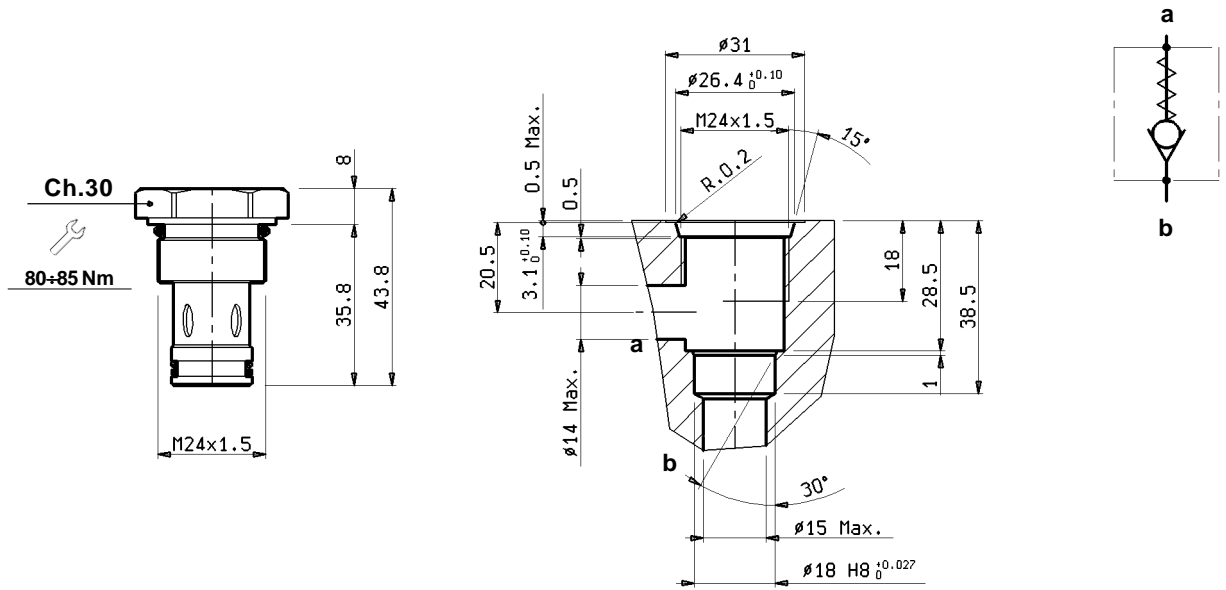


DIMENSIONI DI INGOMBRO • OVER-ALL DIMENSIONS



| Peso Weight | |
|----------------|---------|
| LC1M-VR/AB | 1.07 kg |
| LC1M-VR/A | 1.06 kg |
| LC1M-VR/B | 1.06 kg |
| LC1M-VR/P | 0.75 kg |
| LC1M-VR/T | 0.75 kg |

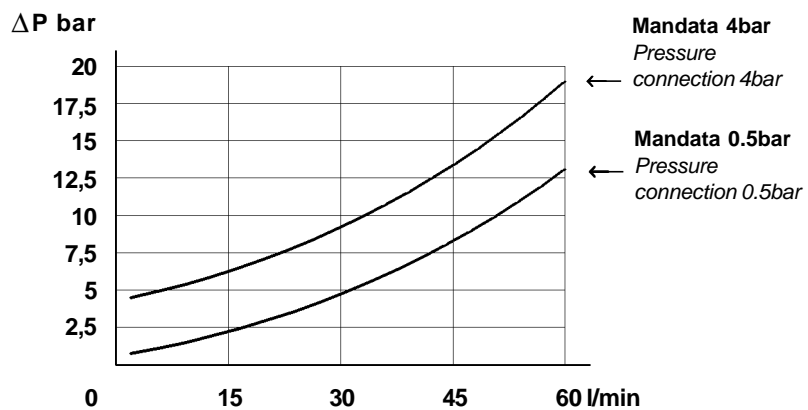
VALVOLA UNIDIREZIONALE A CARTUCCIA • UNI-DIRECTIONAL CARTRIDGE VALVE



| Tipo <i>Type</i> | Diam. nominale di passaggio <i>Ø Size</i> mm | Portata Max. <i>Max. flow</i> l/min | Pressione Max. <i>Max. pressure</i> bar | Pressione di apertura <i>Cracking pressure</i> bar | Cavità <i>Cavity</i> n° | Peso <i>Weight</i> kg |
|---------------------|--|---|---|--|-------------------------------|-----------------------------|
| VU 6 | 8 | 60 | 350 | 0,5 | 15 | 0,110 |
| VU 6/4 | 8 | 60 | 350 | 4 | 15 | 0,110 |

CARATTERISTICHE TECNICHE • TECHNICAL FEATURES

Diagramma caduta di pressione della cartuccia
Cartridge pressure drop diagram



CODICE DI ORDINAZIONE • ORDERING CODE

L 6 1 4 1 0 0 W X 0 0 Z

| W | TIPI DI VALVOLE VALVES TYPE |
|-----------|--|
| AB | LC1M-VR/AB |
| 0A | LC1M-VR/A |
| 0B | LC1M-VR/B |
| 0P | LC1M-VR/P |
| 0T | LC1M-VR/T |

| X | PRESSIONE DI APERTURA CRACK PRESSURE |
|--|---|
| 01 | 0,5 bar 0,5 bar |
| 04* | 4 bar 4 bar |
| * Solo per versioni 0A, 0B, AB Only for 0A, 0B, AB versions | |

| Z | VERSIONE VERSION |
|-----------|--|
| 00 | STANDARD STANDARD |
| 0V | GUARNIZIONI IN VITON SEALS IN VITON |