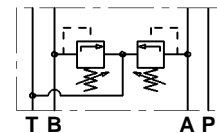




LC2M VM

Valvole modulari limitatrici di pressione ad azione diretta
Modular direct acting adjustable pressure relief valves



CARATTERISTICHE TECNICHE

Grandezza: NG10 ISO4401-05 CETOP RP121 H-05 (CETOP 5)

Portata massima: 80 l/min

Pressione massima d'esercizio: 310 bar

TECHNICAL CHARACTERISTICS

Size: NG10 ISO4401-05 CETOP RP121 H-05 (CETOP 5)

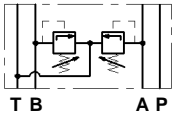
Max flow: 80 l/min

Max operating pressure: 310 bar

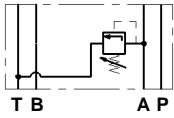


TIPI DI VALVOLE • VALVES TYPES

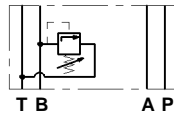
01 AB



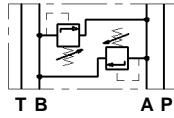
01 0A



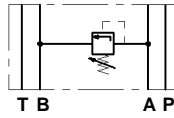
01 0B



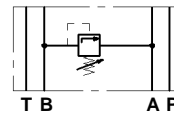
02 AB



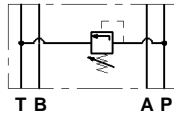
02 0A



02 0B

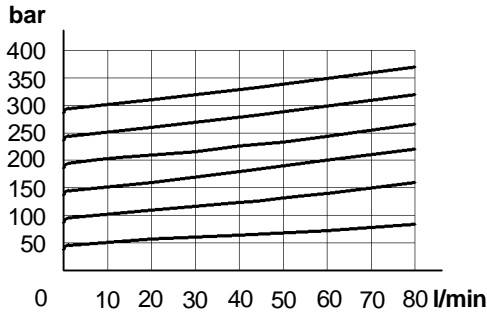


01 0P

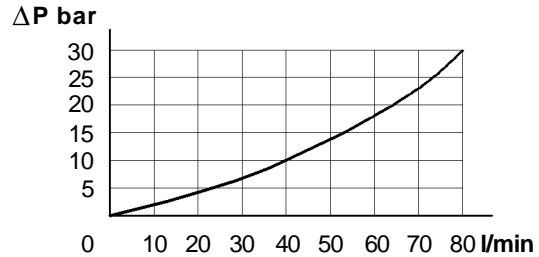


CARATTERISTICHE TECNICHE • TECHNICAL FEATURES

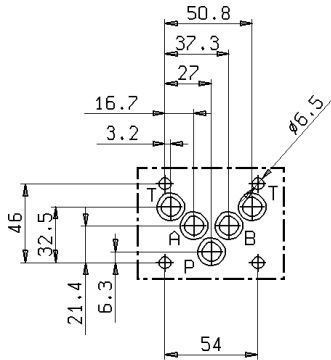
Curve di apertura
Opening curves



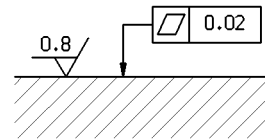
Valore minimo di taratura
Min adjustable setting



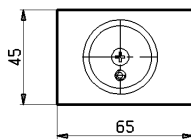
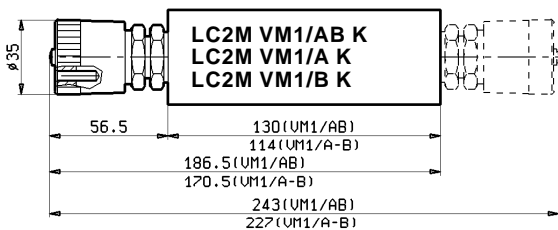
GRANDEZZA • SIZE : NG10 ISO 4401-05 CETOP RP 121H- 05 (CETOP 5)



Qualità superficie di attacco
Mounting plane quality

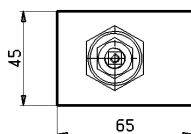
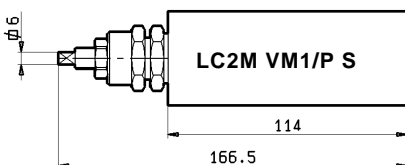
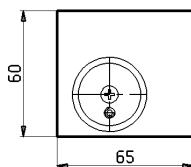
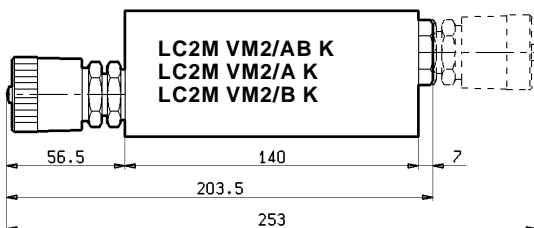


DIMENSIONI DI INGOMBRO • OVER-ALL DIMENSIONS



K = Valvola con taratura a volantino
Knob adjustment

S = Valvola con taratura a chiave
Screw adjustment



Peso
Weight

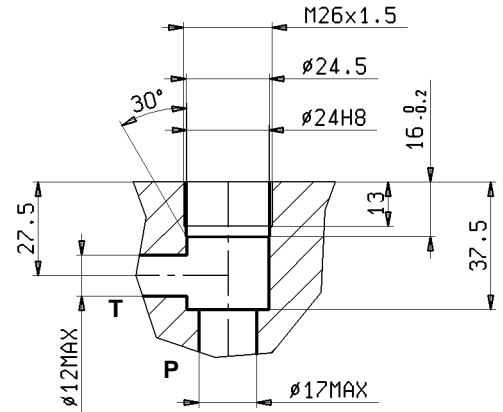
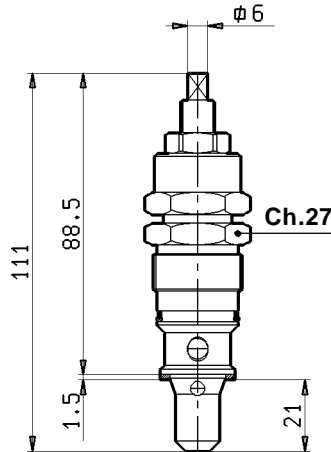
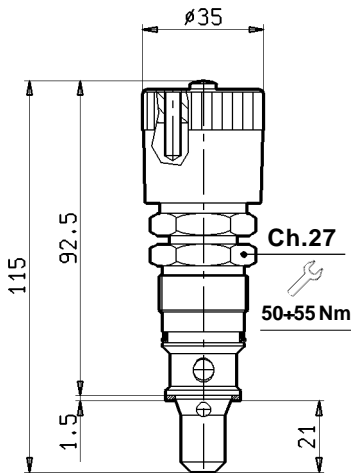
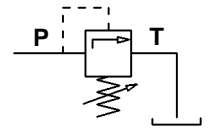
LC2M VM1/AB	2.64 kg
LC2M VM1/A	2.10 kg
LC2M VM1/B	2.10 kg
LC2M VM2/AB	3.49 kg
LC2M VM2/A	3.40 kg
LC2M VM2/B	3.40 kg
LC2M VM1/P	2.20 kg



VALVOLA LIMITATRICE DI PRESSIONE A CARTUCCIA • RELIEF VALVE CARTRIDGE

Tipo **K** = Valvola con taratura a volantino
 Type **K** = Knob adjustment

Tipo **S** = Valvola con taratura a chiave
 Type **S** = Screw adjustment



Tipo Type	X		Portata Max. Max. flow l/min	Pressione Max. Max. pressure bar	Campo di taratura Pressure range bar	Cavità Cavity n°	Peso Weight kg
	Regolazione a volantino Knob adjustment	Regolazione a vite Screw adjustment					
VM 10	KL	SL	80	310	0-60	13	0,23
	KN	SN			10-140		
	KB	SB			20-200		
	KV	SV			50-310		
	00		Senza valvola limitatrice - Without pressure relief valve				

CODICE DI ORDINAZIONE • ORDERING CODE

L 6 2 6 0 **V** **W** **X** **0 0** **Z**

V	MODELLO MODEL
01	MODELLO 01 (scarico in T) MODEL 01 (T outlet)
02	MODELLO 02 (scarico incrociato) MODEL 02 (cross-over outlet)

W	TIPI DI VALVOLE VALVES TYPE
AB	LC2M-VM_/AB
0A	LC2M-VM_/A
0B	LC2M-VM_/B
0P	LC2M-VM_/P

X	CAMPO DI TARATURA PRESSURE RANGE
--	VEDI SOPRA SEE ABOVE

Z	VERSIONE VERSION
00	STANDARD STANDARD
0V	GUARNIZIONI IN VITON SEALS IN VITON